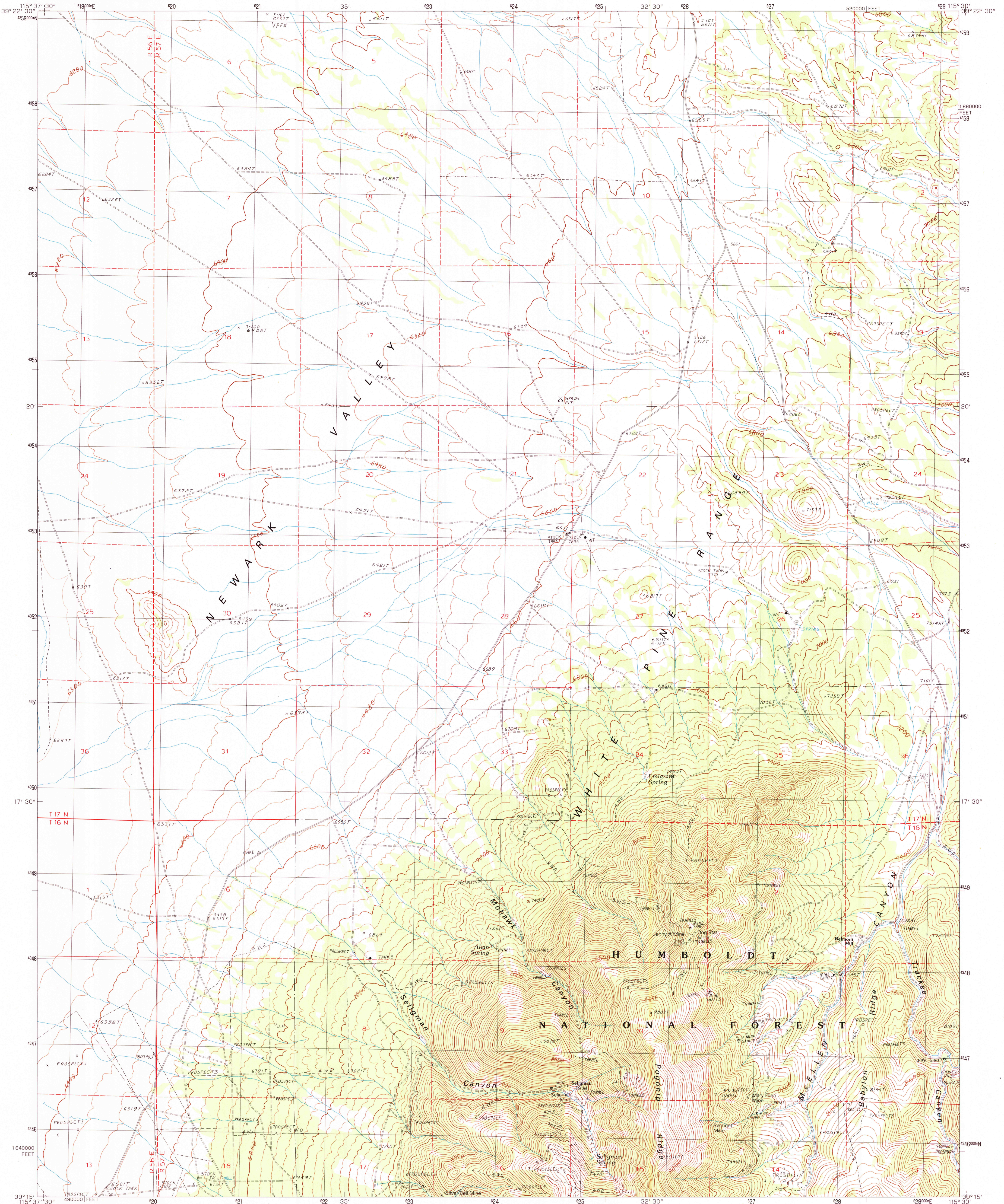


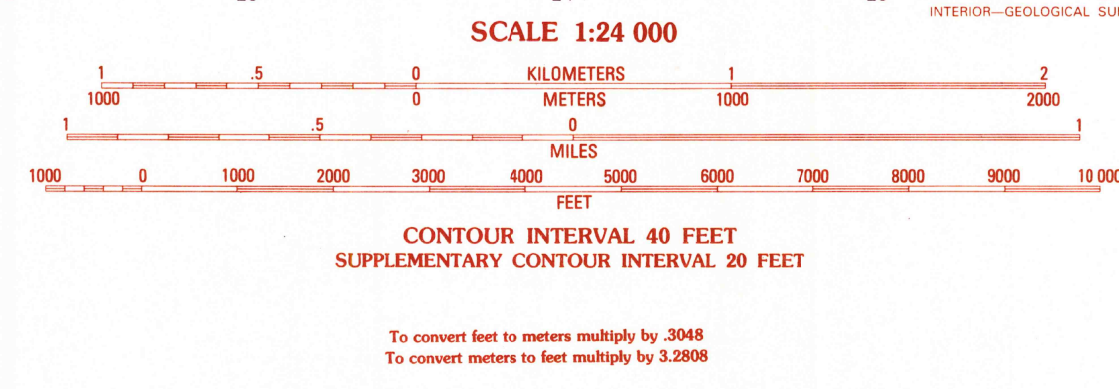
UNITED STATES
DEPARTMENT OF THE INTERIOR
GEOLOGICAL SURVEY

SELIGMAN CANYON QUADRANGLE
NEVADA-WHITE PINE CO.
7.5 MINUTE SERIES (TOPOGRAPHIC)



PRODUCED BY THE UNITED STATES GEOLOGICAL SURVEY
CONTROL BY: USGS AND NOS/NOAA
COMPILED FROM AERIAL PHOTOGRAPHS TAKEN: 1984-85
FIELD CHECKED: 1987
MAP EDITED: 1990
PROJECTION: TRANSVERSE MERCATOR
GRID: 1000-METER UNIVERSAL TRANSVERSE MERCATOR
ZONE 11
10,000-FOOT STATE GRID TICS
NEVADA, EAST ZONE
UTM GRID DECLINATION: 0° 55' EAST
1990 MAGNETIC NORTH DECLINATION: 15° 00' EAST
VERTICAL DATUM: NATIONAL GEODETIC VERTICAL DATUM OF 1929
HORIZONTAL DATUM: 1927 NORTH AMERICAN DATUM
To place on the predicted North American Datum of 1983,
move the projection lines as shown by dashed corner ticks
(11 meters north and 75 meters east)
There may be private inholdings within the boundaries of any
Federal or State reservations shown on this map

PROVISIONAL MAP
Produced from original
manuscript drawings. Infor-
mation shown as of date of
field check.



ROAD LEGEND

Improved Road
Unimproved Road
Trail

Interstate Route
U. S. Route
State Route

QUADRANGLE LOCATION

ADJOINING 7.5 QUADRANGLE NAMES

1	2	3	1 Pancake Summit
4	5	6	2 East of Pancake Summit
7	8	9	3 Antelope Mountain
10	11	12	4 Pancake Summit SW
13	14	15	5 Hamilton
16	17	18	6 Green Springs NW
19	20	21	7 Mt. Hamilton
22	23	24	8 Treasure Hill

SELIGMAN CANYON, NEVADA
PROVISIONAL EDITION 1990

39115-C5-TF-024

USGS NMN HISTORICAL MAP
JUN 28 1990
REC'D FILE COPY