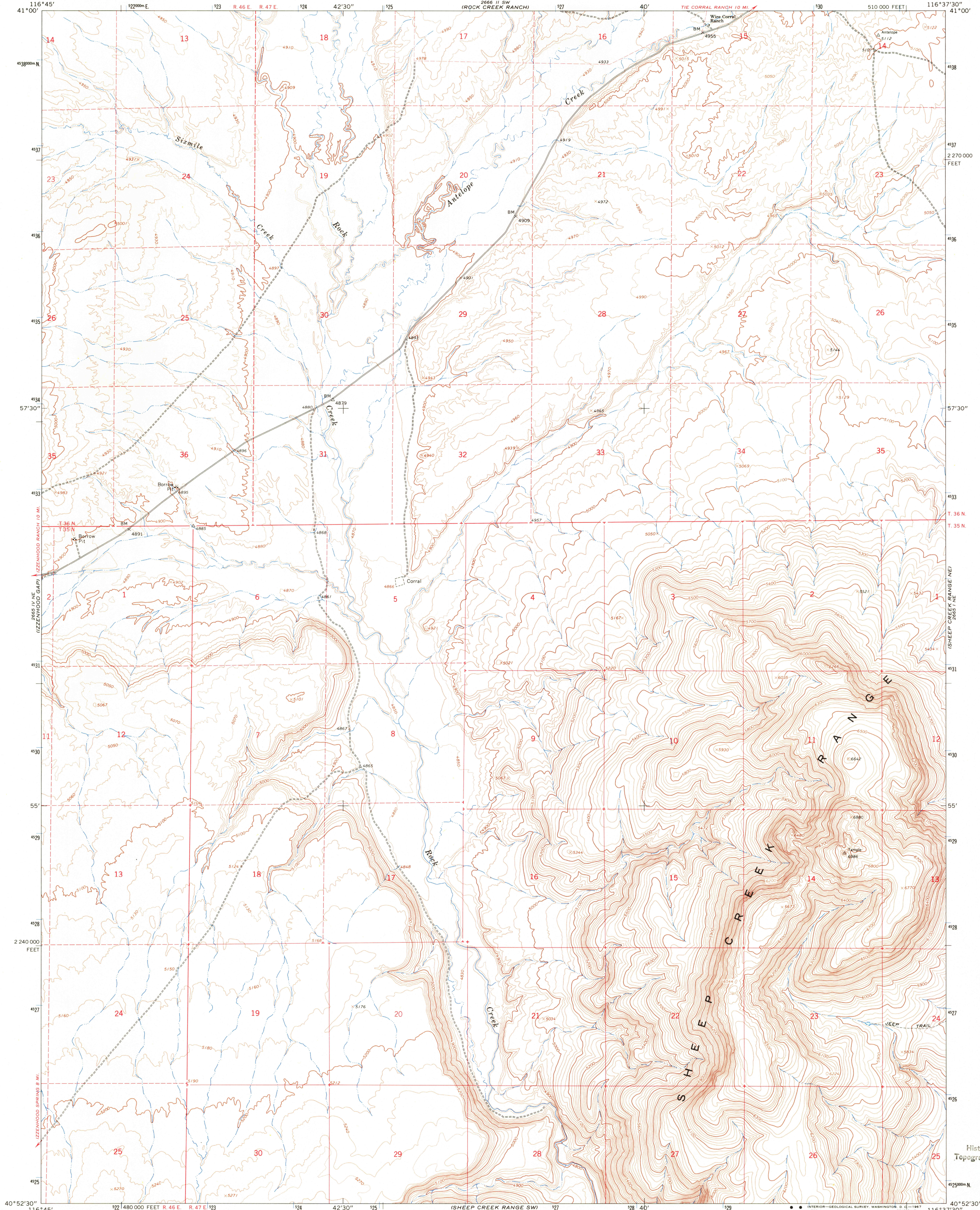


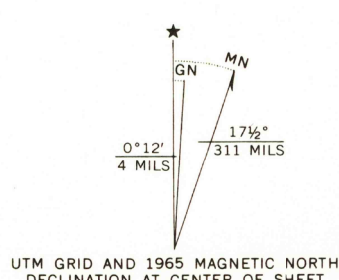
UNITED STATES
DEPARTMENT OF THE INTERIOR
GEOLOGICAL SURVEY

SHEEP CREEK RANGE NW QUADRANGLE
NEVADA—LANDER CO.
7.5 MINUTE SERIES (TOPOGRAPHIC)

WILLOW CREEK
RESERVOIR (S)



Mapped, edited, and published by the Geological Survey
Control by USGS and USC&GS
Topography by photogrammetric methods from aerial
photographs taken 1963. Field checked 1965
Polyconic projection. 1927 North American datum
10,000-foot grid based on Nevada coordinate system,
central zone
1000-meter Universal Transverse Mercator grid ticks,
zone 11, shown in blue
Fine red dashed lines indicate selected fence lines



SCALE 1:24,000
CONTOUR INTERVAL 20 FEET
DOTTED LINES REPRESENT 10-FOOT CONTOURS
DATUM IS MEAN SEA LEVEL
THIS MAP COMPLIES WITH NATIONAL MAP ACCURACY STANDARDS
FOR SALE BY U.S. GEOLOGICAL SURVEY, DENVER, COLORADO 80225, OR WASHINGTON, D. C. 20242
A FOLDER DESCRIBING TOPOGRAPHIC MAPS AND SYMBOLS IS AVAILABLE ON REQUEST

U.S.G.S.
FILE
TOPOGRAPHIC DIVISION

ROAD CLASSIFICATION
Light-duty ————— Unimproved dirt —————

SHEEP CREEK RANGE NW, NEV.
N4052.5—W11637.5/7.5

1965

AMS 2665 I NW—SERIES V896

2760
JAN 10 1968