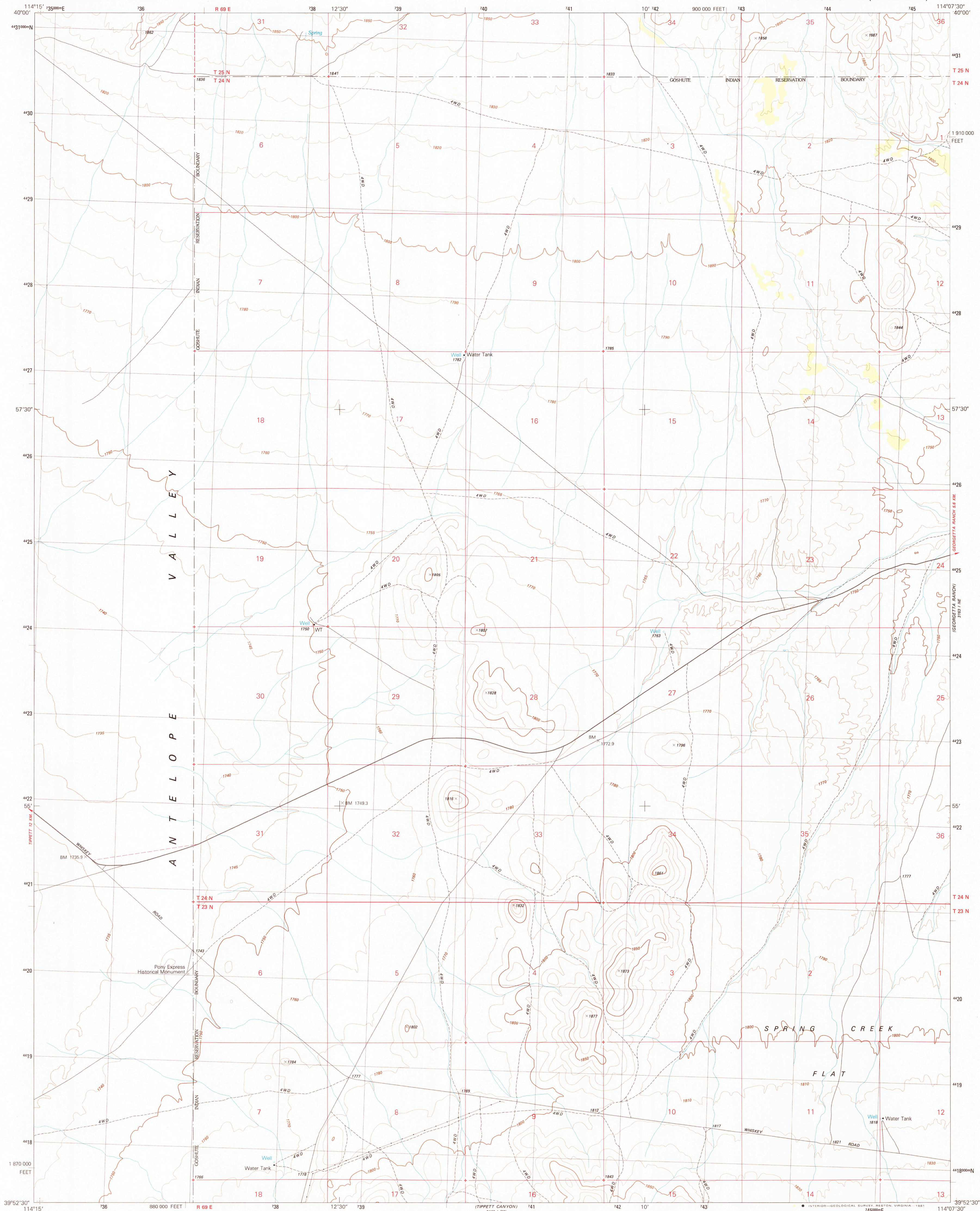


UNITED STATES
DEPARTMENT OF THE INTERIOR
GEOLOGICAL SURVEY

SPRING CREEK FLAT NW QUADRANGLE
NEVADA-WHITE PINE CO.
7.5 MINUTE SERIES (TOPOGRAPHIC)



Produced by the United States Geological Survey

Control by USGS and NOS/NOAA

Compiled by photogrammetric methods from aerial photographs taken 1977. Field checked 1978
Map edited 1981

Projection and 1000-meter grid, zone 11.

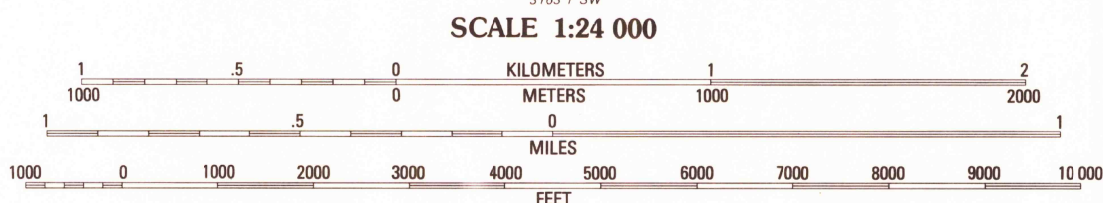
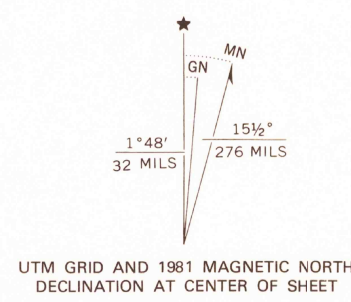
Universal Transverse Mercator

10,000-foot grid ticks based on Nevada coordinate system, east zone. 1927 North American Datum

To place on the predicted North American Datum 1983 move the projection lines 10 meters north and 72 meters east as shown by dashed corner ticks

Where omitted, land lines have not been established

There may be private inholdings within the boundaries of the National or State reservations shown on this map



CONTOUR INTERVAL 10 METERS
SUPPLEMENTARY CONTOUR INTERVAL 5 METERS
NATIONAL GEODETIC VERTICAL DATUM OF 1929

THIS MAP COMPLIES WITH NATIONAL MAP ACCURACY STANDARDS
FOR SALE BY U. S. GEOLOGICAL SURVEY, DENVER, COLORADO 80225, OR RESTON, VIRGINIA 22092
A FOLDER DESCRIBING TOPOGRAPHIC MAPS AND SYMBOLS IS AVAILABLE ON REQUEST



QUADRANGLE LOCATION
CONTOURS AND ELEVATIONS
IN METERS

ROAD CLASSIFICATION
Primary highway, hard surface
Secondary highway, hard surface
Light-duty road, hard or improved surface
Unimproved road
Interstate Route U. S. Route State Route

SPRING CREEK FLAT NW, NEV.
N3952.5-W11407.5/7.5

1981

DMA 3163 1 NW-SERIES V896

RETURN TO:
USGS AND HISTORICAL MAP ARCHIVE
200