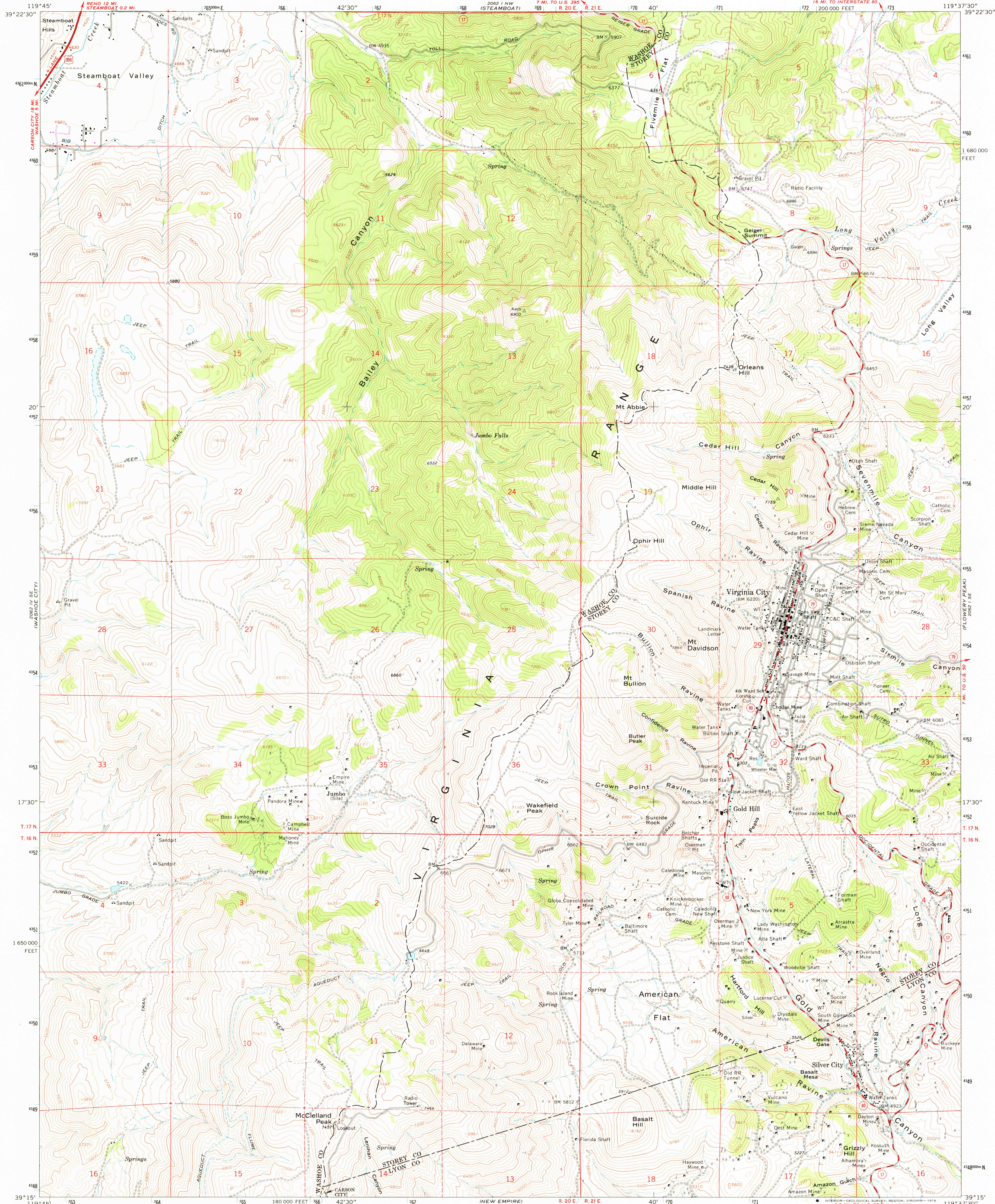


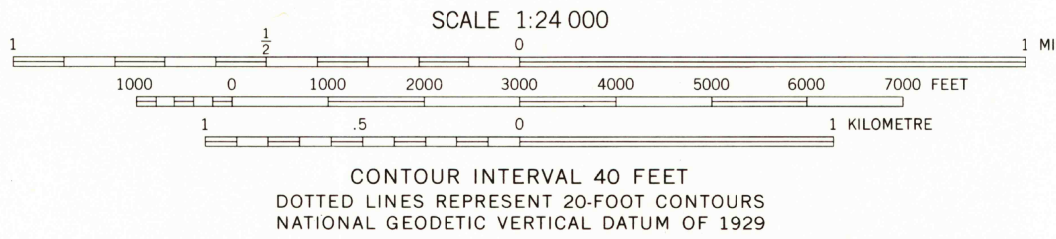
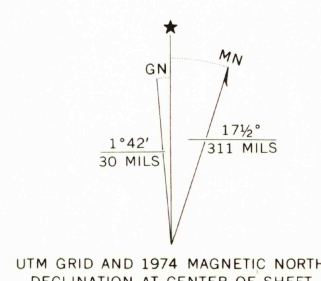
UNITED STATES  
DEPARTMENT OF THE INTERIOR  
GEOLOGICAL SURVEY

VIRGINIA CITY QUADRANGLE  
NEVADA  
7.5 MINUTE SERIES (TOPOGRAPHIC)  
SW 1/4 VIRGINIA CITY 15' QUADRANGLE



Mapped, edited, and published by the Geological Survey  
Control by USGS and NOS/NOAA  
Topography by photogrammetric methods from aerial  
photographs taken 1966. Field checked 1967  
Polyconic projection. 1927 North American datum  
10,000-foot grid based on Nevada coordinate system, west zone  
1000-metre Universal Transverse Mercator grid ticks,  
zone 11, shown in blue

Revisions shown in purple compiled from aerial photographs  
taken 1974. This information not field checked



THIS MAP COMPLIES WITH NATIONAL MAP ACCURACY STANDARDS  
FOR SALE BY U.S. GEOLOGICAL SURVEY, DENVER, COLORADO 80225, OR RESTON, VIRGINIA 22092  
A FOLDER DESCRIBING TOPOGRAPHIC MAPS AND SYMBOLS IS AVAILABLE ON REQUEST



ROAD CLASSIFICATION  
Heavy-duty ——— Light-duty ———  
Medium-duty ——— Unimproved dirt ———  
U.S. Route ——— State Route ———

USGS  
Historical File  
Topographic Division

VIRGINIA CITY, NEV.  
SW 1/4 VIRGINIA CITY 15' QUADRANGLE  
N3915—W11937.5/7.5

1967  
PHOTOREVISED 1974  
AMS 2062 I SW—SERIES V896

MAY 3 1976