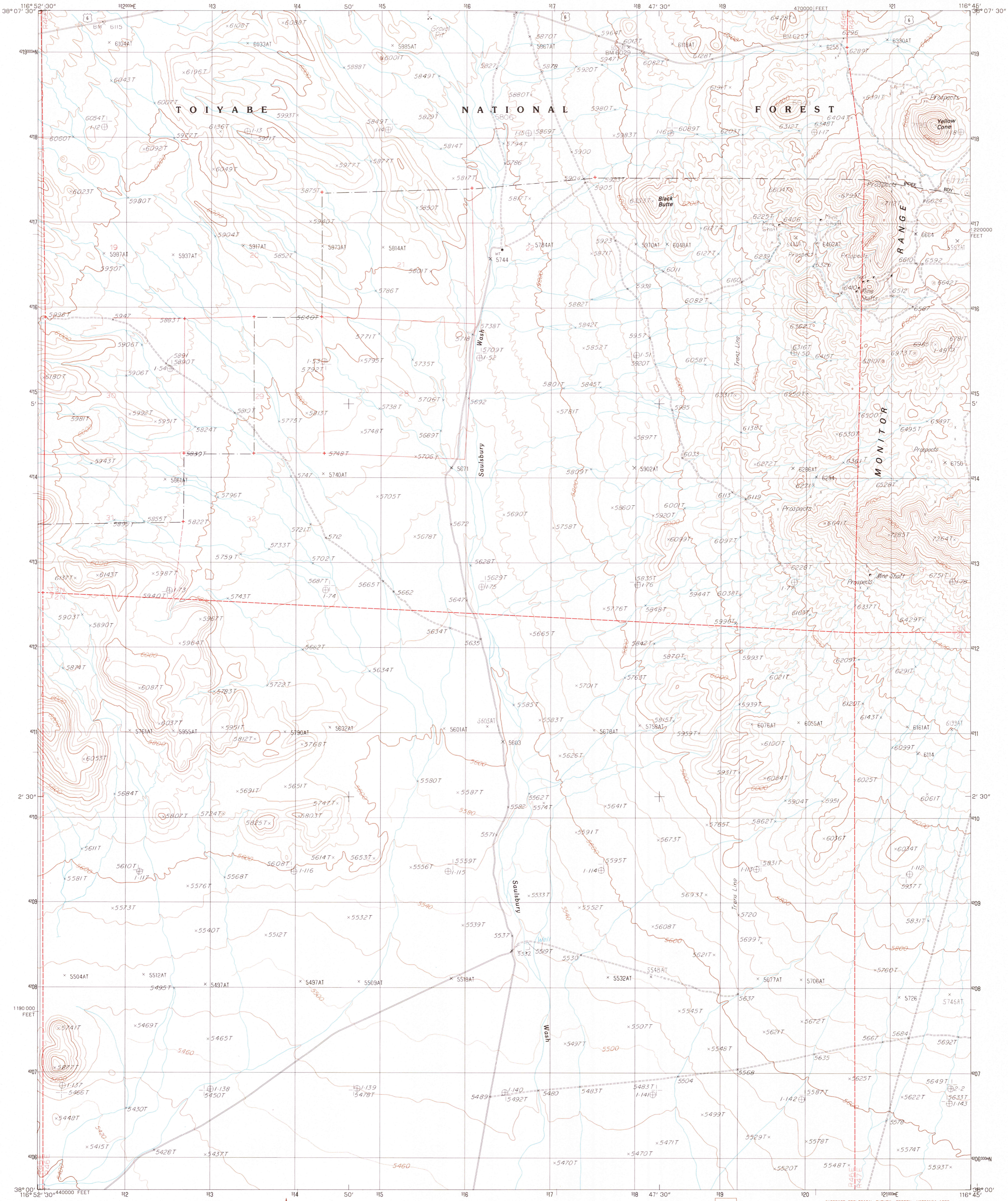


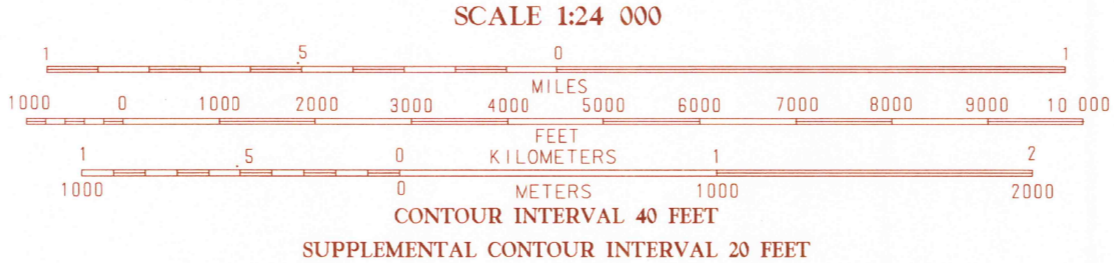
UNITED STATES
DEPARTMENT OF THE INTERIOR
GEOLOGICAL SURVEY

YELLOW CONE QUADRANGLE
NEVADA - NYE CO.
7.5 MINUTE SERIES (TOPOGRAPHIC)



PRODUCED BY THE UNITED STATES GEOLOGICAL SURVEY
CONTROL BY USGS, NOS/NOAA
COMPILED FROM AERIAL PHOTOGRAPHS TAKEN 1980
FIELD CHECKED 1982 MAP EDITED 1986
PROJECTION TRANSVERSE MERCATOR
GRID METER UNIVERSAL TRANSVERSE MERCATOR ZONE II
6000-FOOT STATE GRID TICS NEVADA CENTRAL ZONE
UTM GRID DECLINATION 0°07' EAST
1986 MAGNETIC NORTH DECLINATION 15° EAST
VERTICAL DATUM NATIONAL GEODETIC VERTICAL DATUM OF 1929
HORIZONTAL DATUM 1927 NORTH AMERICAN DATUM
To place on the predicted North American Datum of 1983,
move the projection lines as shown by dashed corner ticks
(10 meters north and 79 meters east)
There may be private inholdings within the boundaries of any
Federal and State Reservations shown on this map
All marginal data and lettering generated and positioned by
automated type placement procedures
Certain land lines are omitted because of insufficient data

PROVISIONAL MAP
Produced from original
manuscript drawings. Infor-
mation shown as of date of
field check.



THIS MAP COMPLIES WITH NATIONAL MAP ACCURACY STANDARDS
FOR SALE BY U.S. GEOLOGICAL SURVEY, DENVER, COLORADO 80225
OR RESTON, VIRGINIA 22092

QUADRANGLE LOCATION

1	2	3
4	5	6
7	8	

ADJOINING 7.5 QUADRANGLE NAMES

1 Hannuoh
2 Mud Spring
3 Sane Cahn Ranch
4 McKinnon Tanks
5 Sane Cahn Ranch SW
6 Monitor Peak
7 Reed Ranch
8 Stinking Spring NW

ROAD LEGEND
Improved Road
Unimproved Road
Trail
Interstate Route
U.S. Route
State Route

YELLOW CONE, NEVADA
PROVISIONAL EDITION 1986

38116-A7-TF-024

USGS MMD HISTORICAL MAP
MAR 28 1986
REC'D FILE COPY