

FULTON, MISSOURI

30 X 60 MINUTE SERIES (PLANIMETRIC)

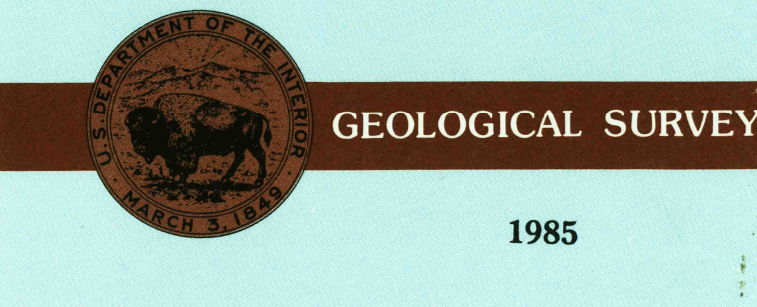
Fulton
MISSOURI

1:100 000-scale
planimetric map



30 X 60 MINUTE QUADRANGLE
SHOWING

- Elevations in meters
- Highways, roads and other manmade structures
- Water features
- Woodland areas
- Geographic names



Produced by the United States Geological Survey

Compiled from USGS 1:24 000-scale topographic maps dated 1972-1975. Planimetry verified from aerial photographs taken 1983 and other source data. Revised information not field checked. Map edited 1985.

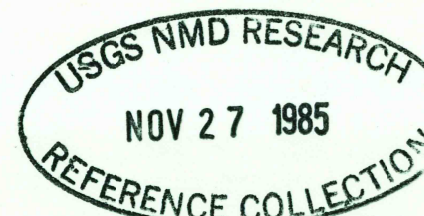
Projection and 10 000-meter grid, zone 15, Universal Transverse Mercator. 25 000-foot grid ticks based on Missouri coordinate system, east and central zones 1927 North American Datum. To place on the predicted North American Datum 1983, move the projection lines 1 meter south and 12 meters east. There may be private holdings within the boundaries of the National or State reservations shown on this map.

NATIONAL GEODETIC VERTICAL DATUM OF 1929
ELEVATIONS SHOWN TO THE NEAREST METER

THIS MAP COMPLIES WITH NATIONAL MAP ACCURACY STANDARDS

CONVERSION TABLE		DECLINATION DIAGRAM	ADJOINING MAPS				
Meters	Feet		1	2	3	4	5
1	3.2808		1	2	3	4	5
2	6.5617		6	7	8		
3	9.8425						
4	13.1234						
5	16.4042						
6	19.6850						
7	22.9659						
8	26.2467						
9	29.5275						
10	32.8084						
To convert meters to feet multiply by 3.2808		UTM grid convergence (GN) and 1983 magnetic declination (MD) at center of map diagram is approximate	<div> 1 Moberly 2 Mexico 3 Jasperville 4 Jefferson City 5 St. Louis 6 Lake of the Ozarks 7 Sullivan 8 Fenton </div>				
To convert feet to meters multiply by 0.3048							

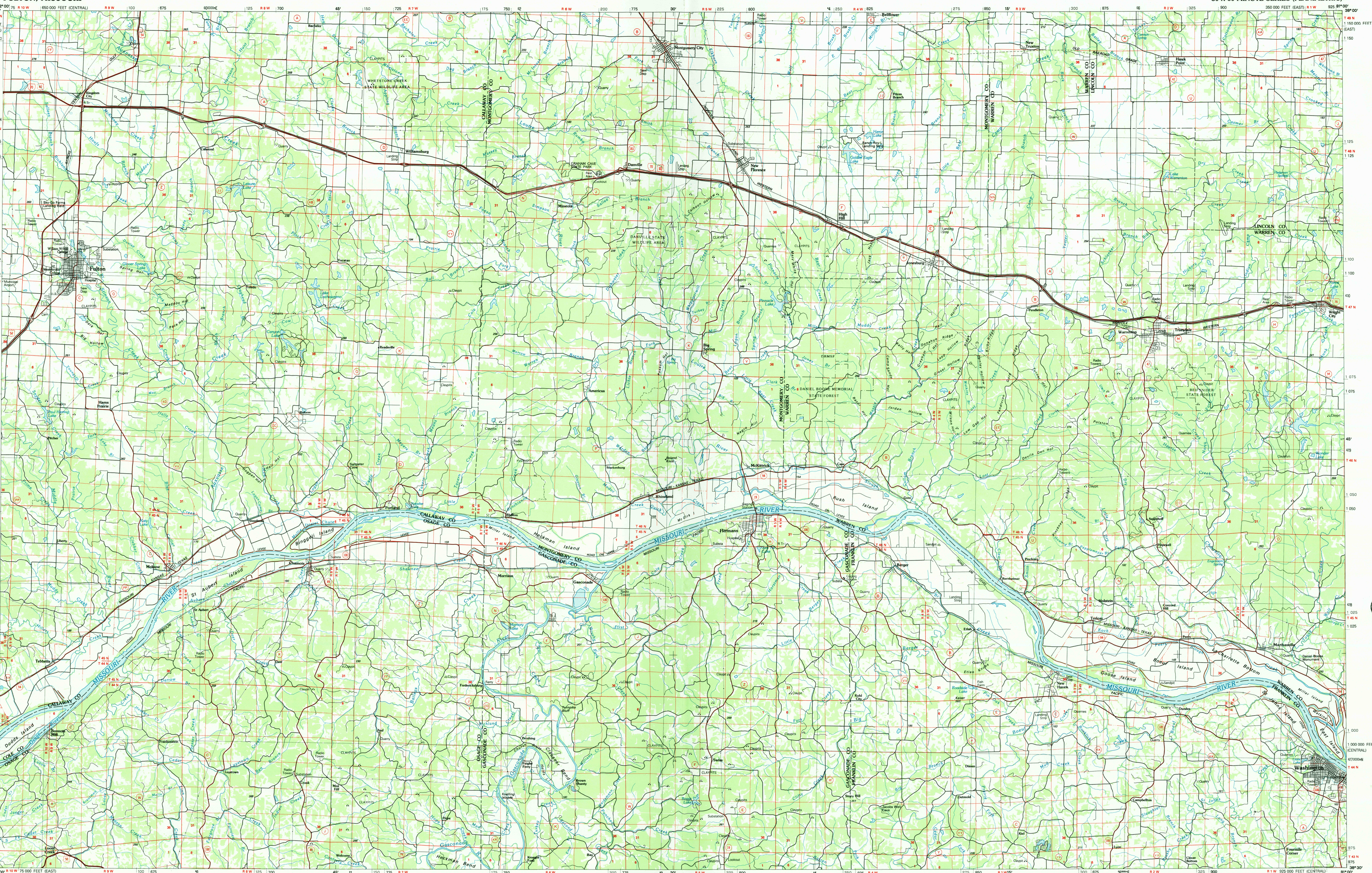
FOR SALE BY U.S. GEOLOGICAL SURVEY
DENVER, COLORADO 80225, OR RESTON, VIRGINIA 22092



Topographic Map Symbols

Primary highway, hard surface	
Secondary highway, hard surface	
Light duty road, principal street, hard or improved surface	
Other road or street, trail	
Route marker: Interstate, U.S., State	
Railroad: standard gauge, narrow gauge	
Bridge: overpass, underpass	
Tunnel: road, railroad	
Built up area, locality, elevation	
Airport: landing field, landing strip	
National boundary	
State boundary	
County boundary	
National or State reservation boundary	
Land grant boundary	
U.S. public lands survey: range, township, section	
Range, township, section line: protracted	
Power transmission line: pipeline	
Dam: dam with lock	
Canal: canal	
Woodrill, water, well, spring	
Mine shaft, adit or cave, mine, quarry, gravel pit	
Campground, picnic area, U.S. location monument	
Ruins: cliff dwelling	
Disrupted surface: strip mine, lava, sand	
Contours: index, intermediate, supplementary	
Bathymetric contours: index, intermediate	
Stream, lake: perennial, intermittent	
Rapids, large and small; falls, large and small	
Area to be submerged, marsh, swamp	
Land subject to controlled inundation; woodland	
Scrub, meadow	
Orchard; vineyard	

A pamphlet describing topographic maps is available on request



SCALE 1:100 000

1 CENTIMETER ON THE MAP REPRESENTS 1 KILOMETER ON THE GROUND

FULTON, MISSOURI
38091-E1-PL-100

1985