

MARYVILLE, MISSOURI

30 X 60 MINUTE SERIES (PLANIMETRIC)

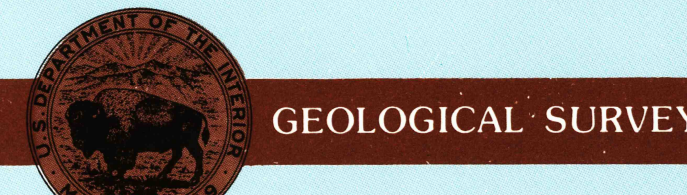
Maryville  
MISSOURI

1:100 000-scale  
planimetric map



30 X 60 MINUTE QUADRANGLE  
SHOWING

- Elevations in meters
- Highways, roads and other manmade structures
- Water features
- Woodland areas
- Geographic names



1986

Produced by the United States Geological Survey

Compiled from USGS 1:24 000-scale topographic maps dated 1984-1985. Planimetry revised from aerial photographs taken 1983 and other source data. Revised information not field checked. Map edited 1986.

Projection and 10 000-meter grid, zone 15 Universal Transverse Mercator. 25 000-foot grid ticks based on Missouri coordinate system, west zone. 1927 North American Datum. To place on the predicted North American Datum 1983 move the projection lines 3 meters north and 30 meters east. There may be private inholdings within the boundaries of the National or State reservations shown on this map.

NATIONAL GEODETIC VERTICAL DATUM OF 1929  
ELEVATIONS SHOWN TO THE NEAREST METERS

THIS MAP COMPLIES WITH NATIONAL MAP ACCURACY STANDARDS

CONVERSION TABLE		DECLINATION DIAGRAM	ADJOINING MAPS		
Meters	Feet		1	2	3
1	3.2808		1	2	3
2	6.5617		4	5	6
3	9.8425		7	8	9
4	13.1234				
5	16.4042				
6	19.6850				
7	22.9659				
8	26.2467				
9	29.5276				
10	32.8084				
To convert meters to feet multiply by 3.2808		UTM grid convergence (GN) and 1986 magnetic declination (MN) at center of map. Diagram is approximate.			
To convert feet to meters multiply by 0.3048					

FOR SALE BY U. S. GEOLOGICAL SURVEY, DENVER, COLORADO 80225  
OR RESTON, VIRGINIA 22092

USGS NMD HISTORICAL MAP

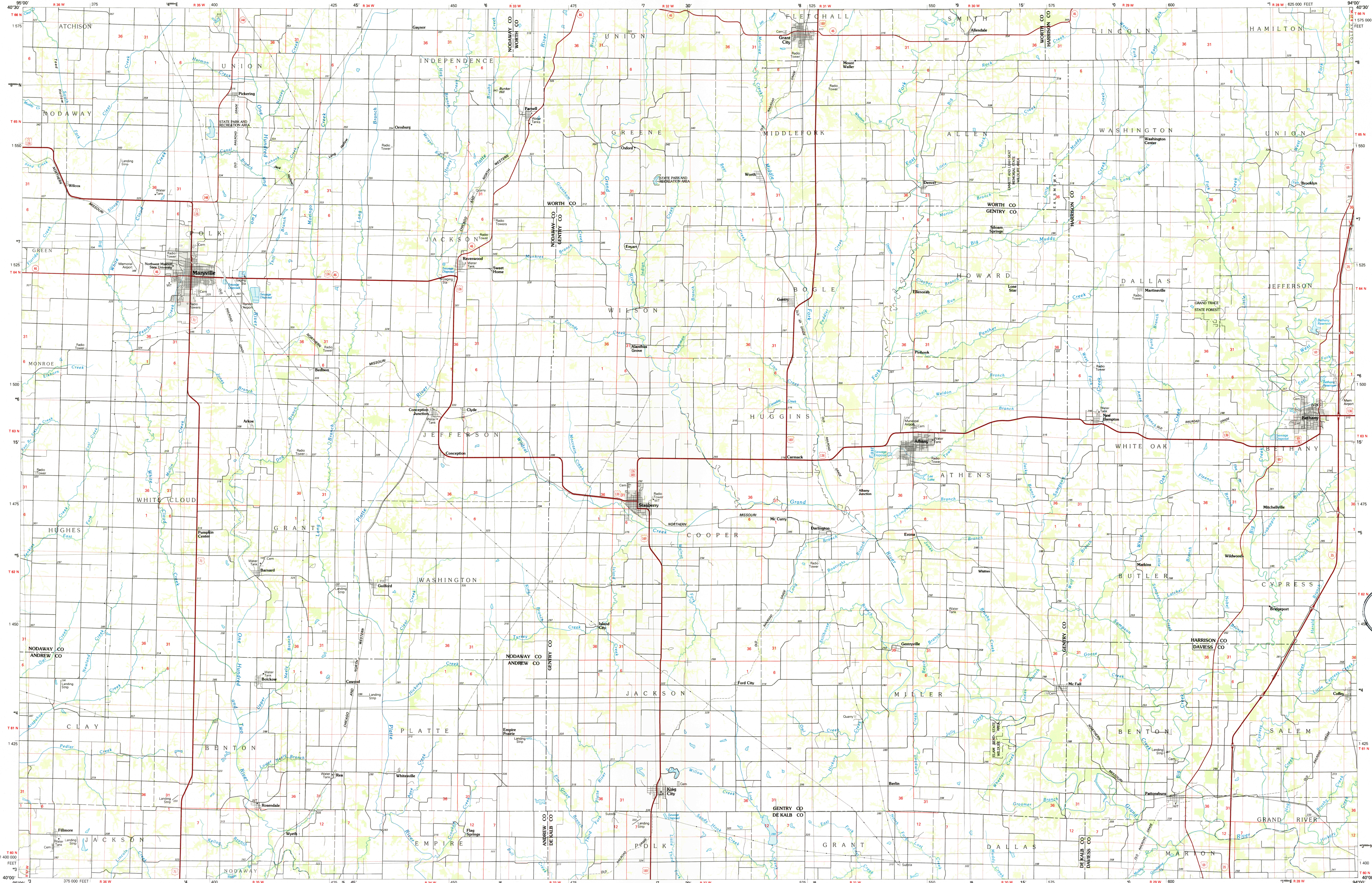
SEP 12 1986

REC'D FILE COPY

Topographic Map Symbols

Primary highway, hard surface	
Secondary highway, hard surface	
Light duty road, principal street, hard or improved surface	
Other road or street; trail	
Route marker: Interstate; U. S. State	
Railroad: standard gauge; narrow gauge	
Bridge: overpass; underpass	
Tunnel: road; railroad	
Built up area, locality, elevation	
Airport, landing field, landing strip	
National boundary	
State boundary	
County boundary	
National or State reservation boundary	
Land grant boundary	
U. S. public lands survey: range, township, section	
Range, township, section line: protected	
Power transmission line; pipeline	
Dam; dam with lock	
Cemetery, building	
Windmill; water well; spring	
Mine shaft; adit or cave; mine, quarry; gravel pit	
Campground; picnic area; U. S. location monument	
Ruins; cliff dwelling	
Distorted surface: strip mine, lava, sand	
Contours: index, intermediate, supplementary	
Bathymetric contours: index, intermediate	
Stream, lake: perennial; intermittent	
Rapids, large and small; falls, large and small	
Area to be submerged; marsh, swamp	
Land subject to controlled inundation; woodland	
Sand; mangrove	
Orchard; vineyard	

A pamphlet describing topographic maps is available on request



SCALE 1:100 000

MARYVILLE, MISSOURI  
40094-A1-PL-100

1986