

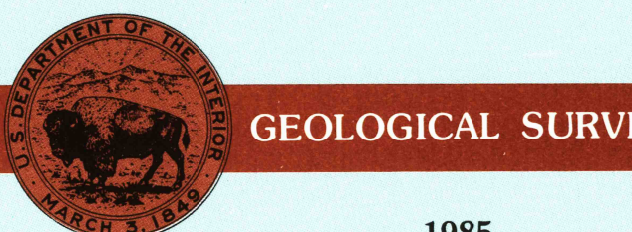
# Sullivan Missouri

1:100 000-scale metric topographic map



30 X 60 MINUTE QUADRANGLE SHOWING

- Contours and elevations in meters
- Highways, roads and other manmade structures
- Water features
- Woodland areas
- Geographic names



Produced by the United States Geological Survey  
Compiled from USGS 1:24 000-scale topographic maps dated 1948-1981. Planimetry revised from aerial photographs taken 1983 and other source data. Revised information not field checked. Map edited 1985.  
Projection and 10 000-meter grid, zone 15, Universal Transverse Mercator  
25 000-foot grid ticks based on Missouri coordinate system, east and central zones  
1927 North American Datum  
To place on the predicted North American Datum 1983, move the projection lines 2 meters south and 12 meters east  
There may be private inholdings within the boundaries of the National or State reservations shown on this map

CONTOUR INTERVAL 20 METERS  
NATIONAL GEODESIC VERTICAL DATUM OF 1929  
ELEVATIONS SHOWN TO THE NEAREST METER

THIS MAP COMPLIES WITH NATIONAL MAP ACCURACY STANDARDS  
FOR SALE BY U.S. GEOLOGICAL SURVEY  
P.O. BOX 25286, DENVER, COLORADO 80225

Meters	Feet
1	3.2808
2	6.5617
3	9.8425
4	13.1234
5	16.4042
6	19.6850
7	22.9659
8	26.2467
9	29.5275
10	32.8084

To convert meters to feet multiply by 3.2808  
To convert feet to meters multiply by 0.3048

DECLINATION DIAGRAM

GN  
M  
31°  
17 MILS  
0.31°

UTM grid convergence (GN and 1983 magnetic declination (M)) at center of map  
Diagram is approximate

1	2	3
1 Jefferson City	2 Fulton	3 Saint Louis
4 Lake of the Ozarks	5 Feboas	6 Lebanon
7 Holla	8 Farmington	

ISBN 0-607-28724-1

RECEIVED DEC 8 1 2000

USGS NMD  
HISTORICAL MAP ARCHIVES

## Topographic Map Symbols

- Primary highway, hard surface

Secondary highway, hard surface

Light duty road, principal street, hard or improved surface

Other road or street, trail

Route marker: Interstate; U.S.; State

Railroad: standard gauge; narrow gauge

Bridge: overpass; underpass

Tunnel: road; railroad

Built up area; locality; elevation

Airport; landing field; landing strip

National boundary

State boundary

National or State reservation boundary

Land grant boundary

U.S. public lands survey: range, township; section

Range, township; section line: protracted

Power transmission line; pipeline

Dam; dam with lock

Cemetery; building

Windmill; water well; spring

Mine shaft; adit or cave; mine, quarry; gravel pit

Compass rose; picnic area; U.S. location monument

Ranch; cliff dwelling

Distorted surface: strip mine, lava, sand

Contours: index; intermediate; supplementary

Bathymetric contours: index; intermediate

Stream, lake; perennial; intermittent

Rapids, levee and small; falls, large and small

Area to be submerged; marsh, swamp

Land subject to controlled inundation; woodland

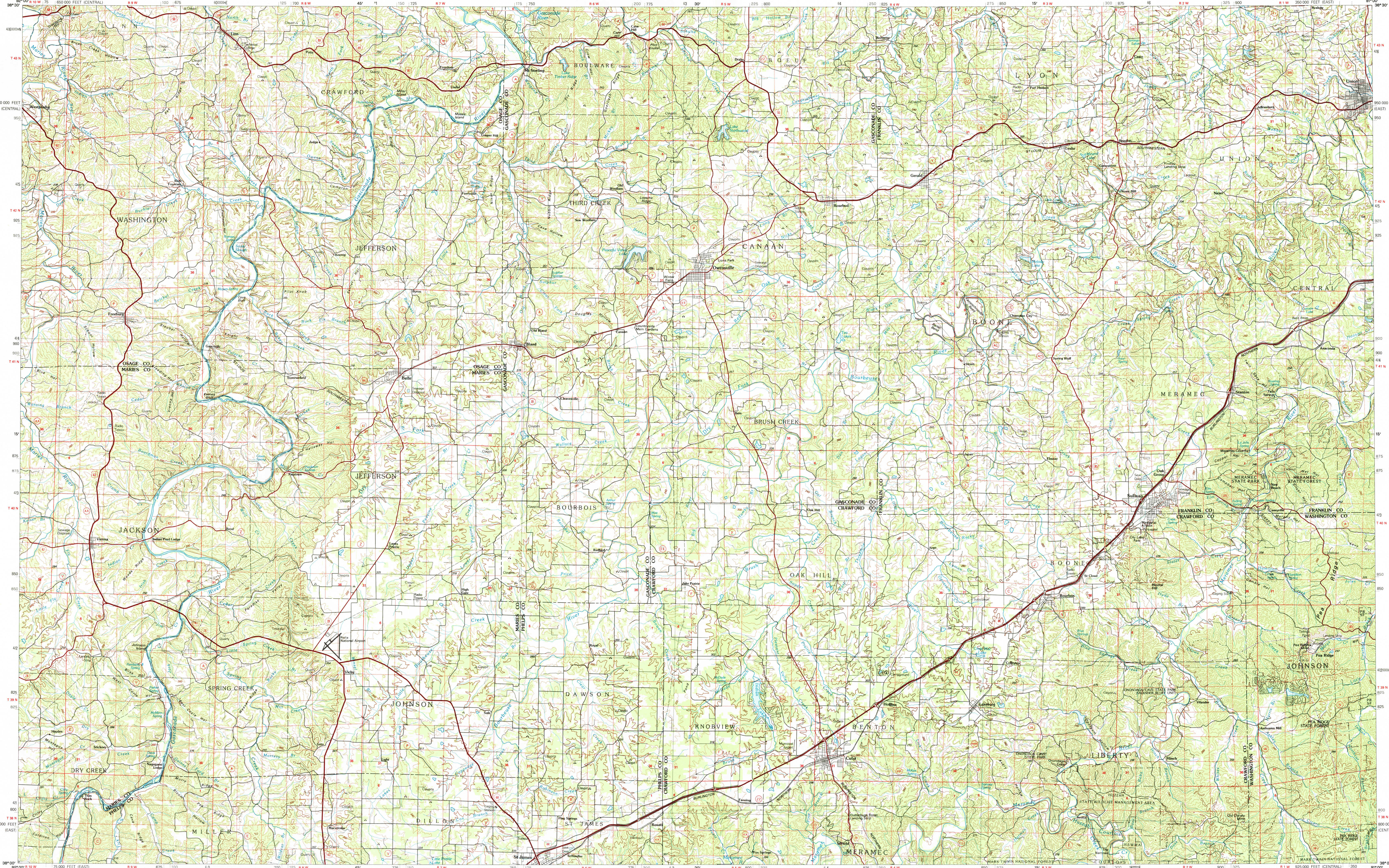
Scrub; mangrove

Orchard; vineyard
- 
- 
- 
- 
- 
- 
- 
- 
- 
- 
- 
- 
- 
- 
- 
- 
- 
- 
- 
- 
- 
- 
- 
- 
- 
- 
- 
- 
- 
- 
- 
- 
- 
- 
- 
- 
- 
- 
- 
- 
- 
- 
- 
- 
- 
- 
- 
- 
- 
- 
- 

A pamphlet describing topographic maps is available on request



# SULLIVAN, MISSOURI



30x60 MINUTE SERIES (TOPOGRAPHIC)  
KILOMETERS 0 1 2 3 4 5 6 7 8 9 10 11 12 13 14 15 16 17 18 19 20  
MILES 0 1 2 3 4 5 6 7 8 9 10 11 12 13 14 15 16 17 18 19 20  
SCALE 1:100 000  
1 CENTIMETER ON THE MAP REPRESENTS 1 KILOMETER ON THE GROUND  
CONTOUR INTERVAL 20 METERS  
SULLIVAN, MISSOURI  
38091-A1-TM-100  
1985