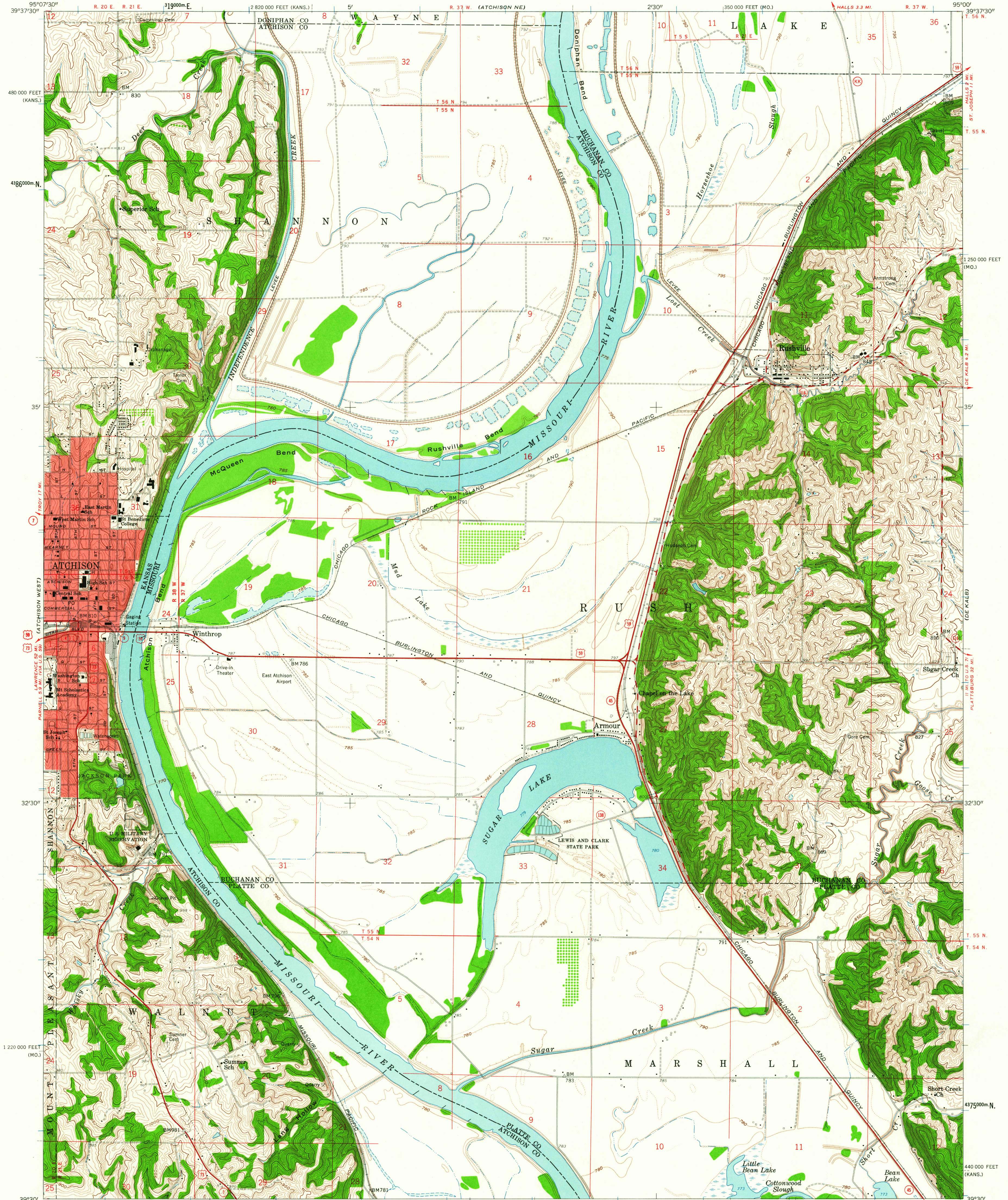


UNITED STATES
DEPARTMENT OF THE INTERIOR
GEOLOGICAL SURVEY

ATCHISON EAST QUADRANGLE
MISSOURI-KANSAS
7.5 MINUTE SERIES (TOPOGRAPHIC)
SE 1/4 ATCHISON 15' QUADRANGLE



Mapped, edited, and published by the Geological Survey
Control by USGS, USC&GS, and USCE
Topography from aerial photographs by photogrammetric methods
Aerial photographs taken 1947 and 1958. Field check 1948
Revised 1960
Polyconic projection. 1927 North American datum
10,000-foot grids based on Missouri coordinate system, west zone
and Kansas coordinate system, north zone
1000-meter Universal Transverse Mercator grid ticks,
zone 15, shown in blue
Red tint indicates area in which only
landmark buildings are shown

SCALE 1:24,000
1 1000 0 1000 2000 3000 4000 5000 6000 7000 FEET
1 KILOMETER
CONTOUR INTERVAL 10 FEET
DOTTED LINES REPRESENT 5-FOOT CONTOURS
DATUM IS MEAN SEA LEVEL
THIS MAP COMPLIES WITH NATIONAL MAP ACCURACY STANDARDS
FOR SALE BY U. S. GEOLOGICAL SURVEY, DENVER 25, COLORADO OR WASHINGTON 25, D. C.
THE MISSOURI GEOLOGICAL SURVEY, ROLLA, MISSOURI
AND BY THE STATE GEOLOGICAL SURVEY, LAWRENCE, KANSAS
A FOLDER DESCRIBING TOPOGRAPHIC MAPS AND SYMBOLS IS AVAILABLE ON REQUEST



ROAD CLASSIFICATION
Heavy-duty ——— Light-duty ———
Medium-duty ——— Unimproved dirt ———
U. S. Route ——— State Route ———

ATCHISON EAST, MO.—KANS.
SE 1/4 ATCHISON 15' QUADRANGLE
N 3930—W 9500/7.5
1960

USGS Library
Reston, VA
Topo Archive

FILE COPY
JUL 20 1981
MAP INFORMATION SERVICE