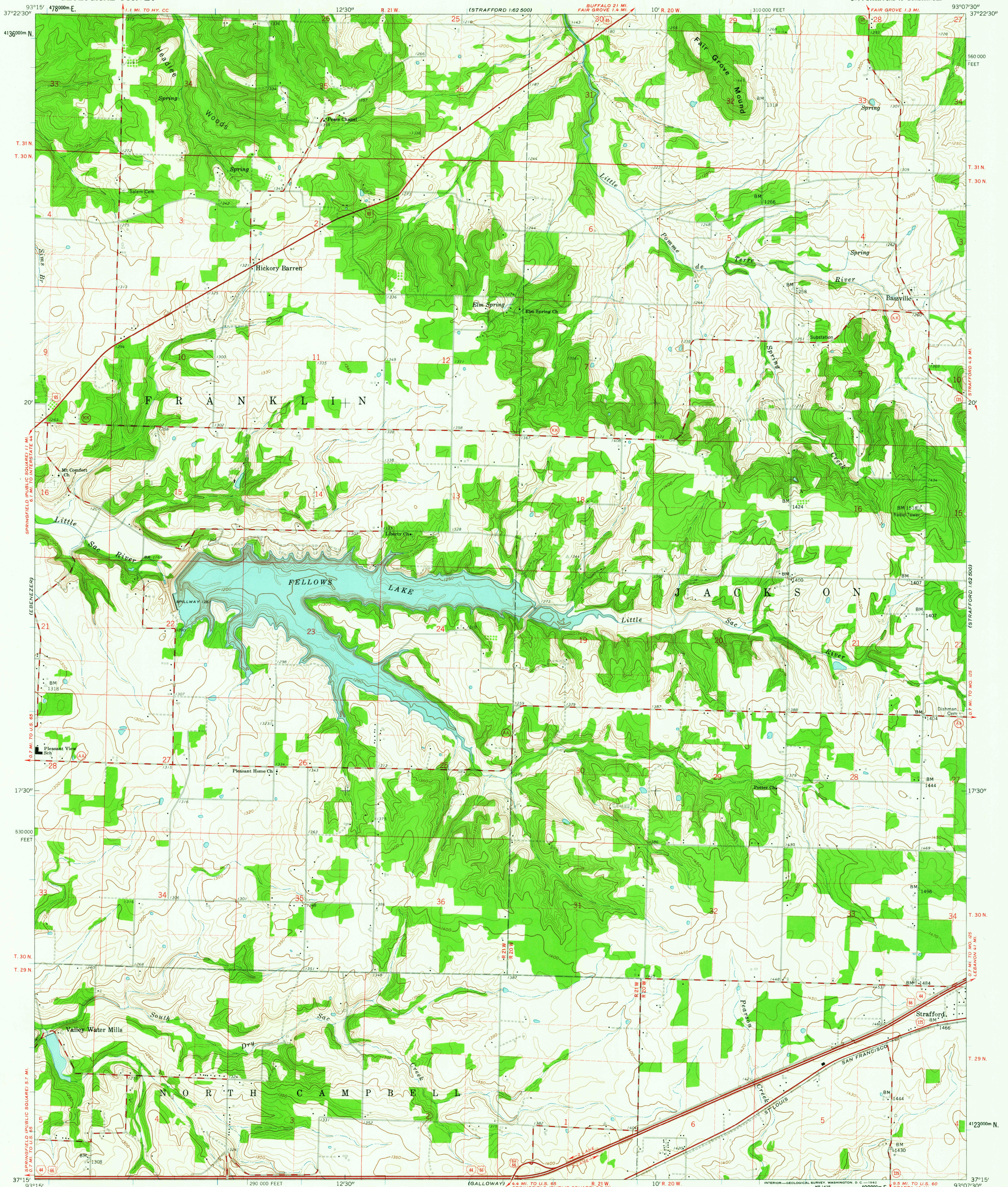


UNITED STATES
DEPARTMENT OF THE INTERIOR
GEOLOGICAL SURVEY

BASSVILLE QUADRANGLE
MISSOURI—GREENE CO.
7.5 MINUTE SERIES (TOPOGRAPHIC)
SW 1/4 STRAFFORD 15' QUADRANGLE



Mapped, edited, and published by the Geological Survey with financial cooperation by State of Missouri, Geological Survey and Water Resources

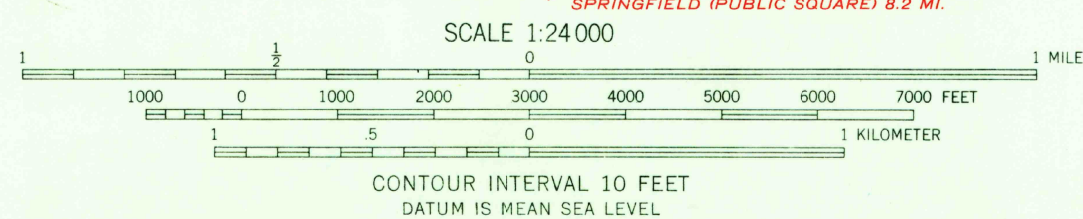
Control by USGS and USC&GS

Culture and drainage in part compiled from aerial photographs taken 1944. Topography by planetable surveys 1946. Revised 1961

Polyconic projection. 1927 North American datum
10,000-foot grid based on Missouri coordinate system, central zone
1000-meter Universal Transverse Mercator grid ticks, zone 15, shown in blue

Fine red dashed lines indicate selected fence and field lines where generally visible on aerial photographs. This information is unchecked

TRUE NORTH
MAGNETIC NORTH
APPROXIMATE MEAN DECLINATION, 1961



THIS MAP COMPLIES WITH NATIONAL MAP ACCURACY STANDARDS
FOR SALE BY U. S. GEOLOGICAL SURVEY, DENVER 25, COLORADO OR WASHINGTON 25, D. C.
AND BY THE MISSOURI GEOLOGICAL SURVEY, ROLLA, MISSOURI
A FOLDER DESCRIBING TOPOGRAPHIC MAPS AND SYMBOLS IS AVAILABLE ON REQUEST

USGS
Historical File
Topographic Division



ROAD CLASSIFICATION
Heavy-duty ——— Light-duty ———
Medium-duty ——— Unimproved dirt ———
Interstate Route U. S. Route State Route

USGS, BASSVILLE, MO.
SW 1/4 STRAFFORD 15' QUADRANGLE
N 3715—W 9307.5/7.5
TOPOGRAPHIC DIVISION 1961

MAR 19 1962

2/35