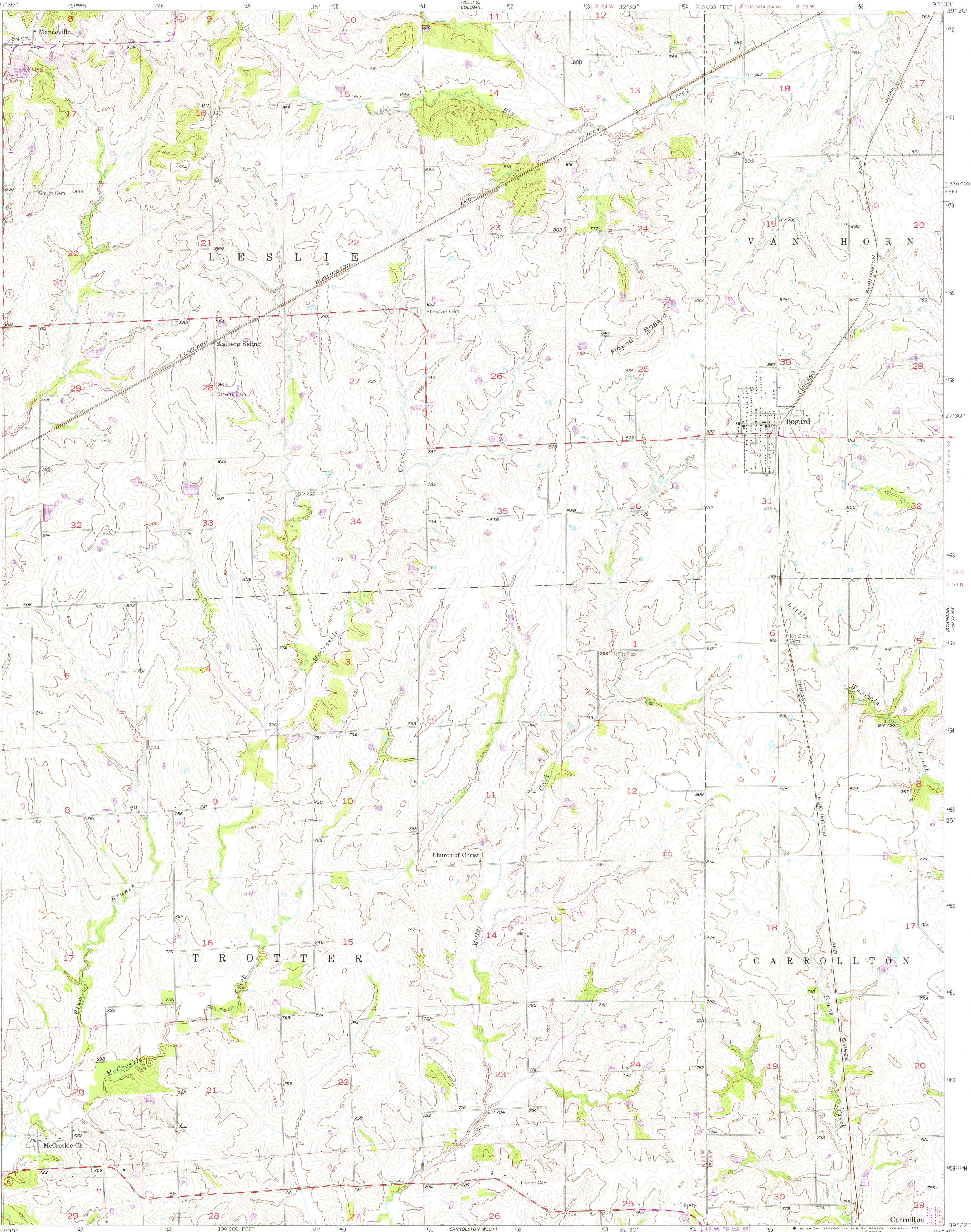


UNITED STATES
DEPARTMENT OF THE INTERIOR
GEOLOGICAL SURVEY

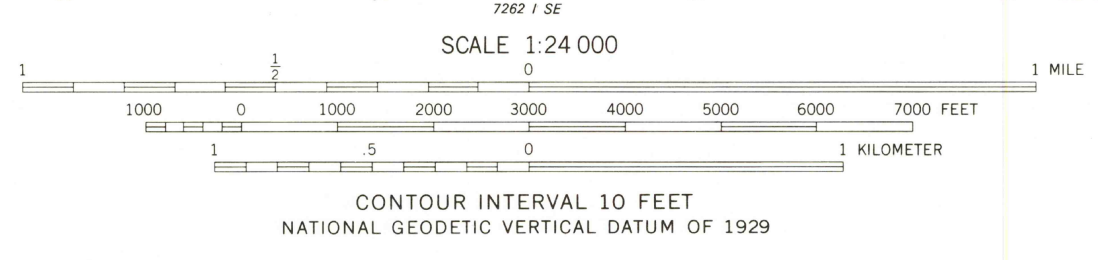
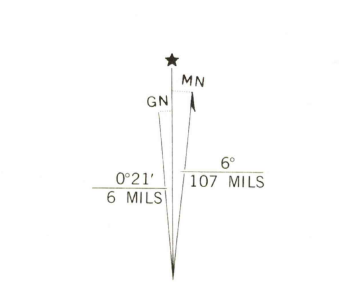


STATE OF MISSOURI
DEPARTMENT OF NATURAL RESOURCES
WALLACE B. HOWE, STATE GEOLOGIST

BOGARD QUADRANGLE
MISSOURI-CARROLL CO.
7.5 MINUTE SERIES (TOPOGRAPHIC)



Mapped, edited, and published by the Geological Survey
Control by USGS and USC&GS
Topography from aerial photographs by multiplex methods
Aerial photographs taken 1948. Field check 1957
Polyconic projection. 1927 North American datum
10,000-foot grid based on Missouri coordinate system, central zone
1000-meter Universal Transverse Mercator grid ticks,
zone 15, shown in blue
Revisions shown in purple compiled from aerial photographs taken
1977. Map edited 1978. This information not field checked



ROAD CLASSIFICATION
Medium-duty ——— Light-duty ———
Unimproved dirt ———
State Route ———

USGS
Historical File
Topographic Division
BOGARD, MO.
N3922.5—W9330/7.5
1957
PHOTOREVISED 1978
AMS 7262 I NE—SERIES V879

THIS MAP COMPLIES WITH NATIONAL MAP ACCURACY STANDARDS
FOR SALE BY U.S. GEOLOGICAL SURVEY, DENVER, COLORADO 80225, OR RESTON, VIRGINIA 22092
AND THE DIVISION OF RESEARCH AND TECHNICAL INFORMATION
MISSOURI DEPARTMENT OF NATURAL RESOURCES, ROLLA, MISSOURI 65401
A FOLDER DESCRIBING TOPOGRAPHIC MAPS AND SYMBOLS IS AVAILABLE ON REQUEST

JUN 18 1979

2950