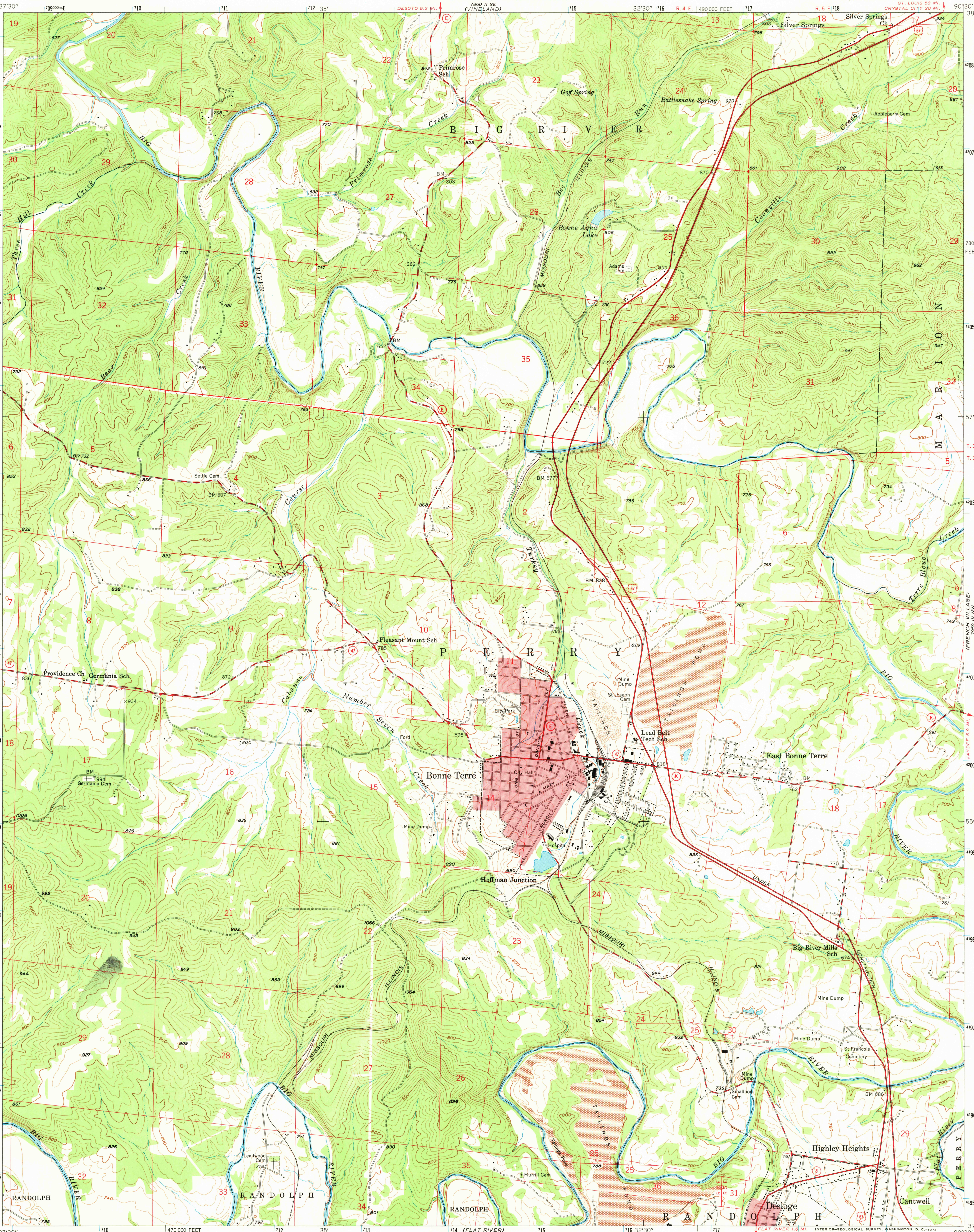


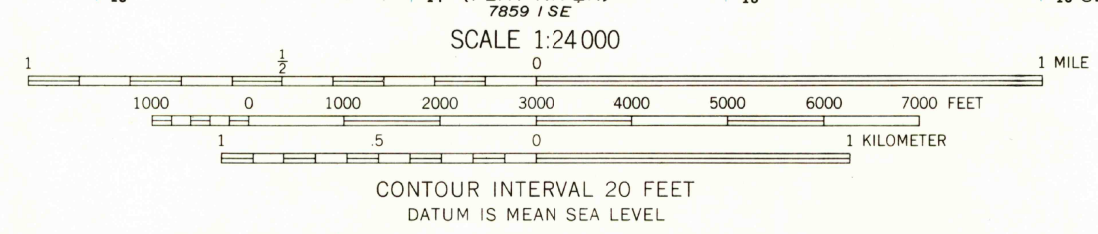
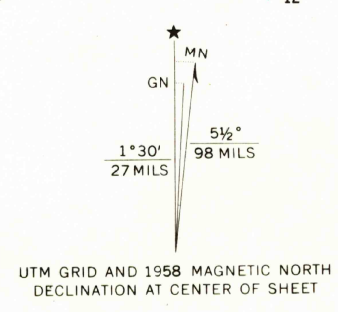
UNITED STATES
DEPARTMENT OF THE INTERIOR
GEOLOGICAL SURVEY

STATE OF MISSOURI
GEOLOGICAL SURVEY AND WATER RESOURCES
THOMAS R. BEVERIDGE, STATE GEOLOGIST

BONNE TERRE QUADRANGLE
MISSOURI—ST. FRANCOIS CO.
7.5 MINUTE SERIES (TOPOGRAPHIC)
NE 1/4 BONNE TERRE 15' QUADRANGLE
ST. LOUIS 53 MI.
CRYSTAL CITY 30 MI.



Mapped, edited, and published by the Geological Survey
Control by USGS and USC&GS
Topography from aerial photographs by multiplex methods
Aerial photographs taken 1954. Field check 1958
Polyconic projection. 1927 North American datum
10,000-foot grid based on Missouri coordinate system, east zone
1000-meter Universal Transverse Mercator grid ticks,
zone 15, shown in blue
Red tint indicates areas in which only
landmark buildings are shown



ROAD CLASSIFICATION

Heavy-duty	Light-duty
Medium-duty	Unimproved dirt
U.S. Route	State Route

USGS
Historical File
Topographic Division

BONNE TERRE, MO.
NE 1/4 BONNE TERRE 15' QUADRANGLE
N 3752.5—W 9030/7.5
1958
AMS 7859 1 NE—SERIES V879

THIS MAP COMPLIES WITH NATIONAL MAP ACCURACY STANDARDS
FOR SALE BY U.S. GEOLOGICAL SURVEY, DENVER, COLORADO 80226, OR WASHINGTON, D. C. 20242
AND BY THE MISSOURI GEOLOGICAL SURVEY, ROLLA, MISSOURI 65401
A FOLDER DESCRIBING TOPOGRAPHIC MAPS AND SYMBOLS IS AVAILABLE ON REQUEST