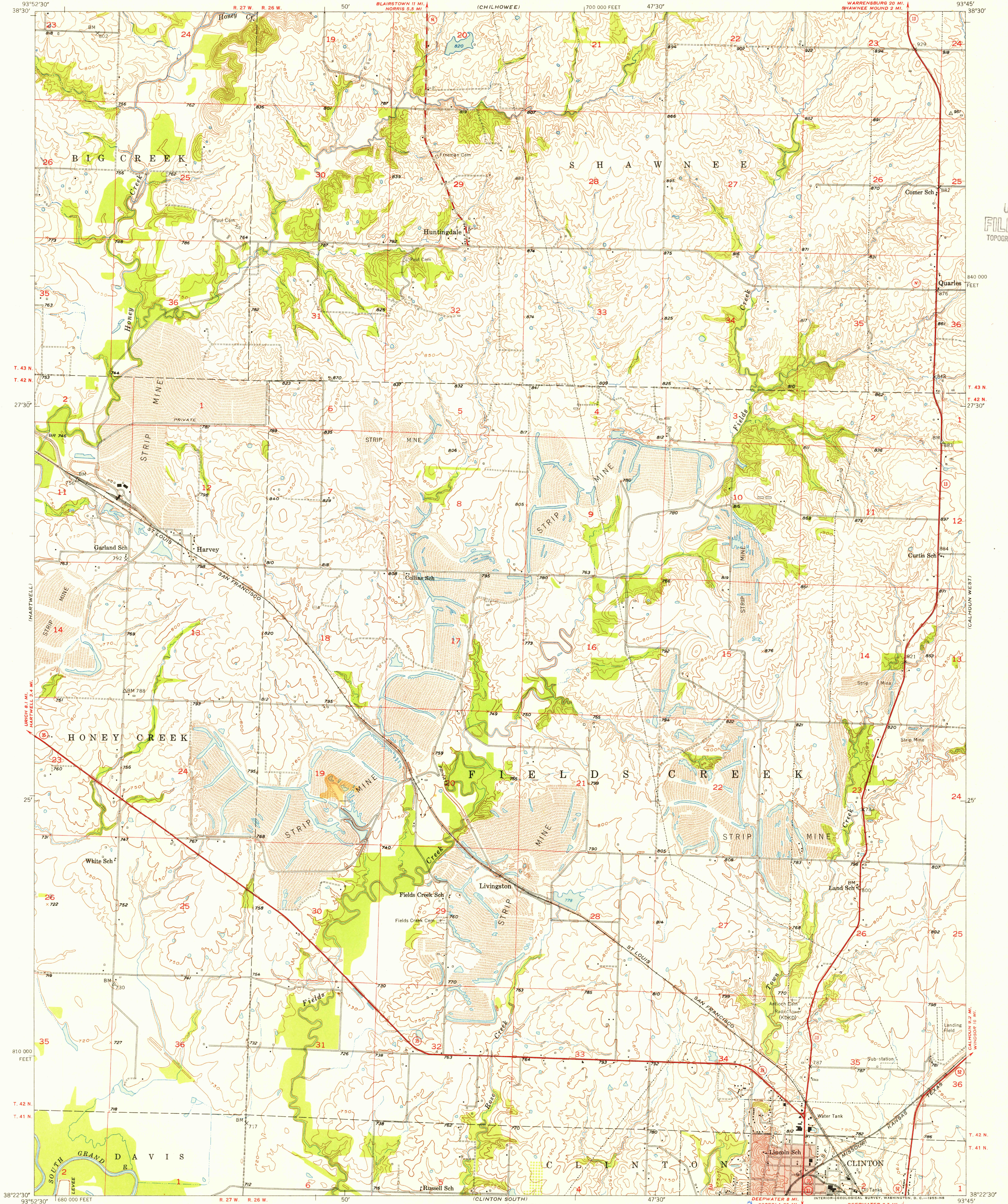


UNITED STATES
DEPARTMENT OF THE INTERIOR
GEOLOGICAL SURVEY

CLINTON NORTH QUADRANGLE
MISSOURI-HENRY CO.
7.5 MINUTE SERIES (TOPOGRAPHIC)

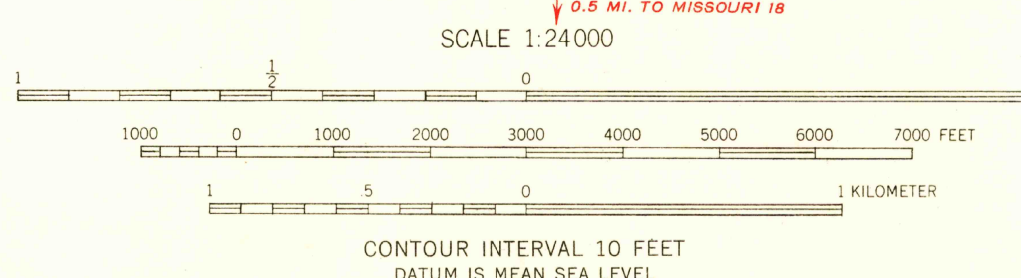
WARRENSBURG 10 MI.
1925 000



U.S.G.S.
FILE COPY
TOPOGRAPHIC DIVISION

Mapped, edited, and published by the Geological Survey as part of the Department of the Interior program for the development of the Missouri River Basin.
Control by USGS and USC&GS.
Topography from aerial photographs by photogrammetric methods and by plane-table surveys 1953. Aerial photographs taken 1950.
Polyconic projection. 1927 North American datum.
10,000-foot grid based on Missouri coordinate system, west zone.
Red tint indicates areas in which only landmark buildings are shown.

TRUE NORTH
MAGNETIC NORTH
APPROXIMATE MEAN DECLINATION, 1953



USGS
Historical File
Topographic Division



ROAD CLASSIFICATION
Heavy-duty 4 LANE 16 LANE Light-duty
Medium-duty 4 LANE 16 LANE Unimproved dirt
U.S. Route State Route

CLINTON NORTH, MO.
N3822.5-W9345/7.5

U.S.G.S.
FILE COPY
TOPOGRAPHIC DIVISION

1953

SEP 13 1955