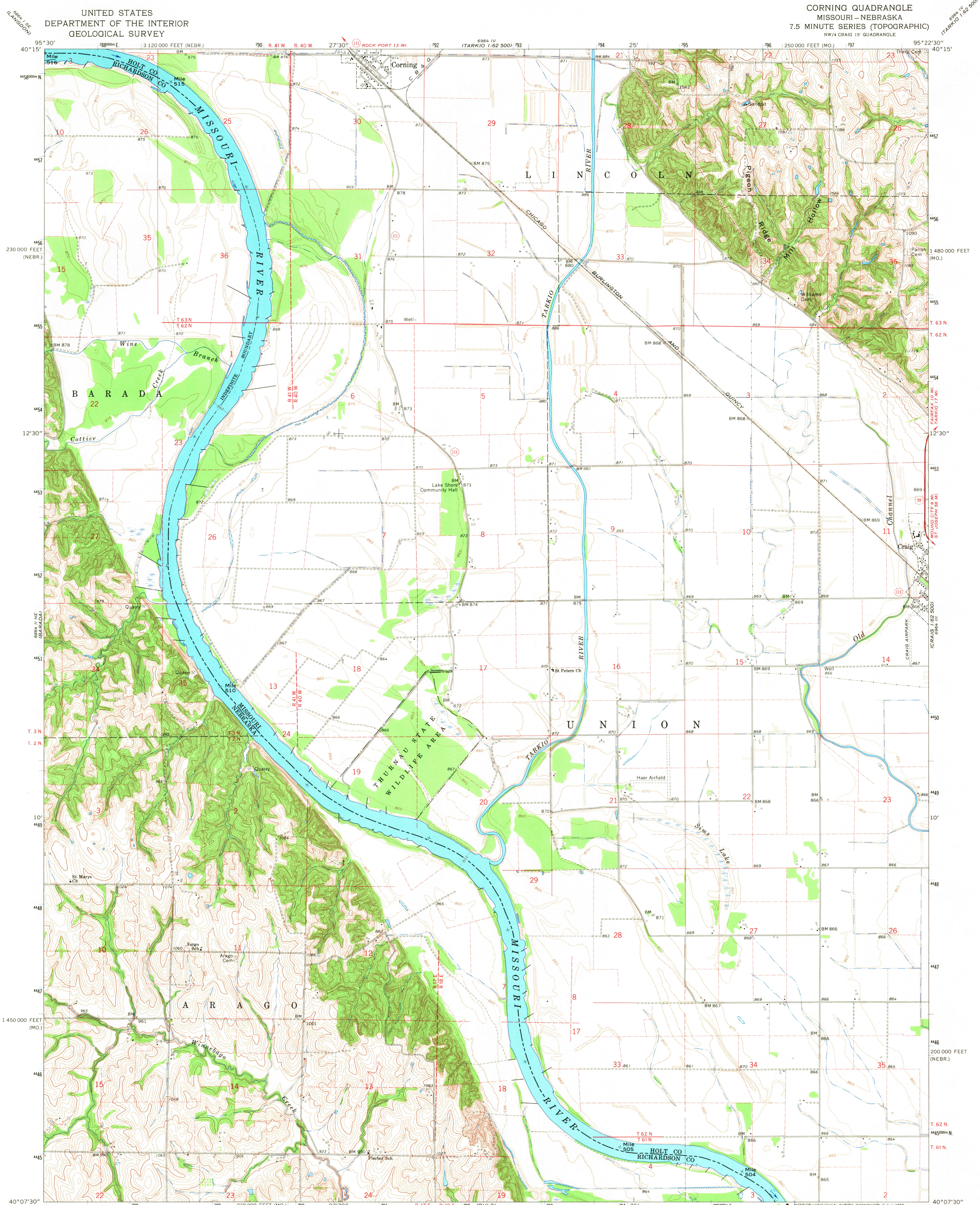


UNITED STATES  
DEPARTMENT OF THE INTERIOR  
GEOLOGICAL SURVEY

CORNING QUADRANGLE  
MISSOURI-NEBRASKA  
7.5 MINUTE SERIES (TOPOGRAPHIC)  
NW/4 CRAIG 15' QUADRANGLE



Mapped, edited, and published by the Geological Survey  
as part of the Department of the Interior program  
for the development of the Missouri River Basin  
Control by USGS and USC&GS

Topography by photogrammetric methods from aerial  
photographs taken 1965 and planetable surveys 1966  
Polyconic projection. 1927 North American datum  
10,000-foot grids based on Missouri coordinate system, west zone  
and Nebraska coordinate system, south zone  
1000-meter Universal Transverse Mercator grid ticks,  
zone 15, shown in blue

Fine red dashed lines indicate selected fence and field lines where  
generally visible on aerial photographs. This information is unchecked

