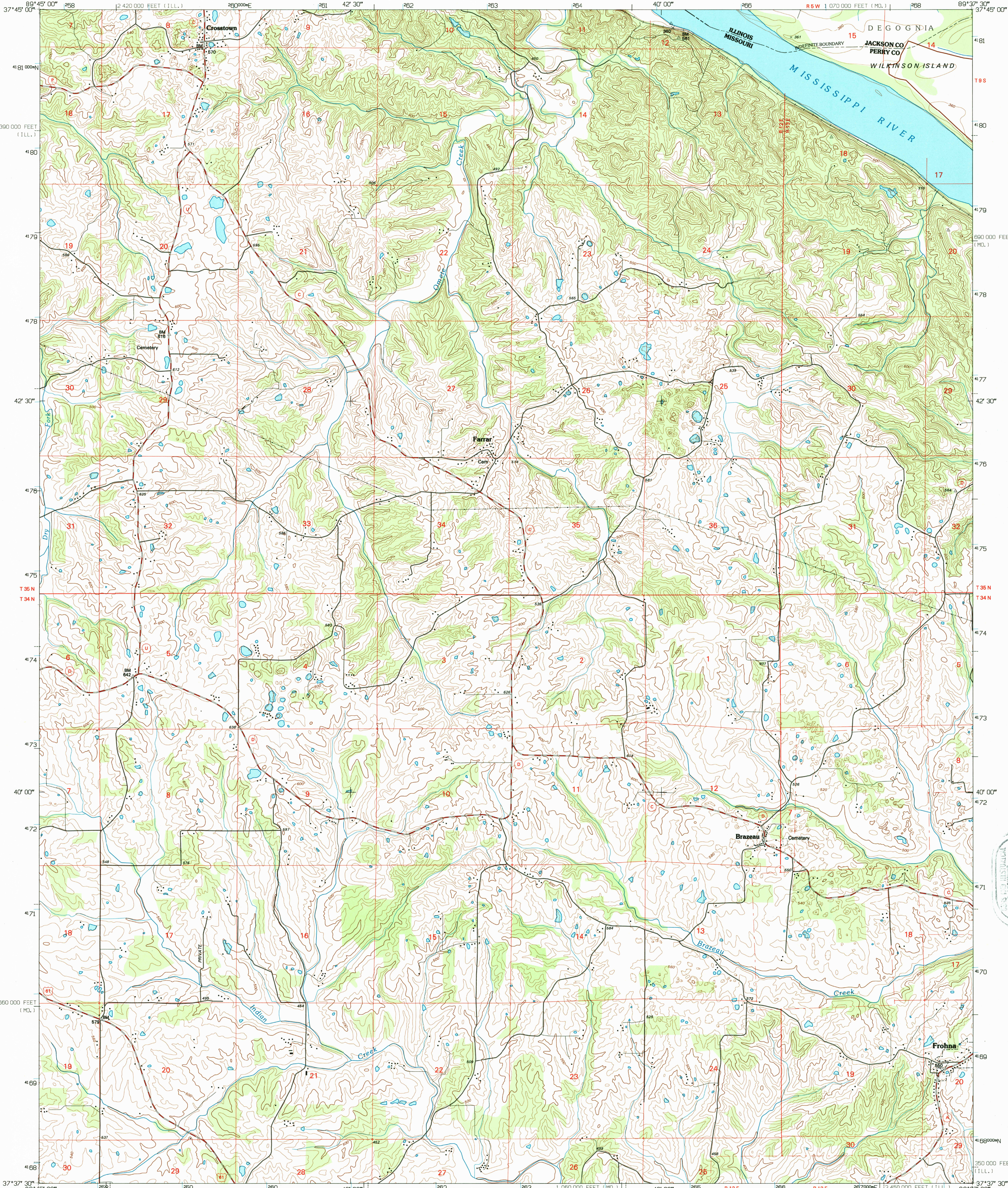


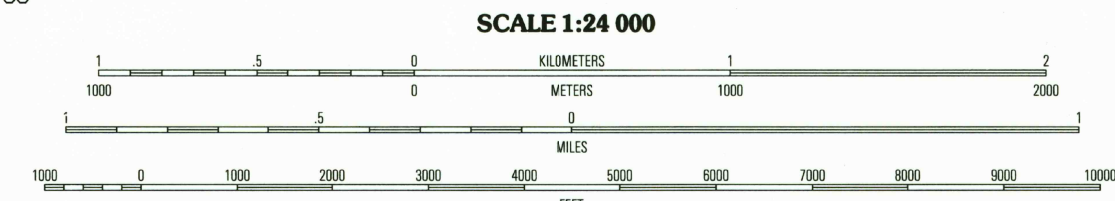
UNITED STATES  
DEPARTMENT OF THE INTERIOR  
GEOLOGICAL SURVEY

CROSTOWN QUADRANGLE  
MISSOURI-ILLINOIS  
7.5-MINUTE SERIES (TOPOGRAPHIC)



Produced by the United States Geological Survey  
Compiled from imagery dated 1946. Revised from imagery dated 1958. U.S.S. survey control, contours and elevations current as of 1947. Map edited 1996  
North American Datum of 1983 (NAD 83). Projection and blue 1000-meter ticks: Universal Transverse Mercator, zone 16 10 000-foot ticks: Missouri (east zone) and Illinois (west zone) Coordinate Systems of 1983  
North American Datum of 1927 (NAD 27) is shown by dashed corner ticks. The values of the shift between NAD 83 and NAD 27 for 7.5-minute intersections are obtainable from National Geodetic Survey NADCON software

UTM GRID AND 1996 MAGNETIC NORTH  
DECLINATION AT CENTER OF SHEET



CONTOUR INTERVAL 20 FEET  
SUPPLEMENTARY CONTOUR INTERVAL 10 FEET  
NATIONAL GEODETIC DATUM OF 1929  
THIS MAP COMPLIES WITH NATIONAL MAP ACCURACY STANDARDS  
FOR SALE BY U.S. GEOLOGICAL SURVEY, DENVER, COLORADO 80225, OR RESTON, VIRGINIA 22092  
AND DIVISION OF GEOLOGY AND LAND SURVEY  
MISSOURI DEPARTMENT OF NATURAL RESOURCES, ROLLA, MISSOURI 65401  
AND ILLINOIS GEOLOGICAL SURVEY, CHAMPAIGN, ILLINOIS 61820  
A FOLDER DESCRIBING TOPOGRAPHIC MAPS AND SYMBOLS IS AVAILABLE ON REQUEST



QUADRANGLE LOCATION

1	2	3	1 Belgrave
			2 Rockwood
			3 Randle
4		5	4 Parryville East
			5 Altenburg
			6 Friedhelm
6	7	8	7 Oak Ridge
			8 Neelys Landing

ADJOINING 7.5' QUADRANGLE NAMES

ROAD CLASSIFICATION  
Primary highway  
hard surface .....  
Secondary highway  
hard surface .....  
Light-duty road, hard or  
improved surface .....  
Unimproved road .....  
Interstate Route  
U.S. Route  
State Route

CROSTOWN, MO-IL  
37089-F6-TF-024

1993

DMA 8059 II NW-SERIES V879

