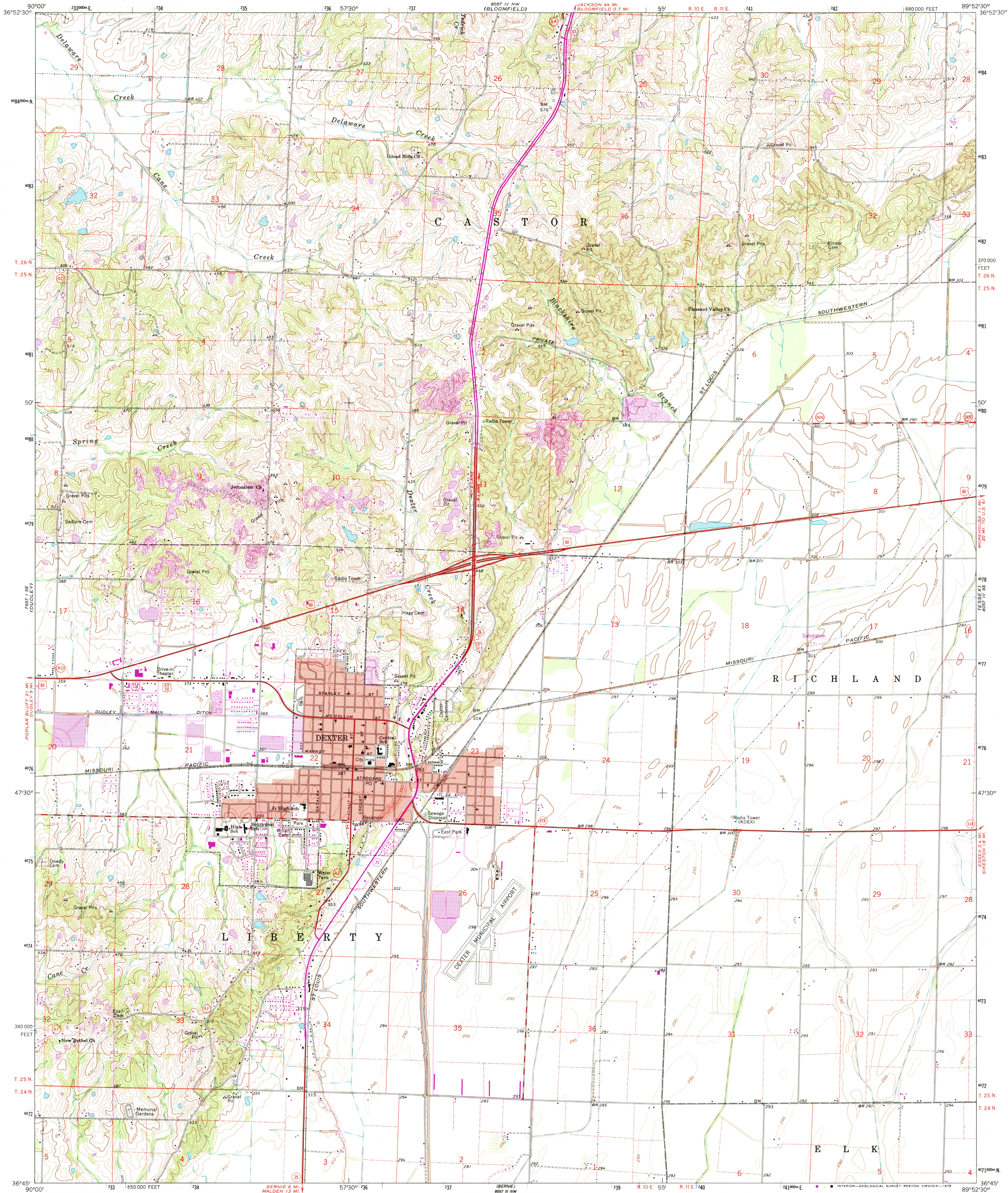


UNITED STATES
DEPARTMENT OF THE INTERIOR
GEOLOGICAL SURVEY

DEXTER QUADRANGLE
MISSOURI-STODDARD CO.
7.5 MINUTE SERIES (TOPOGRAPHIC)
SW/4 BLOOMFIELD 15' QUADRANGLE



Mapped, edited, and published by the Geological Survey

Control by USGS and USC&GS

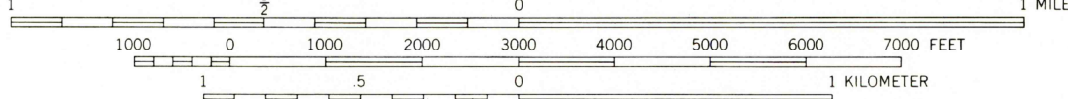
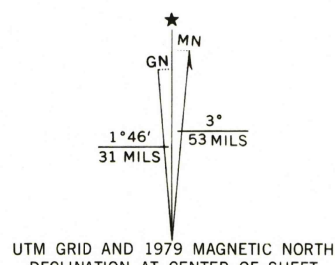
Topography by photogrammetric methods from aerial
photographs taken 1962 and planetable surveys 1963

Polyconic projection. 1927 North American datum
10,000-foot grid based on Missouri coordinate system, east zone
1000-meter Universal Transverse Mercator grid ticks,
zone 16, shown in blue

Red tint indicates area in which only landmark buildings are shown
Fine red dashed lines indicate selected fence and field lines where
generally visible on aerial photographs. This information is unchecked

Revisions shown in purple and woodland compiled from
aerial photographs taken 1976 and other source data
This information not field checked. Map edited 1979

Purple tint indicates extension of urban areas

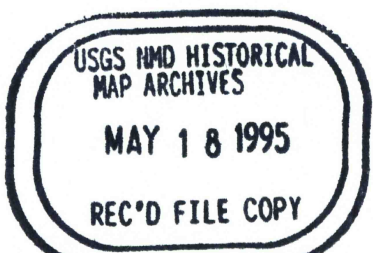


CONTOUR INTERVAL 10 FEET
DOTTED LINES REPRESENT 5-FOOT CONTOURS
NATIONAL GEODETIC VERTICAL DATUM OF 1929

THIS MAP COMPLIES WITH NATIONAL MAP ACCURACY STANDARDS
FOR SALE BY U.S. GEOLOGICAL SURVEY, DENVER, COLORADO 80225, OR RESTON, VIRGINIA 22092
AND BY THE MISSOURI GEOLOGICAL SURVEY, ROLLA, MISSOURI 65401
A FOLDER DESCRIBING TOPOGRAPHIC MAPS AND SYMBOLS IS AVAILABLE ON REQUEST



ROAD CLASSIFICATION	
Heavy-duty	Light-duty
Medium-duty	Unimproved dirt
U.S. Route	State Route



DEXTER, MO.
SW/4 BLOOMFIELD 15' QUADRANGLE
N3645-W8952.5/7.5
1963
PHOTOREVISED 1979
AMS 8057 IV SW-SERIES V879