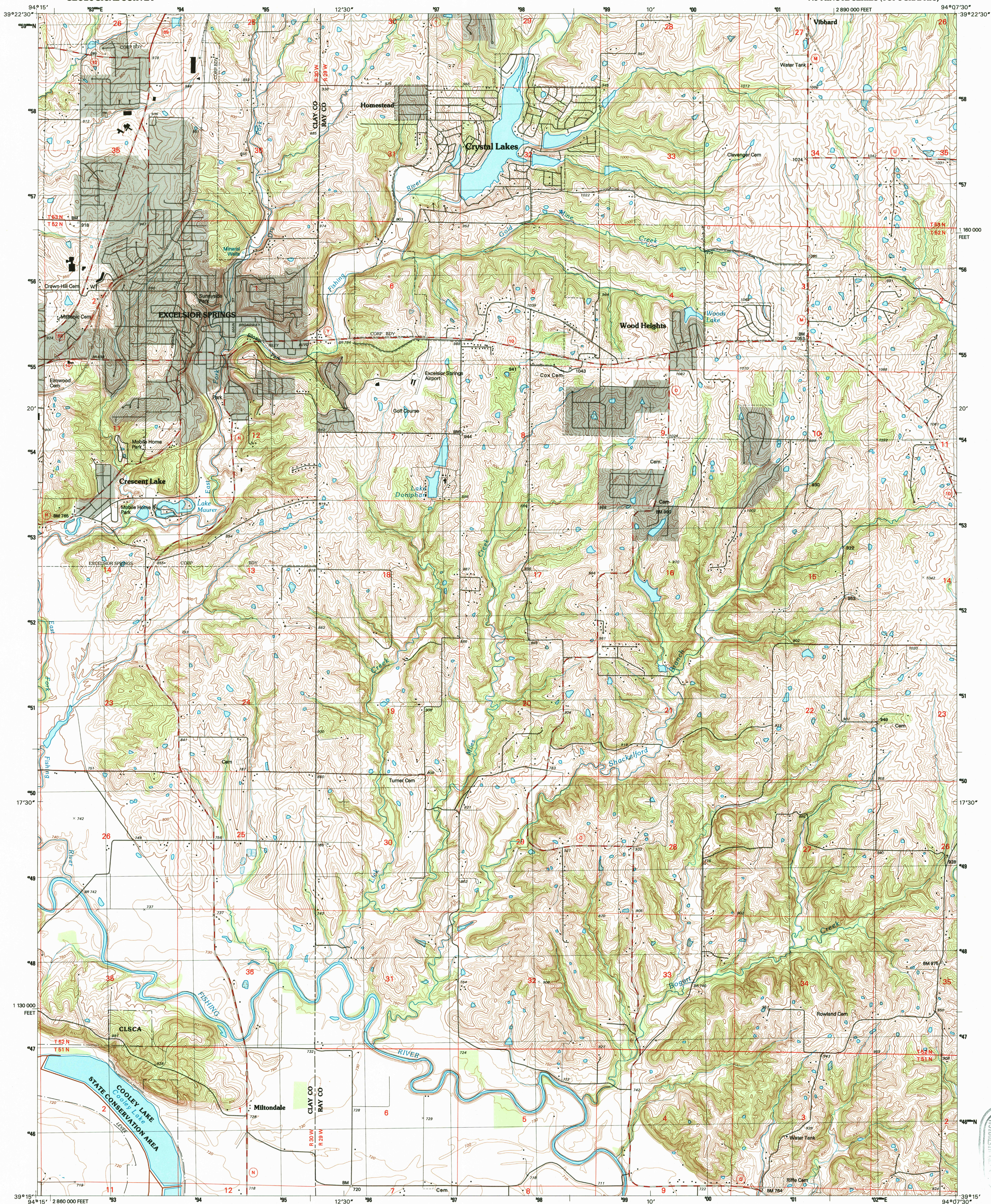
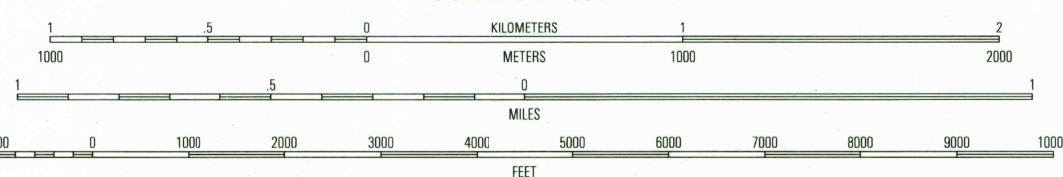
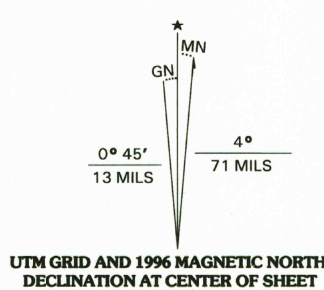


UNITED STATES  
DEPARTMENT OF THE INTERIOR  
GEOLOGICAL SURVEY

EXCELSIOR SPRINGS QUADRANGLE  
MISSOURI  
7.5-MINUTE SERIES (TOPOGRAPHIC)



Produced by the United States Geological Survey  
Compiled by photogrammetric methods from imagery dated 1947  
Field checked 1956-57. Revised from imagery dated 1990  
PLSS and survey control current as of 1957. Map edited 1996  
Contours not revised. Contours that conflict with revised  
planimetry are dashed.  
North American Datum of 1983 (NAD 83). Projection and  
1 000-meter grid: Universal Transverse Mercator, zone 15  
10 000-foot ticks: Missouri Coordinate System (west zone)  
North American Datum of 1927 (NAD 27) is shown by dashed  
corner ticks. The values of the shift between NAD 83 and NAD 27  
for 7.5-minute intersections are obtainable from National Geodetic  
Survey NADCON software.  
There may be private inholdings within the boundaries of  
the National or State reservations shown on this map.



CONTOUR INTERVAL 10 FEET  
NATIONAL GEODETIC VERTICAL DATUM OF 1929



1	2	3	1 High
4	5	6	2 Low
7	8	9	3 Knoxville
			4 Keosauqua
			5 Rayville
			6 Missouri City
			7 Buckner
			8 Camden

ROAD CLASSIFICATION  
Primary highway .....  
hard surface .....  
Secondary highway .....  
hard surface .....  
Light-duty road, hard or  
improved surface .....  
Unimproved road .....  
Interstate Route .....  
U.S. Route .....  
State Route .....

EXCELSIOR SPRINGS, MO  
39094-C2-TF-024  
1990

FOR SALE BY U.S. GEOLOGICAL SURVEY, DENVER, COLORADO 80225, OR RESTON, VIRGINIA 22092  
AND DIVISION OF GEOLOGY AND LAND SURVEY  
MISSOURI DEPARTMENT OF NATURAL RESOURCES, ROLLA, MISSOURI 65401  
A FOLDER DESCRIBING TOPOGRAPHIC MAPS AND SYMBOLS IS AVAILABLE ON REQUEST

DMA 7162 1 SW-SERIES V879

