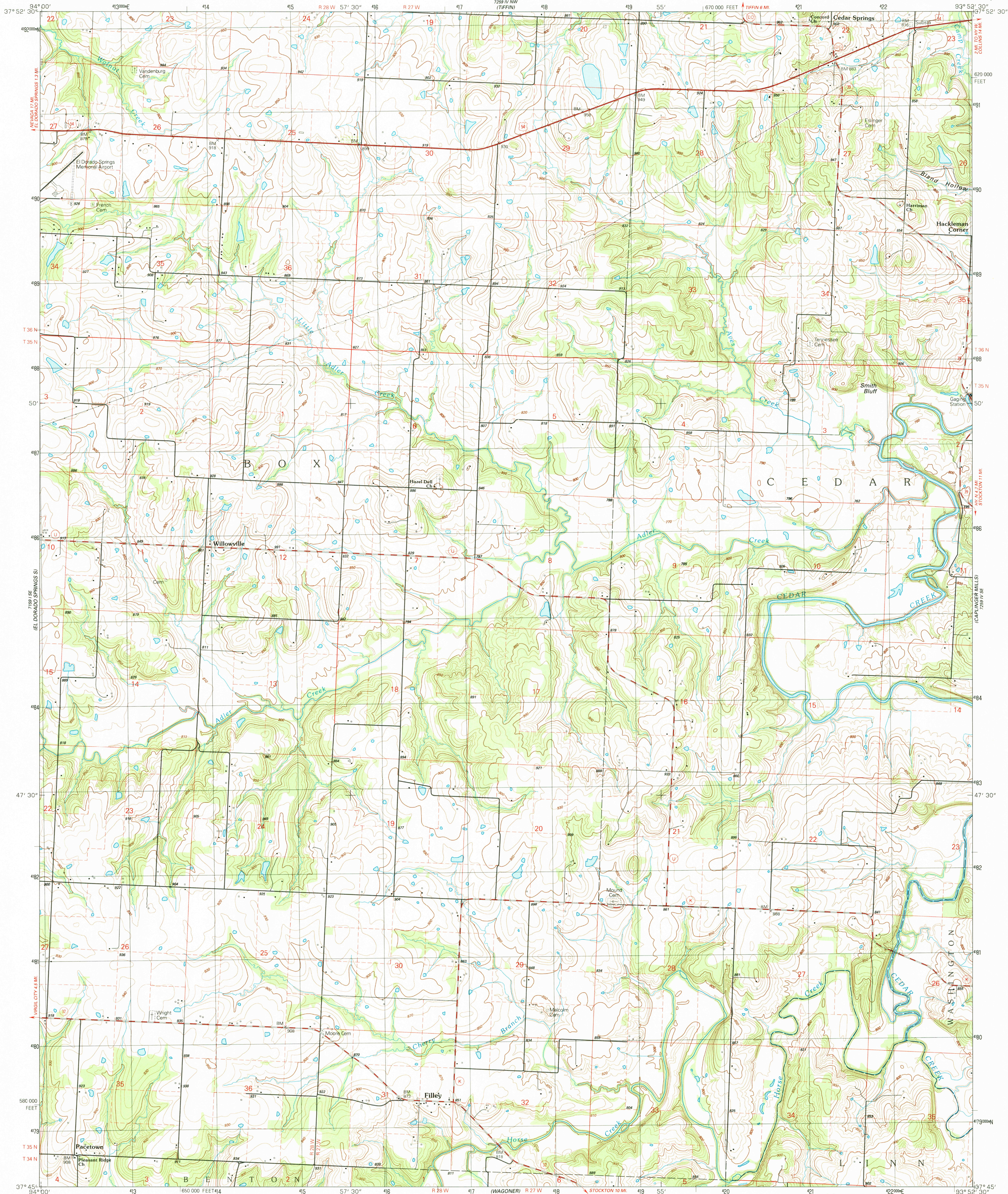


UNITED STATES  
DEPARTMENT OF THE INTERIOR  
GEOLOGICAL SURVEY

FILLEY QUADRANGLE  
MISSOURI-CEDAR CO.  
7.5 MINUTE SERIES (TOPOGRAPHIC)



Produced by the United States Geological Survey  
Control by USGS and NOS/NOAA

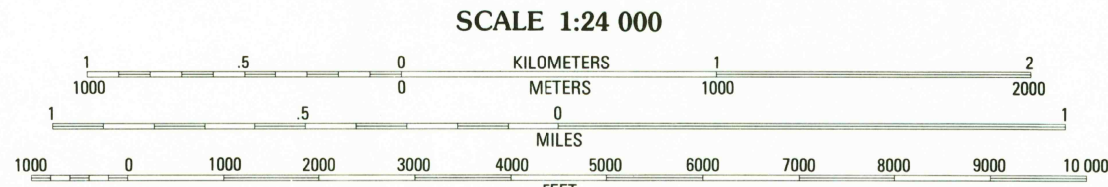
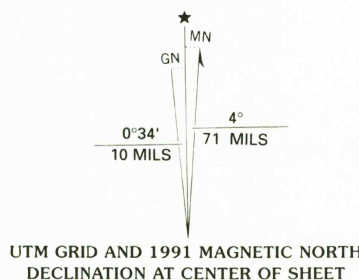
Compiled from aerial photographs taken 1986  
Field checked 1989. Map edited 1991

Projection and 10,000-foot grid ticks: Missouri coordinate  
system, west zone (transverse Mercator)

1000-meter Universal Transverse Mercator grid, zone 15  
1927 North American Datum

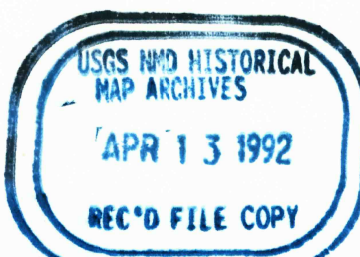
The difference between 1927 North American Datum and North  
American Datum of 1983 (NAD 83) for 7.5-minute intersections  
is given in USGS Bulletin 1875. The NAD 83 is shown by  
dashed corner ticks

Fine red dashed lines indicate selected fence and field lines where  
generally visible on aerial photographs. This information is unchecked



THIS MAP COMPLIES WITH NATIONAL MAP ACCURACY STANDARDS  
FOR SALE BY U. S. GEOLOGICAL SURVEY, DENVER, COLORADO 80225, OR RESTON, VIRGINIA 22092  
AND DIVISION OF GEOLOGY AND LAND SURVEY  
MISSOURI DEPARTMENT OF NATURAL RESOURCES, ROLLA, MISSOURI 65401  
A FOLDER DESCRIBING TOPOGRAPHIC MAPS AND SYMBOLS IS AVAILABLE ON REQUEST

ROAD CLASSIFICATION  
Primary highway, hard surface ..... Light-duty road, hard or improved surface .....  
Secondary highway, hard surface ..... Unimproved road .....  
Interstate Route U. S. Route State Route



FILLEY, MO.  
37093-G8-TF-024

1991

DMA 7259 IV SW-SERIES V879