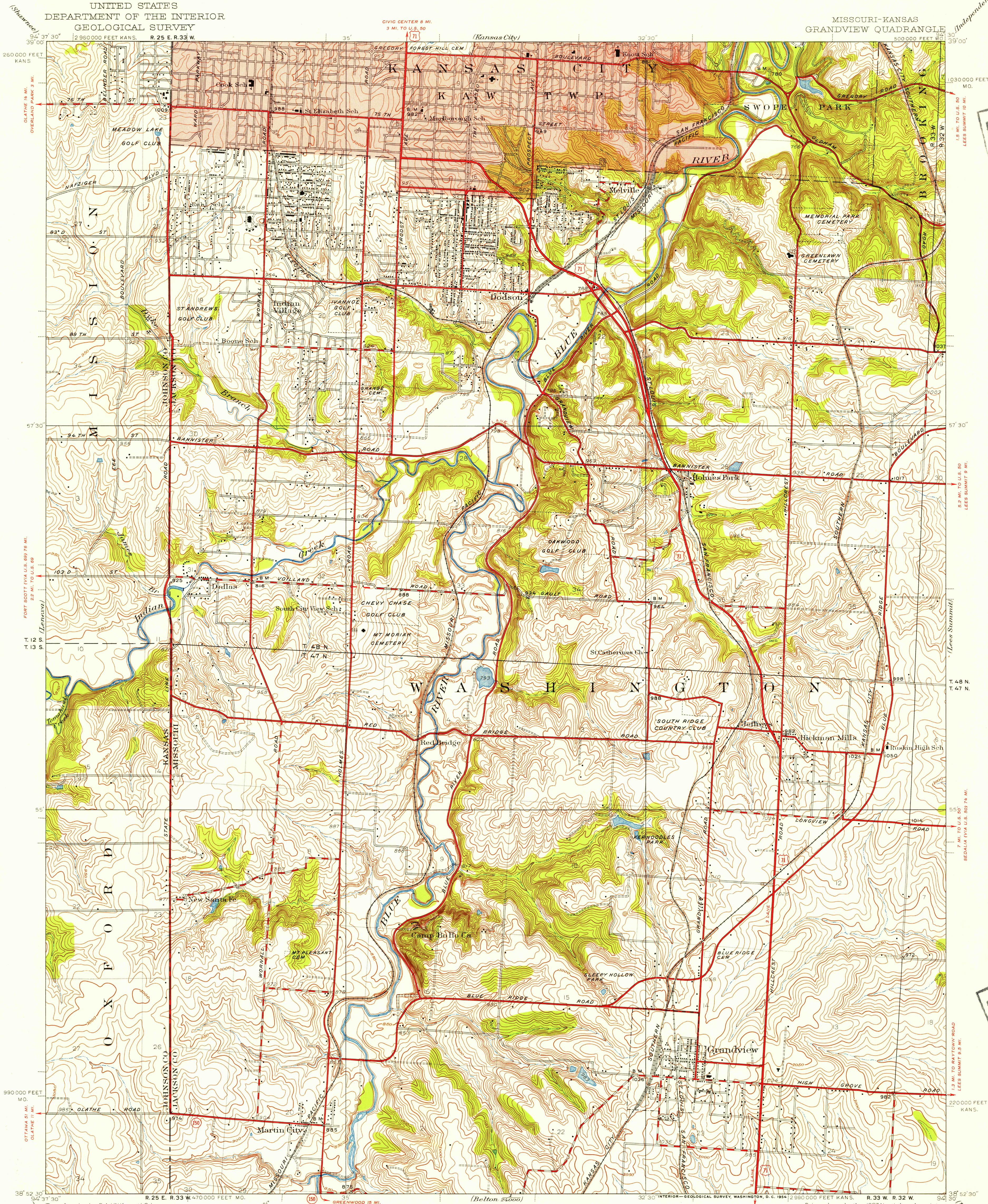


UNITED STATES
DEPARTMENT OF THE INTERIOR
GEOLOGICAL SURVEY

MISSOURI-KANSAS
GRANDVIEW QUADRANGLE



Topography by C.A. Killian, W.C. Lay,
A.V. Ferry, W.P. Metcalfe, and E.R. Herr
Surveyed in 1934

Red tint indicates areas in which only
landmark buildings are shown

APPROXIMATE MEAN
DECLINATION, 1934

SCALE 1:24000

Contour interval 10 feet
Datum is mean sea level

FOR SALE BY U.S. GEOLOGICAL SURVEY, FEDERAL CENTER, DENVER, COLORADO OR WASHINGTON 25, D.C.
BY THE MISSOURI GEOLOGICAL SURVEY, ROLLA, MISSOURI
AND BY THE STATE GEOLOGICAL SURVEY, LAWRENCE, KANSAS
A FOLDER DESCRIBING TOPOGRAPHIC MAPS AND SYMBOLS IS AVAILABLE ON REQUEST

USGS
Historical File
Topographic Division

ROAD CLASSIFICATION
Heavy-duty ——— 4 LANE 6 LANE Light-duty ———
Medium-duty ——— 4 LANE 6 LANE Unimproved dirt ———
U.S. Route ——— State Route ———

GRANDVIEW MO.-KANS.
N 38525-W 9439/75
1934

AUG 3 1954

2170