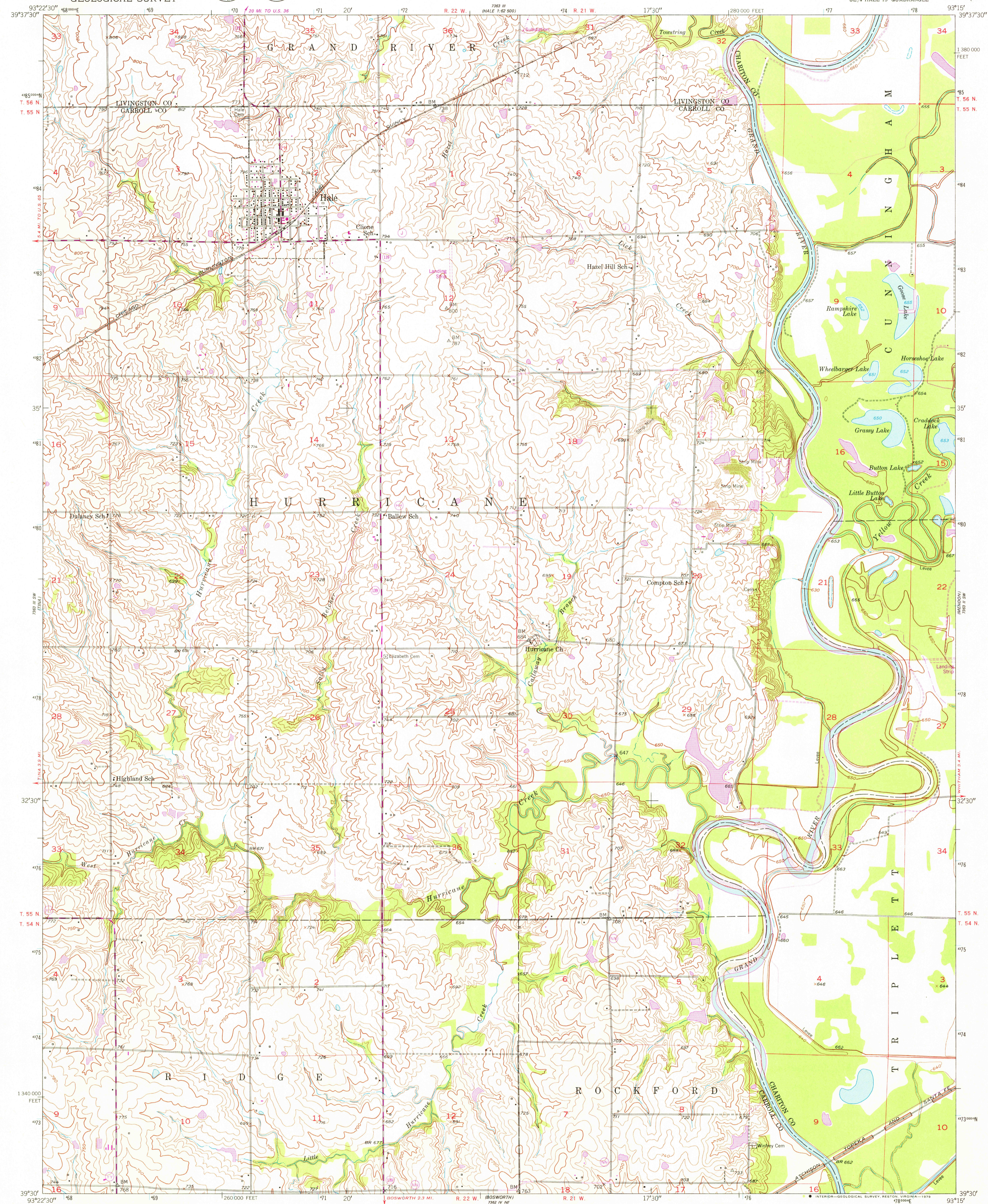


UNITED STATES
DEPARTMENT OF THE INTERIOR
GEOLOGICAL SURVEY



HALE QUADRANGLE
MISSOURI
7.5 MINUTE SERIES (TOPOGRAPHIC)
SE 1/4 HALE 15' QUADRANGLE

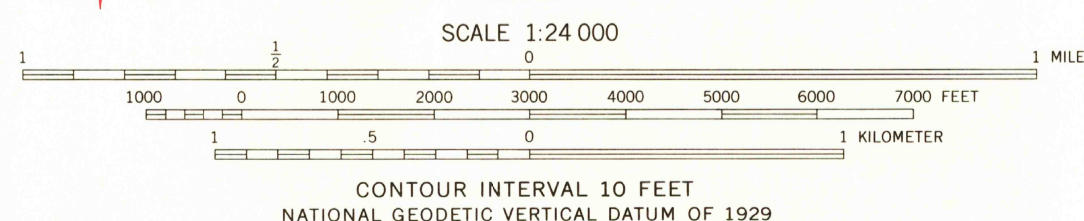
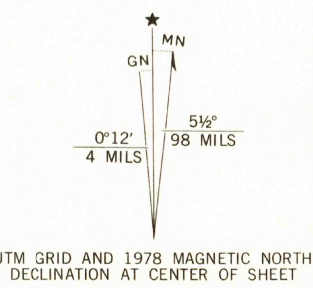


Mapped, edited, and published by the Geological Survey as part of the Department of the Interior program for the development of the Missouri River Basin Control by USGS and USC&GS.

Culture and drainage in part compiled from aerial photographs taken 1939. Topography by plane-table methods 1950. Polyconic projection. 1927 North American datum 10,000-foot grid based on Missouri coordinate system, central zone.

1000-meter Universal Transverse Mercator grid ticks, zone 15, shown in blue.

Revisions shown in purple compiled from aerial photographs taken 1977. Map edited 1978. This information not field checked.



THIS MAP COMPLIES WITH NATIONAL MAP ACCURACY STANDARDS FOR SALE BY U.S. GEOLOGICAL SURVEY, DENVER, COLORADO 80225, OR RESTON, VIRGINIA 22092 AND THE DIVISION OF RESEARCH AND TECHNICAL INFORMATION, MISSOURI DEPARTMENT OF NATURAL RESOURCES, ROLLA, MISSOURI 65401. A FOLDER DESCRIBING TOPOGRAPHIC MAPS AND SYMBOLS IS AVAILABLE ON REQUEST.



ROAD CLASSIFICATION
Heavy-duty ———+LANE+LANE——— Light-duty ———+LANE+LANE———
Medium-duty ———+LANE+LANE——— Unimproved dirt ———+LANE+LANE———
U. S. Route State Route

USGS
Historical File
Topographic Division

HALE, MO.
SE 1/4 HALE 15' QUADRANGLE
N3930-W9315/7.5

1950
PHOTOREVISED 1978
AMS 7363 III SE-SERIES V879

JUN 18 1979

3000