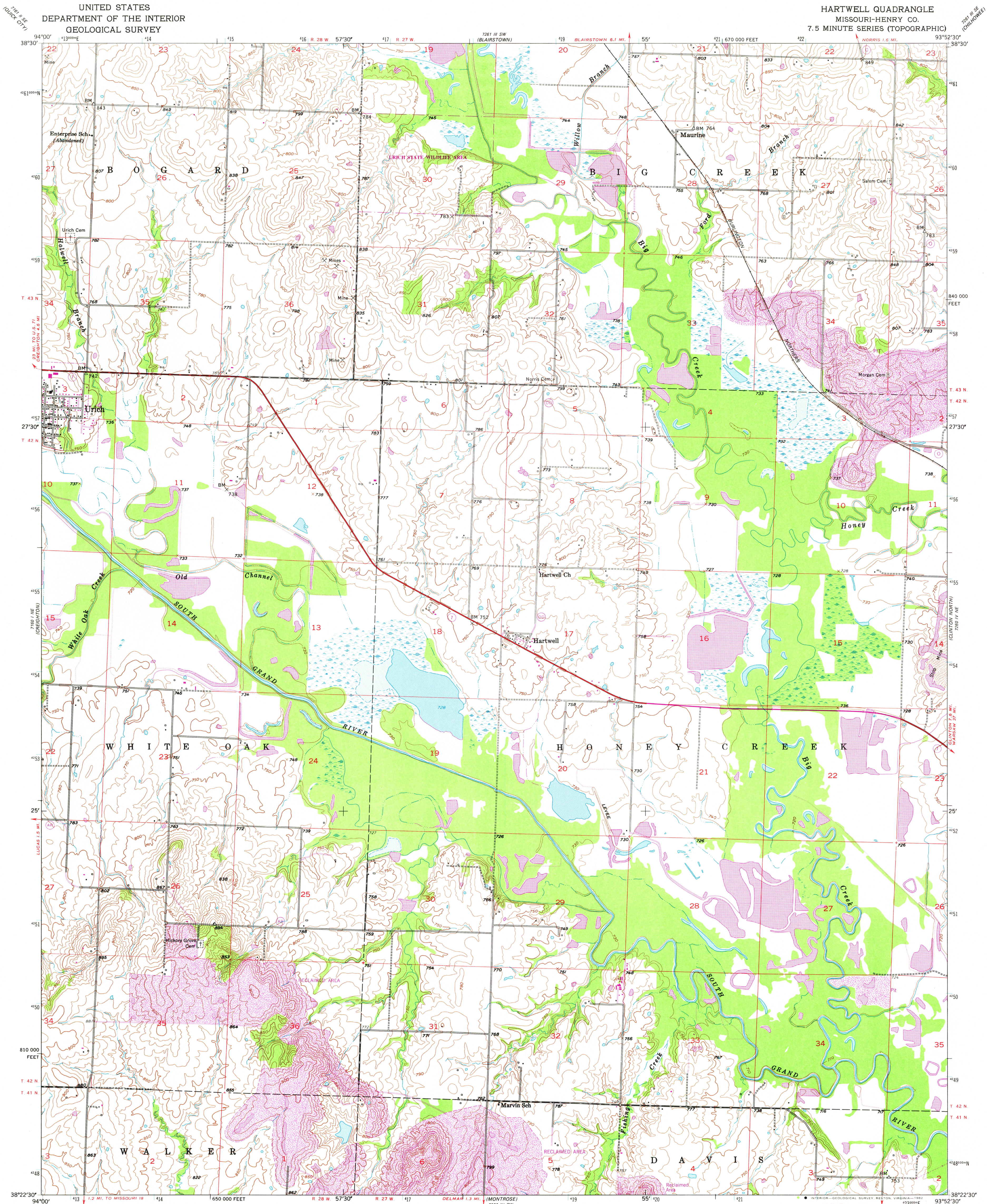
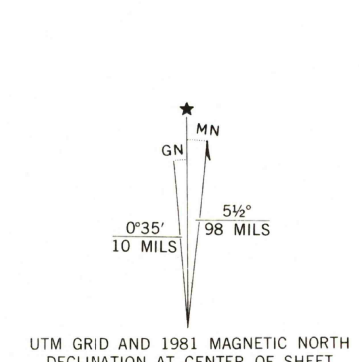


UNITED STATES
DEPARTMENT OF THE INTERIOR
GEOLOGICAL SURVEY

HARTWELL QUADRANGLE
MISSOURI-HENRY CO.
7.5 MINUTE SERIES (TOPOGRAPHIC)



Mapped, edited, and published by the Geological Survey as part of the Department of the Interior program for the development of the Missouri River Basin. Control by USGS and USC&GS. Topography from aerial photographs by photogrammetric methods. Aerial photographs taken 1950. Field check 1953. Polyconic projection. 1927 North American datum 10,000-foot grid based on Missouri coordinate system, west zone. 1000-meter Universal Transverse Mercator grid ticks, zone 15, shown in blue. To place on the predicted North American Datum 1983 move the projection lines 1 meter north and 18 meters east as shown by dashed corner ticks. There may be private inholdings within the boundaries of the National or State reservations shown on this map.



SCALE 1:24 000
CONTOUR INTERVAL 10 FEET
NATIONAL GEODETIC VERTICAL DATUM OF 1929
THIS MAP COMPLIES WITH NATIONAL MAP ACCURACY STANDARDS FOR SALE BY U. S. GEOLOGICAL SURVEY, DENVER, COLORADO 80225, OR RESTON, VIRGINIA 22092, AND THE DIVISION OF GEOLOGY AND LAND SURVEY, MISSOURI DEPARTMENT OF NATURAL RESOURCES, ROLLA, MISSOURI 65401. A FOLDER DESCRIBING TOPOGRAPHIC MAPS AND SYMBOLS IS AVAILABLE ON REQUEST.

ROAD CLASSIFICATION
Heavy-duty 2 LANE 6 LANE Light-duty
Medium-duty 4 LANE 6 LANE Unimproved dirt
U. S. Route State Route
RETURN TO: USGS AND HISTORICAL MAP ARCHIVES
HARTWELL, MO.
N3822.5-W9352.5/7.5
1953
PHOTOREVISED 1981
DMA 7260 IV NW-SERIES V879

APR 21 1982