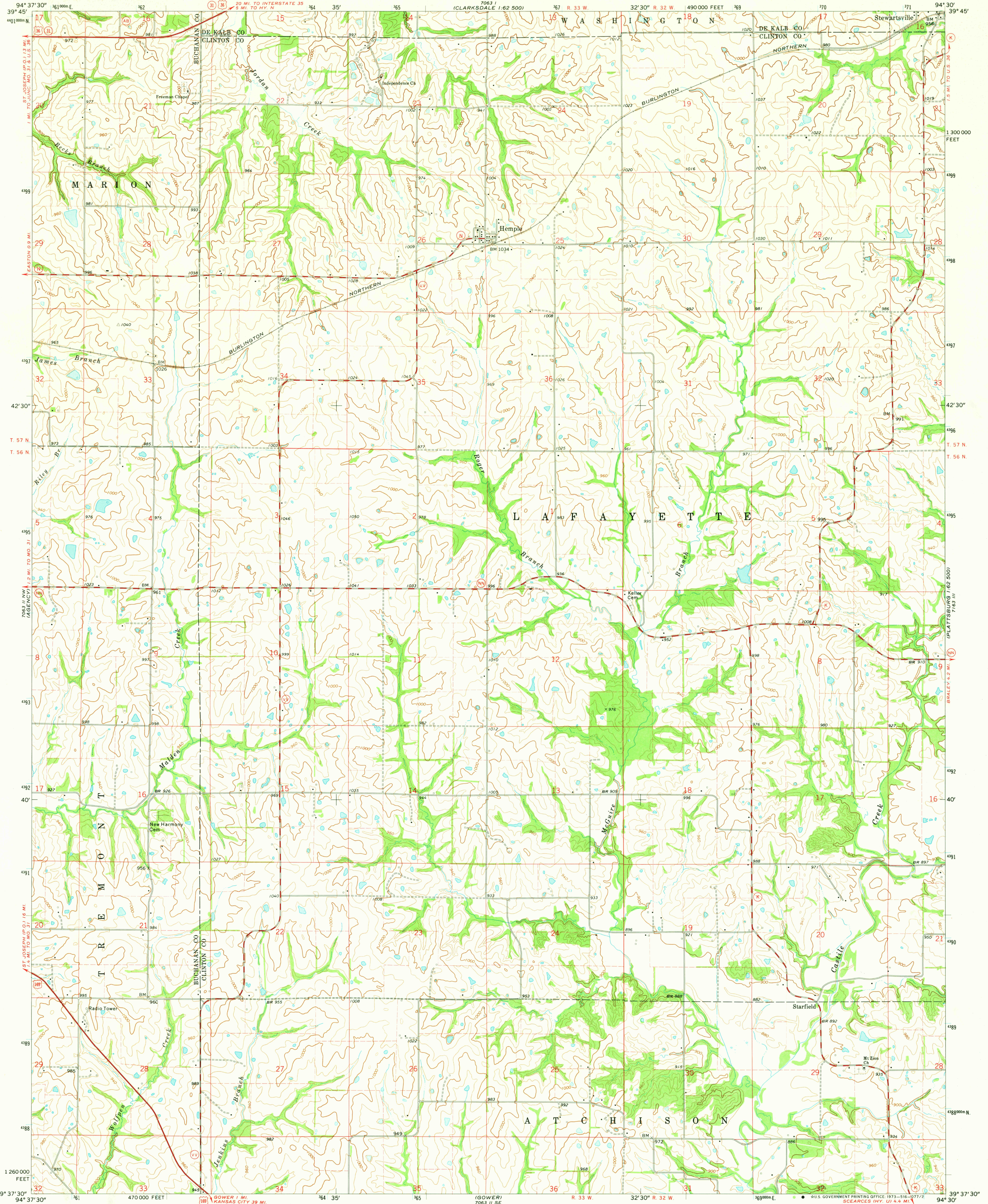


UNITED STATES
DEPARTMENT OF THE INTERIOR
GEOLOGICAL SURVEY

STATE OF MISSOURI
GEOLOGICAL SURVEY AND WATER RESOURCES
WALLACE B. HOWE, STATE GEOLOGIST

HEMPLE QUADRANGLE
MISSOURI
7.5 MINUTE SERIES (TOPOGRAPHIC)
NE/4 GOWER 15' QUADRANGLE

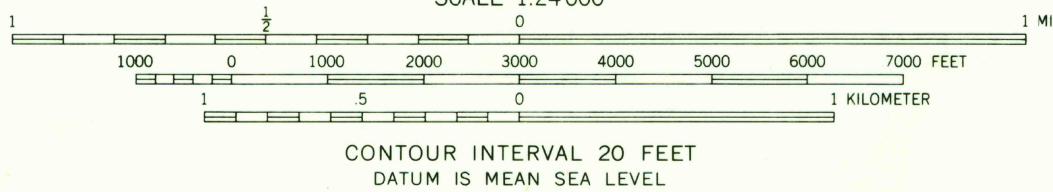
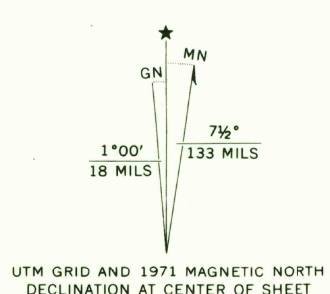


Mapped, edited, and published by the Geological Survey
Control by USGS and USC&GS

Topography by photogrammetric methods from aerial
photographs taken 1969. Field checked 1971

Polyconic projection. 1927 North American datum
10,000-foot grid based on Missouri coordinate system, west zone
1000-meter Universal Transverse Mercator grid ticks,
zone 15, shown in blue

Fine red dashed lines indicate selected fence and field lines where
generally visible on aerial photographs. This information is unchecked



THIS MAP COMPLIES WITH NATIONAL MAP ACCURACY STANDARDS
FOR SALE BY U.S. GEOLOGICAL SURVEY, DENVER, COLORADO 80225, OR WASHINGTON, D. C. 20242
AND BY THE MISSOURI GEOLOGICAL SURVEY, ROLLA, MISSOURI 65401
A FOLDER DESCRIBING TOPOGRAPHIC MAPS AND SYMBOLS IS AVAILABLE ON REQUEST

ROAD CLASSIFICATION
Primary highway, hard surface
Secondary highway, hard surface
Unimproved road
Interstate Route
U. S. Route
State Route



HEMPLE, MO.
NE/4 GOWER 15' QUADRANGLE
N3937.5-W9430/7.5

1971

11 NE-SERIES V879

FEB 20 1973
FEB 20 1972