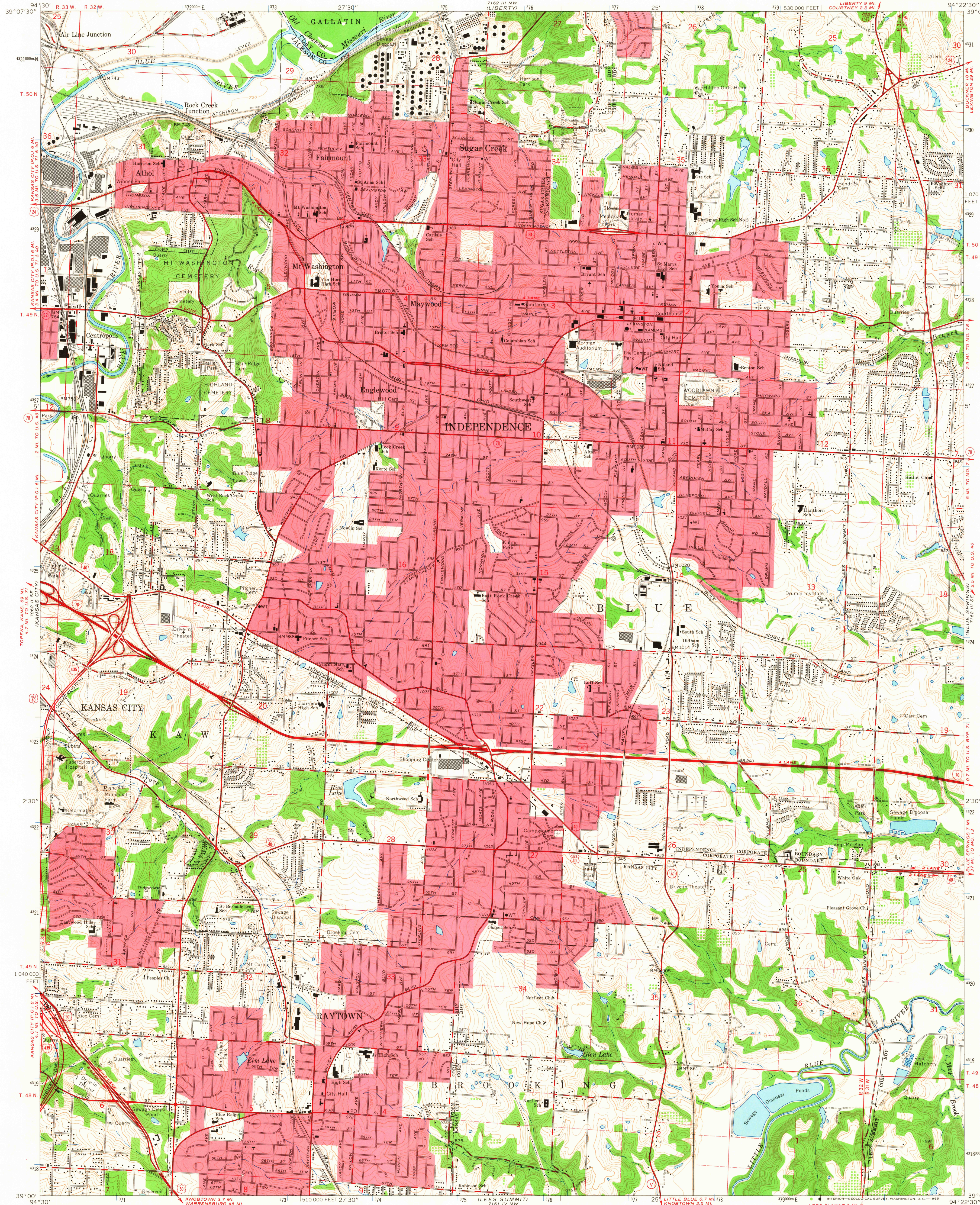


UNITED STATES  
DEPARTMENT OF THE INTERIOR  
GEOLOGICAL SURVEY

INDEPENDENCE QUADRANGLE  
MISSOURI  
7.5 MINUTE SERIES (TOPOGRAPHIC)



Mapped, edited, and published by the Geological Survey  
in cooperation with state of Missouri  
Geological Survey and Water Resources  
Control by USGS, USCGS, and USCE  
Planimetry by photogrammetric methods from aerial photographs  
taken 1955. Topography by planetable surveys 1934  
Revised 1964  
Polyconic projection. 1927 North American datum  
10,000-foot grid based on Missouri coordinate system, west zone  
1000-meter Universal Transverse Mercator grid ticks,  
zone 15, shown in blue  
Red tint indicates areas in which only landmark buildings are shown  
Fine red dashed lines indicate selected fence and field lines where  
generally visible on aerial photographs. This information is unchecked

SCALE 1:24,000  
CONTOUR INTERVAL 10 FEET  
DATUM IS MEAN SEA LEVEL

USGS  
Historical File  
Topographic Division

ROAD CLASSIFICATION  
Heavy-duty ——— Light-duty ———  
Medium-duty ——— Unimproved dirt ———  
Interstate Route U.S. Route State Route

U.S.G.S.

INDEPENDENCE, MO.

N3900—W9422 5/7.5

1964

AMS 7162 III SW—SERIES V879

OCT 14 1965

FILE COPY  
TOPOGRAPHIC DIVISION