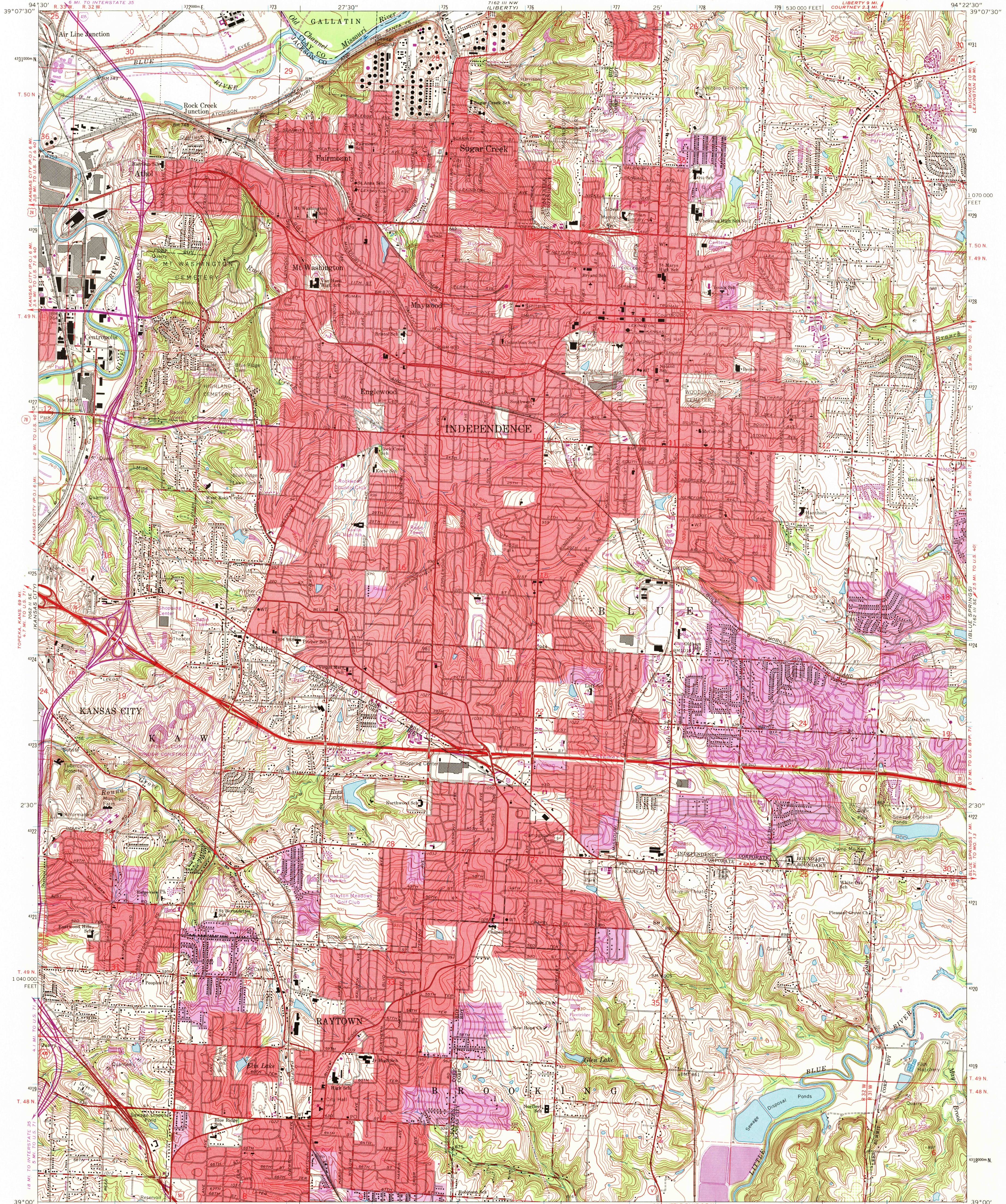
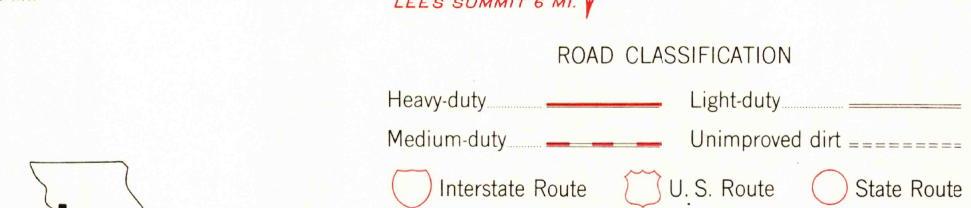
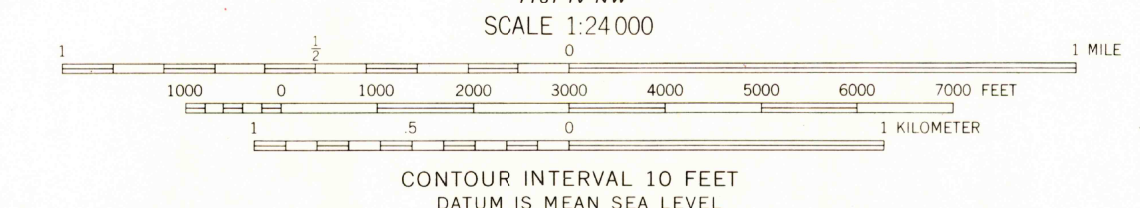
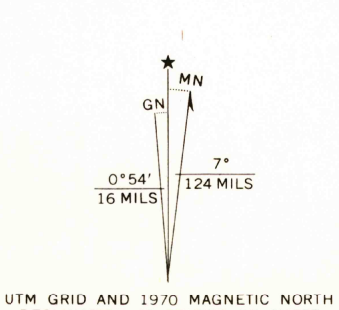


UNITED STATES  
DEPARTMENT OF THE INTERIOR  
GEOLOGICAL SURVEY

INDEPENDENCE QUADRANGLE  
MISSOURI  
7.5 MINUTE SERIES (TOPOGRAPHIC)



Mapped, edited, and published by the Geological Survey  
in cooperation with State of Missouri  
Geological Survey and Water Resources  
Control by USGS, USC&GS, and USCE  
Planimetry by photogrammetric methods from aerial photographs  
taken 1955. Topography by planetable surveys 1934  
Revised 1964  
Polyconic projection. 1927 North American datum  
10,000-foot grid based on Missouri coordinate system, west zone  
1000-meter Universal Transverse Mercator grid ticks,  
zone 15, shown in blue  
Red tint indicates areas in which only landmark buildings are shown  
Fine red dashed lines indicate selected fence and field lines where  
generally visible on aerial photographs. This information is unchecked



THIS MAP COMPLIES WITH NATIONAL MAP ACCURACY STANDARDS  
FOR SALE BY U. S. GEOLOGICAL SURVEY, DENVER, COLORADO 80225, OR WASHINGTON, D. C. 20242  
AND BY THE MISSOURI GEOLOGICAL SURVEY, ROLLA, MISSOURI 65401  
A FOLDER DESCRIBING TOPOGRAPHIC MAPS AND SYMBOLS IS AVAILABLE ON REQUEST

Revisions shown in purple compiled from aerial photographs  
taken 1970. This information not field checked  
Purple tint indicates extension of urban areas

INDEPENDENCE, MO.  
N3900—W9422 5/7-5  
1964  
PHOTOREVISED 1970  
AMS 7162 III SW—SERIES W879

FEB 24 1972  
3470  
USGS  
HISTORICAL FILE  
TOPOGRAPHIC DIVISION