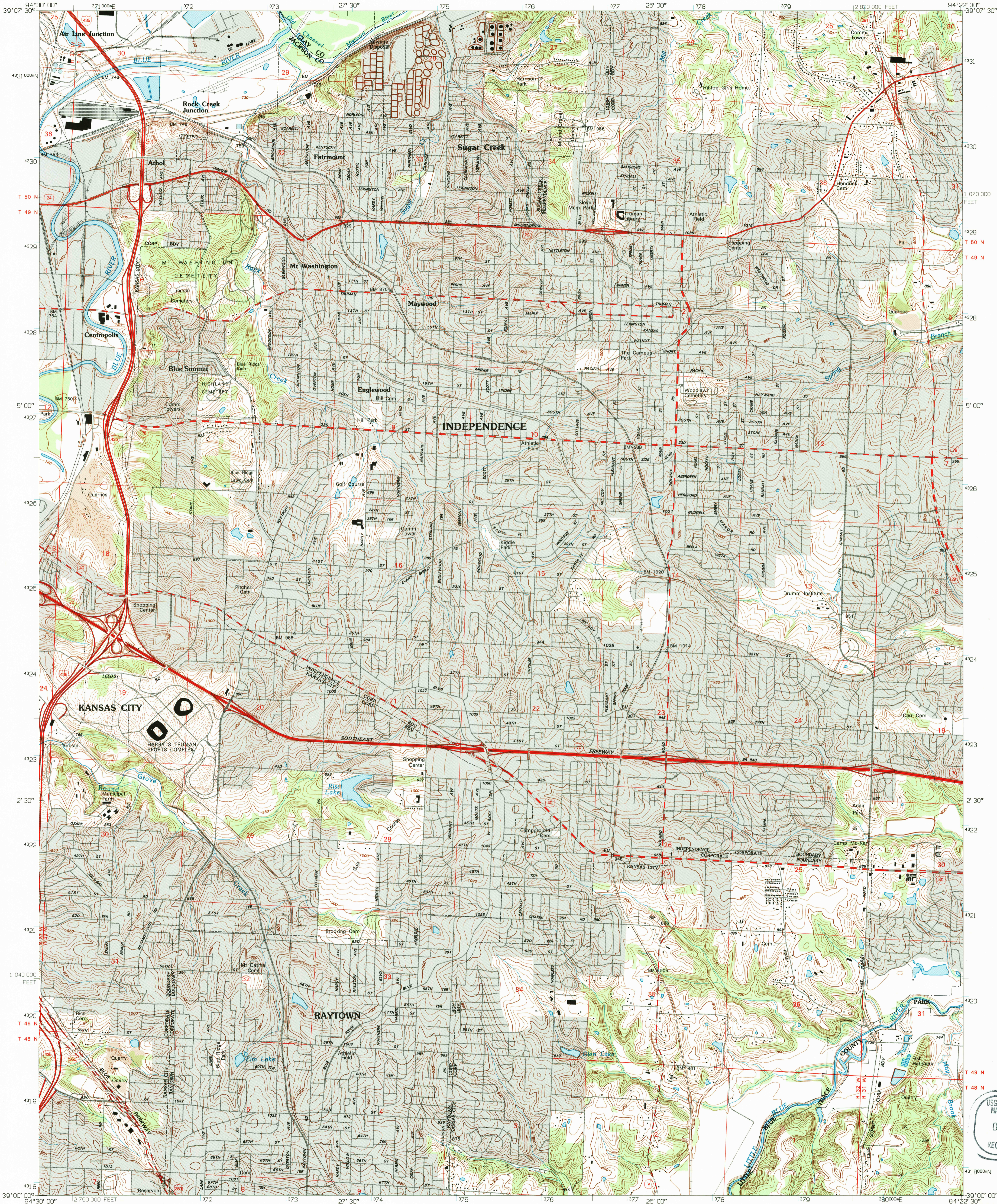


UNITED STATES
DEPARTMENT OF THE INTERIOR
GEOLOGICAL SURVEY

INDEPENDENCE QUADRANGLE
MISSOURI
7.5 MINUTE SERIES (TOPOGRAPHIC)



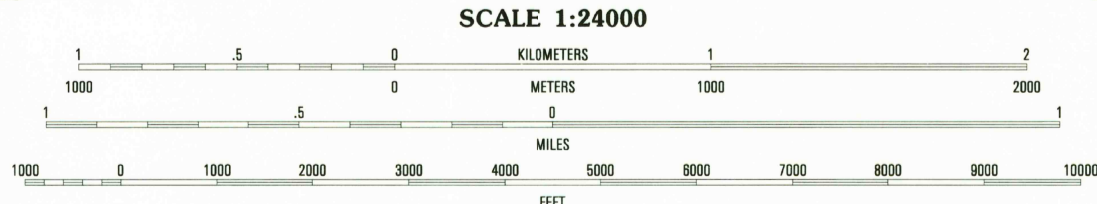
Produced by the United States Geological Survey
in cooperation with State of Missouri Geological Survey
and Water Resources

Planimetry by photogrammetric methods from imagery dated 1955
Topography by planimetric surveys 1934. Revised from imagery
dated 1963. Field checked 1964. Revised from imagery dated
1990. PLSS and survey control current as of 1974. Map edited
1995. Contours not revised. Contours that conflict with
revised planimetry are dashed

North American Datum of 1983 (NAD 83). Projection and
blue 1000-meter ticks: Universal Transverse Mercator, zone 15
10 000-foot ticks: Missouri Coordinate System of 1983 (west zone)

North American Datum of 1927 (NAD 27) is shown by dashed
corner ticks. The values of the shift between NAD 83 and NAD 27
for 7.5-minute intersections are obtainable from National Geodetic
Survey NADCON software

UTM GRID AND 1995 MAGNETIC NORTH
DECLINATION AT CENTER OF SHEET



THIS MAP COMPLIES WITH NATIONAL MAP ACCURACY STANDARDS
FOR SALE BY U.S. GEOLOGICAL SURVEY, DENVER, COLORADO 80225, OR RESTON, VIRGINIA 22092
AND DIVISION OF GEOLOGY AND LAND SURVEY
MISSOURI DEPARTMENT OF NATURAL RESOURCES, ROLLA, MISSOURI 65401
A FOLDER DESCRIBING TOPOGRAPHIC MAPS AND SYMBOLS IS AVAILABLE ON REQUEST

ROAD CLASSIFICATION

Primary highway
hard surface
Secondary highway
hard surface
Unimproved road

Light-duty road, hard or
improved surface

Interstate Route U.S. Route State Route

QUADRANGLE LOCATION

1	2	3
4	5	6
7	8	

1 North Kansas City
2 Liberty
3 Missouri City
4 Kansas City
5 Blue Springs
6 Grandview
7 Lees Summit
8 Lake Jacomo

INDEPENDENCE, MO
39094-A4-TF-024
1990
DMA 7162 III SW - SERIES V879

USGS AND HISTORICAL
MAP ARCHIVES
OCT 06 1995
REC'D FILE COPY

ISBN 0-607-00945-0
9 780607 009458