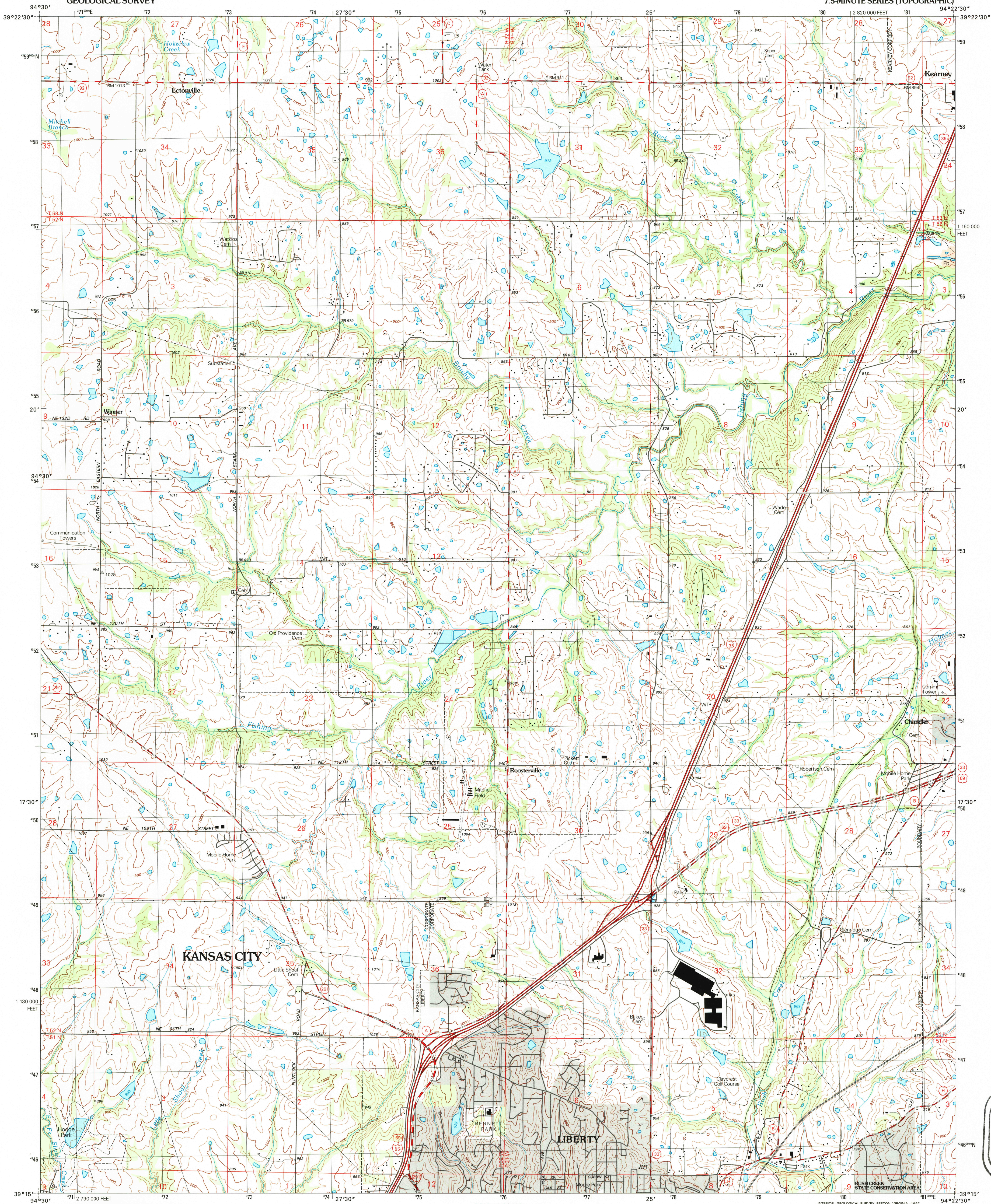


UNITED STATES
DEPARTMENT OF THE INTERIOR
GEOLOGICAL SURVEY

KEARNEY SW QUADRANGLE
MISSOURI-CLAY CO.
7.5-MINUTE SERIES (TOPOGRAPHIC)



Produced by the United States Geological Survey
Compiled by photogrammetric methods from imagery dated 1970
Field checked 1971. Revised from imagery dated 1990
PLSS and survey control current as of 1971. Map edited 1996
Contours not revised
North American Datum of 1983 (NAD 83). Projection and
1:100,000-scale grid: Universal Transverse Mercator, zone 15
10,000-foot ticks. Missouri coordinate system, zone 15
North American Datum of 1927 (NAD 27) is shown by dashed
corner ticks. The values of the shift between NAD 83 and NAD 27
for 7.5-minute intersections are obtainable from National Geodetic
Survey NADCON software
There may be private inholdings within the boundaries of
the National or State reservations shown on this map

UTM GRID AND 1996 MAGNETIC NORTH
DECLINATION AT CENTER OF SHEET

SCALE 1:24,000
CONTOUR INTERVAL 20 FEET
NATIONAL GEODETIC VERTICAL DATUM OF 1929

ROAD CLASSIFICATION
Primary highway
hard surface
Secondary highway
hard surface
Unimproved road
Interstate Route
U.S. Route
State Route

QUADRANGLE LOCATION
1 2 3 1 Smithville
2 2 Aley
3 3 Holt
4 4 Nashua
5 5 Kearney
6 6 North Kansas City
7 7 Liberty
8 8 Missouri City

KEARNEY SW, MO
39094-C4-TF-024
1990
DMA 7162 IV SW-SERIES V879

U.S. GEOLOGICAL SURVEY
MISSOURI-CLAY CO.
7.5-MINUTE SERIES (TOPOGRAPHIC)
KEARNEY SW QUADRANGLE
1990
FILE COPY

470458109080
9 780607 657047