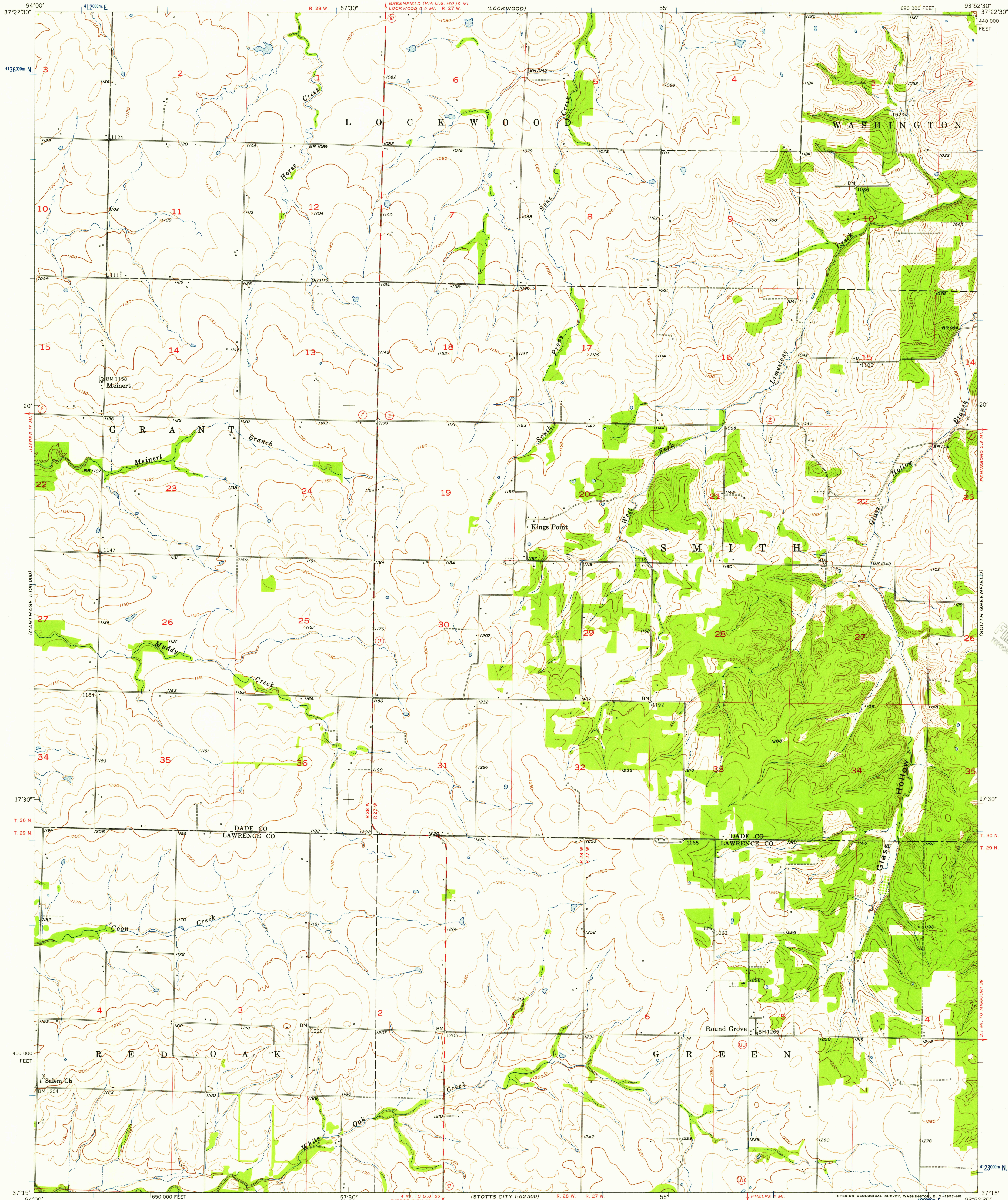


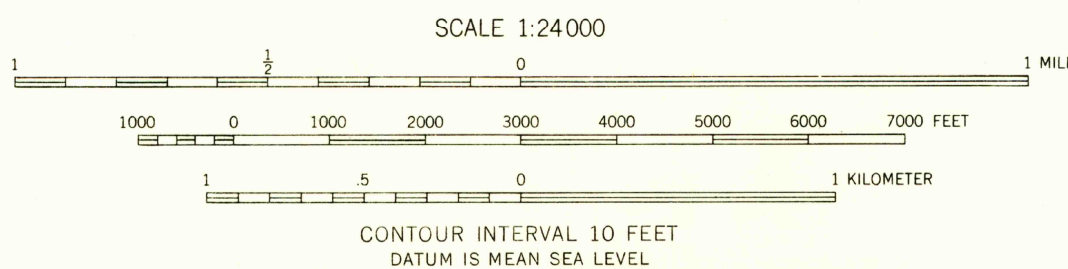
UNITED STATES  
DEPARTMENT OF THE INTERIOR  
GEOLOGICAL SURVEY

KINGS POINT QUADRANGLE  
MISSOURI  
7.5 MINUTE SERIES (TOPOGRAPHIC)



Mapped, edited, and published by the Geological Survey as part of the Department of the Interior program for the development of the Missouri River Basin Control by USGS and USC&GS  
Topography from aerial photographs by photogrammetric methods  
Aerial photographs taken 1950. Field check 1956  
Polyconic projection. 1927 North American datum  
10,000-foot grid based on Missouri coordinate system, west zone  
1000-meter Universal Transverse Mercator grid ticks, zone 15, shown in blue

TRUE NORTH  
MAGNETIC NORTH  
APPROXIMATE MEAN DECLINATION, 1956



USGS  
Historical File  
Topographic Division  
MISSOURI  
QUADRANGLE LOCATION

ROAD CLASSIFICATION  
Medium-duty ——— Light-duty ———  
Unimproved dirt ———  
State Route —○—

U.S.G.S.  
FILE COPY  
TOPOGRAPHIC DIVISION

KINGS POINT, MO.  
N37°15'—W93°52'5"/7.5  
1956

THIS MAP COMPLIES WITH NATIONAL MAP ACCURACY STANDARDS  
FOR SALE BY U. S. GEOLOGICAL SURVEY, DENVER 2, COLORADO OR WASHINGTON 25, D. C.  
AND BY THE MISSOURI GEOLOGICAL SURVEY, ROLLA, MISSOURI  
A FOLDER DESCRIBING TOPOGRAPHIC MAPS AND SYMBOLS IS AVAILABLE ON REQUEST

APR 19 1957

3105