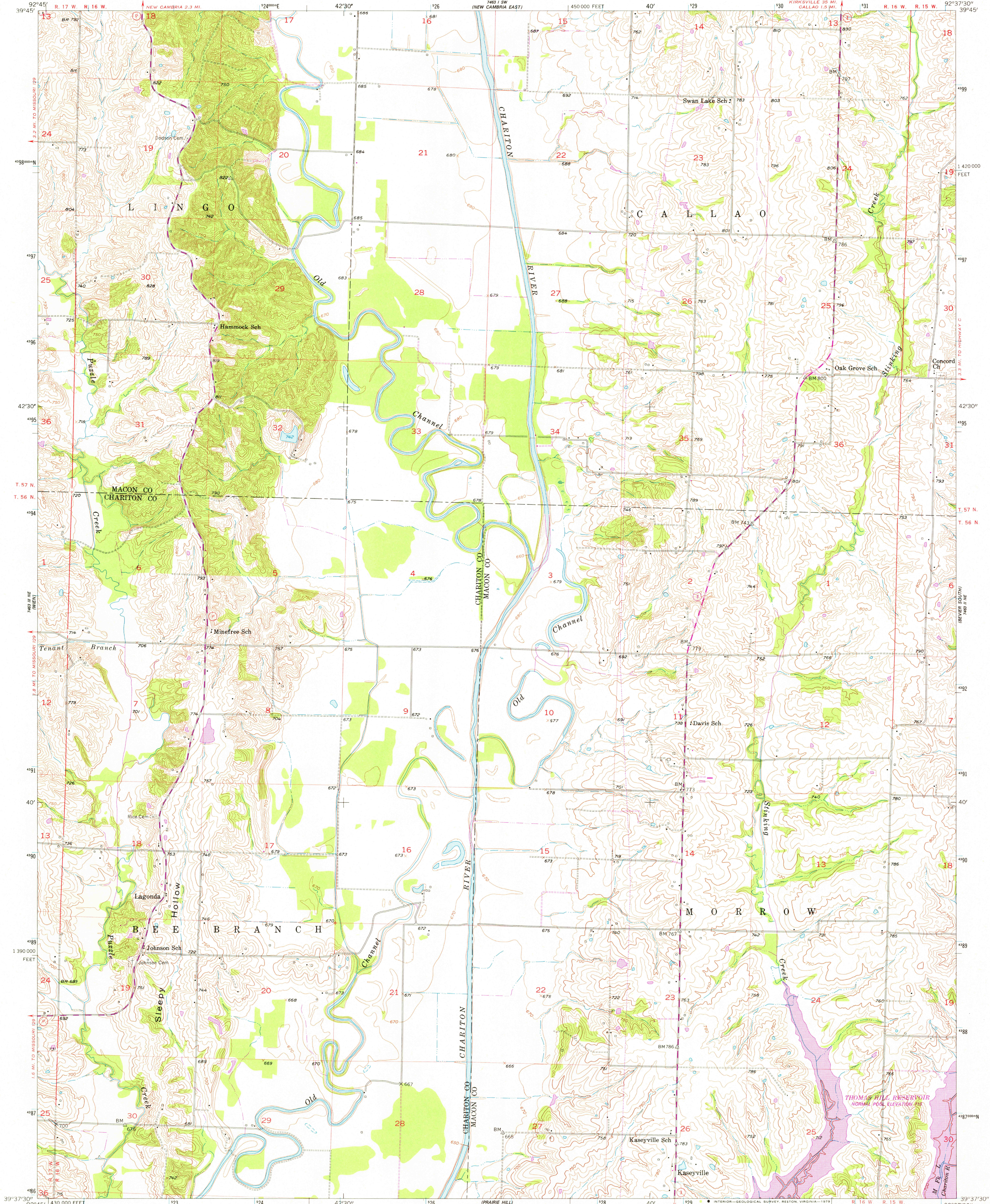


UNITED STATES  
DEPARTMENT OF THE INTERIOR  
GEOLOGICAL SURVEY



LAGONDA QUADRANGLE  
MISSOURI  
7.5 MINUTE SERIES (TOPOGRAPHIC)

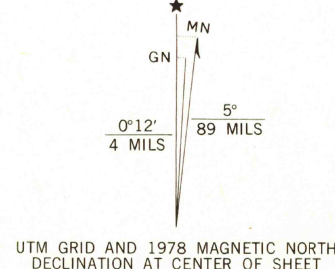


Mapped, edited, and published by the Geological Survey  
as part of the Department of the Interior program  
for the development of the Missouri River Basin  
Control by USGS and USC&GS

Topography from aerial photographs by photogrammetric methods  
Aerial photographs taken 1949. Field check 1953

Polyconic projection. 1927 North American datum  
10,000-foot grid based on Missouri coordinate system,  
central zone  
1000-meter Universal Transverse Mercator grid ticks,  
zone 15, shown in blue

Revisions shown in purple compiled from aerial photographs taken  
1977. Map edited 1978. This information not field checked



SCALE 1:24 000  
1 000 000 2000 3000 4000 5000 6000 7000 FEET  
1 KILOMETER  
CONTOUR INTERVAL 10 FEET  
NATIONAL GEODETIC VERTICAL DATUM OF 1929

THIS MAP COMPLIES WITH NATIONAL MAP ACCURACY STANDARDS  
FOR SALE BY U.S. GEOLOGICAL SURVEY, DENVER, COLORADO 80225, OR RESTON, VIRGINIA 22092  
AND THE DIVISION OF RESEARCH AND TECHNICAL INFORMATION  
MISSOURI DEPARTMENT OF NATURAL RESOURCES, ROLLA, MISSOURI 65401  
A FOLDER DESCRIBING TOPOGRAPHIC MAPS AND SYMBOLS IS AVAILABLE ON REQUEST

ROAD CLASSIFICATION  
Primary highway, hard surface  
Secondary highway, hard surface  
Light-duty road, hard or improved surface  
Unimproved road  
Interstate Route  
U.S. Route  
State Route



USGS  
Historical File  
Topographic Division

LAGONDA, MO.  
N 3937.5 - W 9237.5/7.5

1953  
PHOTOREVISED 1978  
AMS 7465 II NW - SERIES 1679

JUN 18 1979

3000