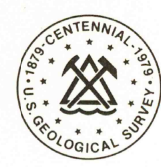


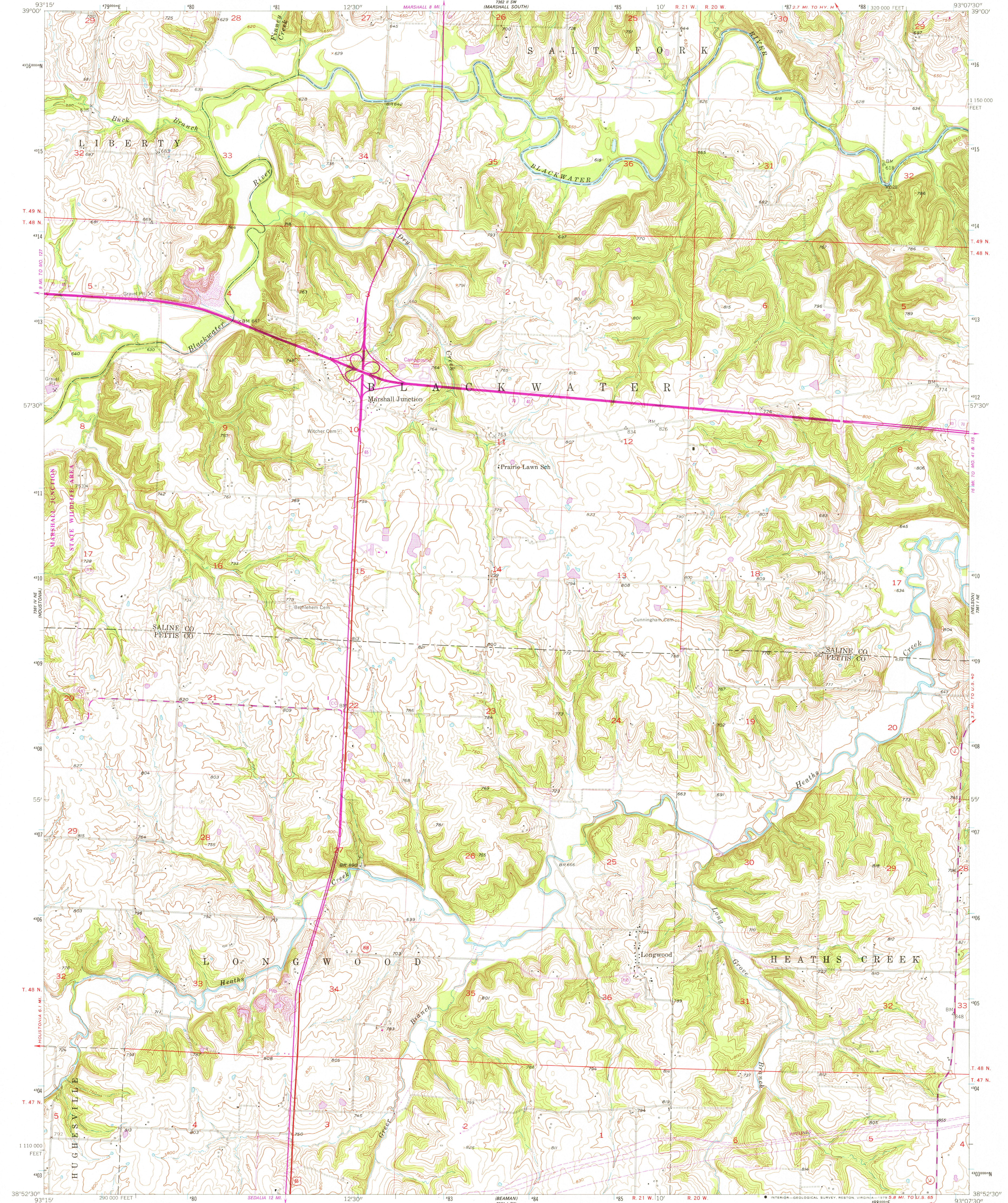
(HUGHESVILLE)  
7861 I SW

UNITED STATES  
DEPARTMENT OF THE INTERIOR  
GEOLOGICAL SURVEY

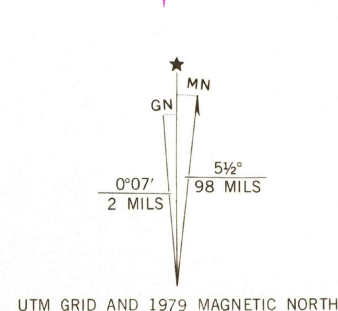


LONGWOOD QUADRANGLE  
MISSOURI  
7.5 MINUTE SERIES (TOPOGRAPHIC)

(HUGHESVILLE)  
7861 I SW



Mapped, edited, and published by the Geological Survey as part of the Department of the Interior program for the development of the Missouri River Basin.  
Control by USGS and USC&GS  
Topography from aerial photographs by multiplex methods  
Aerial photographs taken 1950. Field check 1953  
Polyconic projection. 1927 North American datum  
10,000-foot grid based on Missouri coordinate system, central zone  
1000-meter Universal Transverse Mercator grid ticks, zone 15, shown in blue  
There may be private inholdings within the boundaries of the National or State reservations shown on this map  
Revisions shown in purple compiled from aerial photographs taken 1977. Map edited 1979. This information not field checked



SCALE 1:24 000  
1 1000 0 1000 2000 3000 4000 5000 6000 7000 FEET  
1 5 10 15 20 25 30 35 40 45 50 METERS  
CONTOUR INTERVAL 10 FEET  
NATIONAL GEODETIC VERTICAL DATUM OF 1929  
THIS MAP COMPLIES WITH NATIONAL MAP ACCURACY STANDARDS  
FOR SALE BY U. S. GEOLOGICAL SURVEY, DENVER, COLORADO 80225, OR RESTON, VIRGINIA 22092  
AND THE DIVISION OF RESEARCH AND TECHNICAL INFORMATION  
MISSOURI DEPARTMENT OF NATURAL RESOURCES, ROLLA, MISSOURI 65401  
A FOLDER DESCRIBING TOPOGRAPHIC MAPS AND SYMBOLS IS AVAILABLE ON REQUEST



ROAD CLASSIFICATION  
Heavy-duty 4 LANE 6 LANE Light-duty  
Medium-duty 4 LANE 6 LANE Unimproved dirt  
U. S. Route State Route Interstate Route  
USGS Historical File Topographic Division  
JUN 18 1979  
LONGWOOD, MO.  
N 3652.5 - W 9307.5 / 7.5  
1953  
PHOTOREVISED 1979  
AMS 7361 I NW-SERIES V879