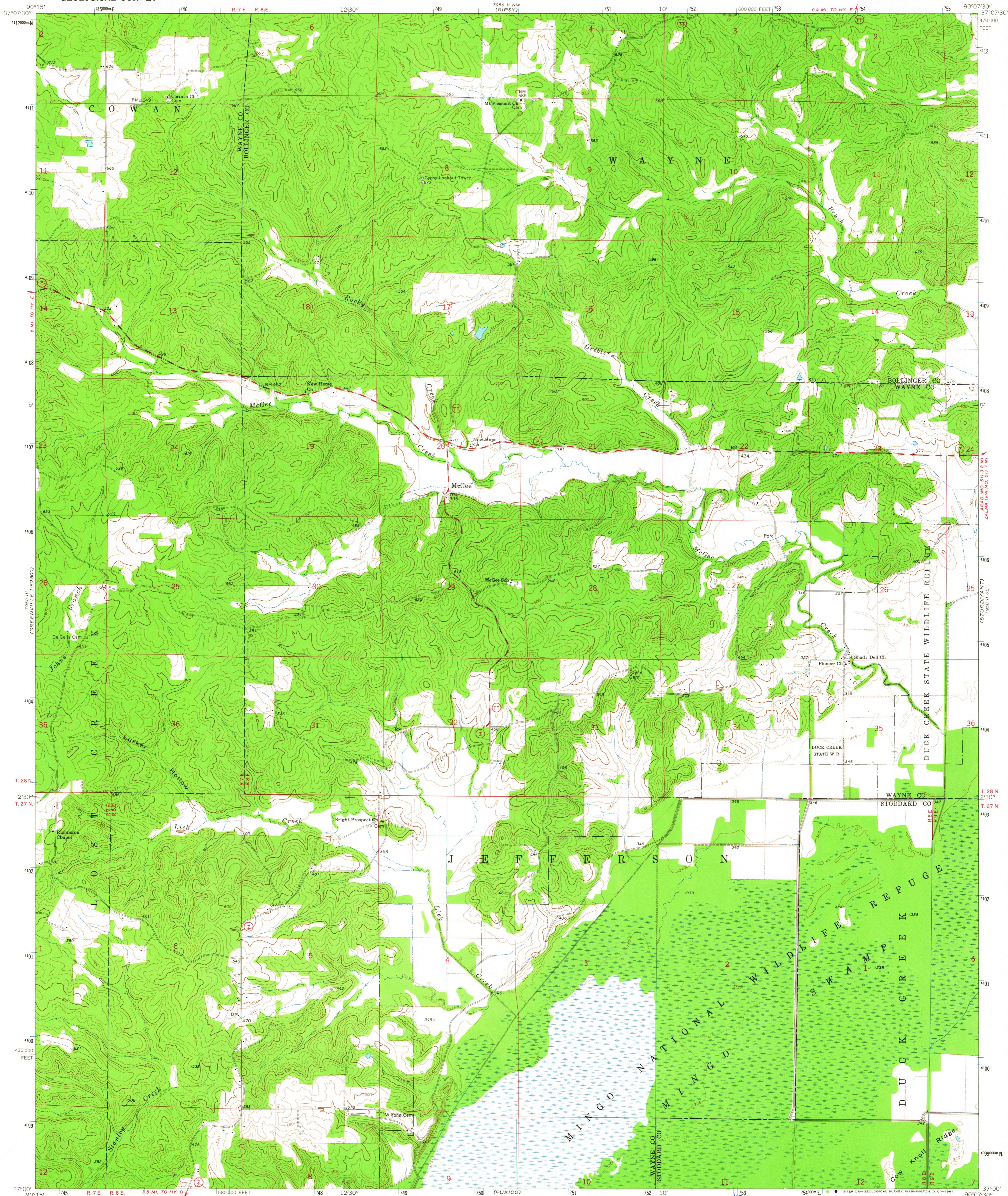
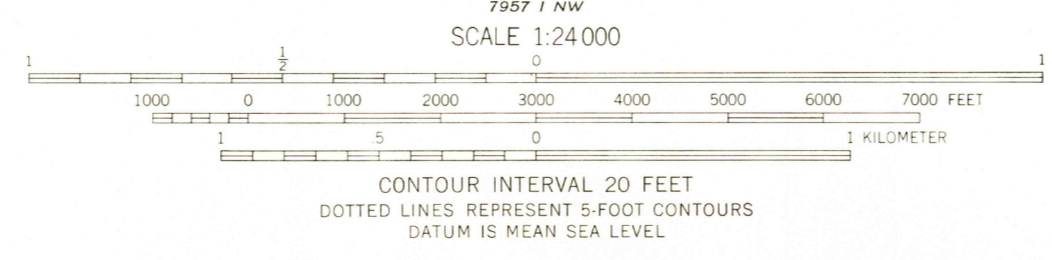
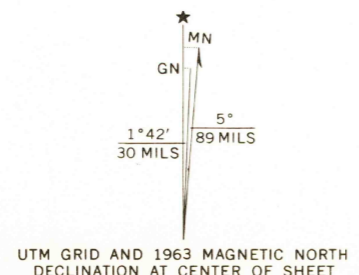


UNITED STATES
DEPARTMENT OF THE INTERIOR
GEOLOGICAL SURVEY

MC GEE QUADRANGLE
MISSOURI
7.5 MINUTE SERIES (TOPOGRAPHIC)
SW/4 ZALMA 15' QUADRANGLE



Mapped, edited, and published by the Geological Survey
Control by USGS and USC&GS
Topography by photogrammetric methods from aerial
photographs taken 1962 and planetable surveys 1963
Polyconic projection. 1927 North American datum
10,000-foot grid based on Missouri coordinate system, east zone
1000-meter Universal Transverse Mercator grid ticks,
zone 15, shown in blue
Fine red dashed lines indicate selected fence and field lines where
generally visible on aerial photographs. This information is unchecked



THIS MAP COMPLIES WITH NATIONAL MAP ACCURACY STANDARDS
FOR SALE BY U.S. GEOLOGICAL SURVEY, DENVER 25, COLORADO OR WASHINGTON 25, D. C.
AND BY THE MISSOURI GEOLOGICAL SURVEY, ROLLA, MISSOURI
A FOLDER DESCRIBING TOPOGRAPHIC MAPS AND SYMBOLS IS AVAILABLE ON REQUEST



ROAD CLASSIFICATION
Medium-duty ——— Light-duty ———
Unimproved dirt ———
State Route —○—

MC GEE, MO.
SW/4 ZALMA 15' QUADRANGLE
N3700—W9007.5/7.5
1963

AMS 7958 II SW—SERIES V879

2125
JUN 25 1963