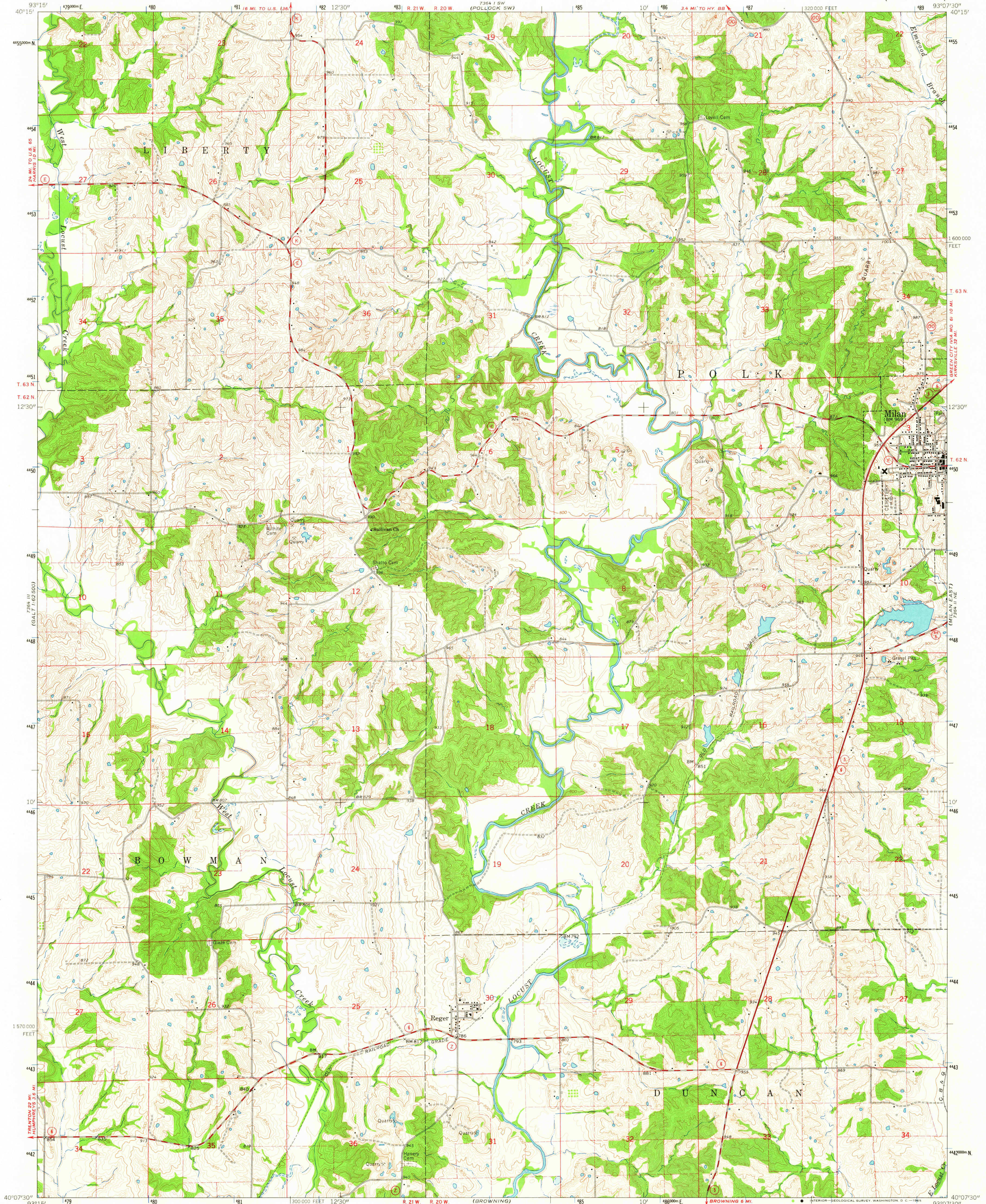


Zone 14, 95  
(NAD83)

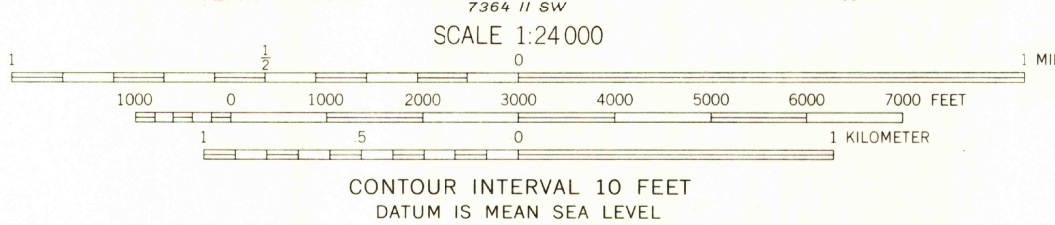
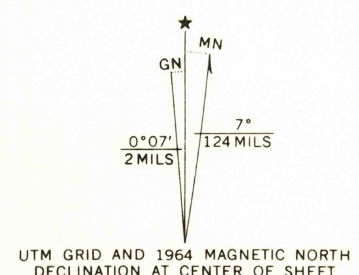
UNITED STATES  
DEPARTMENT OF THE INTERIOR  
GEOLOGICAL SURVEY

MILAN WEST QUADRANGLE  
MISSOURI-SULLIVAN CO.  
7.5 MINUTE SERIES (TOPOGRAPHIC)

Zone 14, 95  
(NAD83)



Mapped, edited, and published by the Geological Survey  
Control by USGS and USC&GS  
Topography by photogrammetric methods from aerial  
photographs taken 1960. Field checked 1964  
Polyconic projection. 1927 North American datum  
10,000-foot grid based on Missouri coordinate system, central zone  
1000-meter Universal Transverse Mercator grid ticks,  
zone 15, shown in blue  
Fine red dashed lines indicate selected fence and field lines where  
generally visible on aerial photographs. This information is unchecked



ROAD CLASSIFICATION  
Heavy-duty ——— Light-duty ———  
Medium-duty ——— Unimproved dirt ———  
State Route —○—

USGS  
Historical File  
Topographic Division  
FILE COPY  
TOPOGRAPHIC DIVISION

MILAN WEST, MO.  
N4007.5—W9307.5/7.5  
1964  
AMS 7364 II NW—SERIES V879

2700  
FEB 3 1964