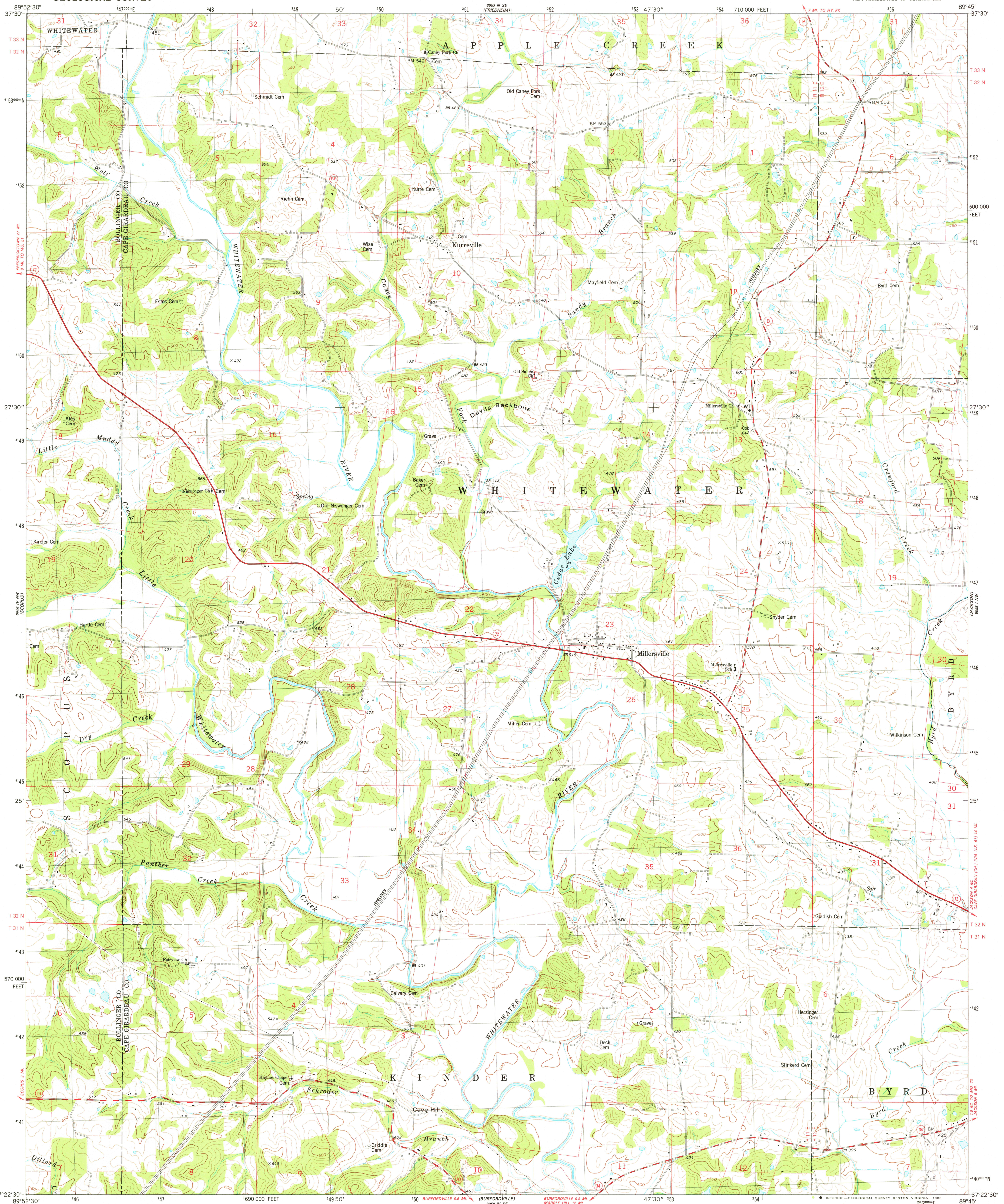


UNITED STATES
DEPARTMENT OF THE INTERIOR
GEOLOGICAL SURVEY

MILLERSVILLE QUADRANGLE
MISSOURI
7.5 MINUTE SERIES (TOPOGRAPHIC)
NE/4 MARBLE HILL 15' QUADRANGLE



Mapped, edited, and published by the Geological Survey

Control by USGS and NOS/NOAA

Topography by photogrammetric methods from aerial photographs

taken 1974. Field checked 1976. Map edited 1980

Projection and 10,000-foot grid ticks: Missouri coordinate

system, east zone (transverse Mercator)

1000-meter Universal Transverse Mercator grid, zone 16

1927 North American Datum

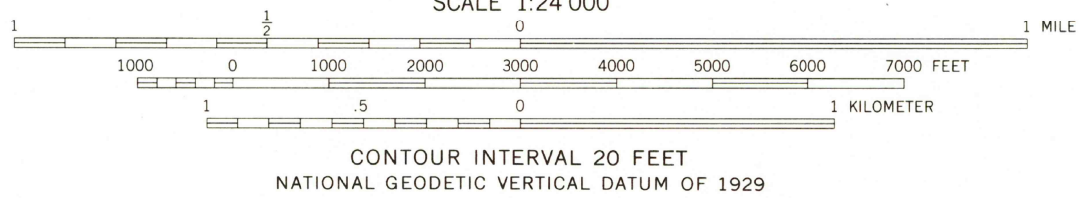
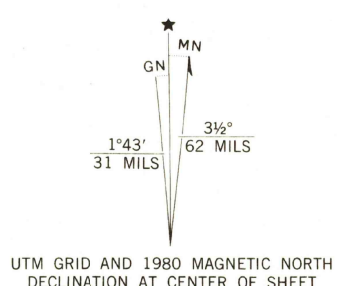
To place on the predicted North American Datum 1983

move the projection lines 3 meters south and

8 meters east as shown by dashed corner ticks

Fine red dashed lines indicate selected fence and field lines where

generally visible on aerial photographs. This information is unchecked



THIS MAP COMPLIES WITH NATIONAL MAP ACCURACY STANDARDS
FOR SALE BY U. S. GEOLOGICAL SURVEY, DENVER, COLORADO 80225, OR RESTON, VIRGINIA 22092
AND THE DIVISION OF GEOLOGY AND LAND SURVEY
MISSOURI DEPARTMENT OF NATURAL RESOURCES, ROLLA, MISSOURI 65401
A FOLDER DESCRIBING TOPOGRAPHIC MAPS AND SYMBOLS IS AVAILABLE ON REQUEST



ROAD CLASSIFICATION
Primary highway, hard surface
Secondary highway, hard surface
Unimproved road
Interstate Route
U. S. Route
State Route
Light-duty road, hard or improved surface

USGS
Historical File
Topographic Division

MILLERSVILLE, MO.
NE/4 MARBLE HILL 15' QUADRANGLE
N3722.5-W8945/7.5

1980

DMA 8058 IV NE-SERIES V879

AUG 11 1980