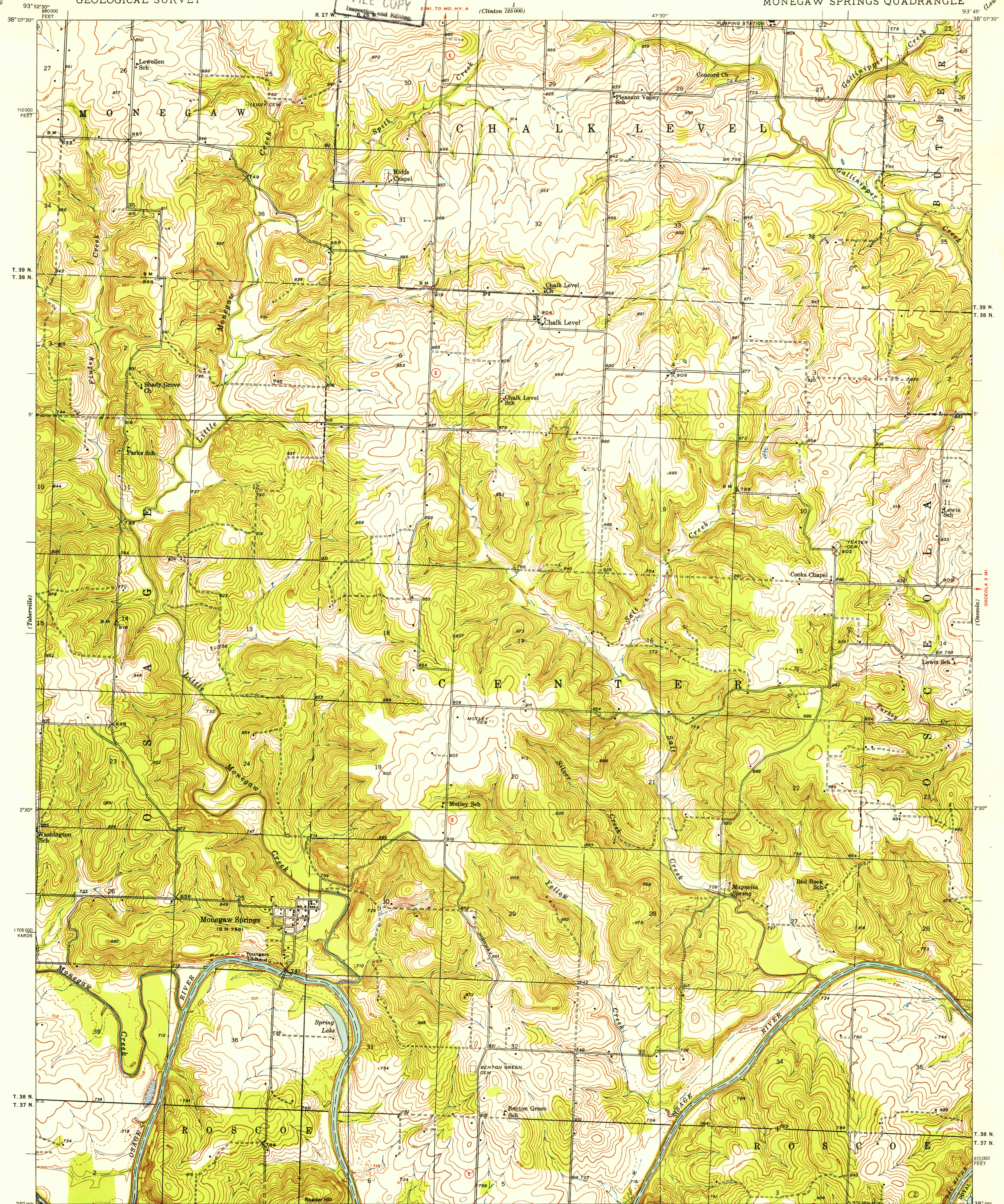


UNITED STATES  
DEPARTMENT OF THE INTERIOR  
GEOLOGICAL SURVEY

STATE OF MISSOURI  
GEOLOGICAL SURVEY AND WATER RESOURCES

MISSOURI  
(ST. CLAIR COUNTY)  
MONEGAW SPRINGS QUADRANGLE

FILE COPY  
Inspection and Editing



Glenn S. Smith, Division Engineer  
Topography by C. A. Killian, W. D. Phillips,  
F. Vincent, and C. E. Goss  
Surveyed in 1938

ROAD CLASSIFICATION  
Heavy-duty ——— 4 LANE 6 LANE Light-duty ———  
Medium-duty ——— 4 LANE 6 LANE Unimproved dirt ———

U. S. Route State Route

TRUE NORTH  
MAGNETIC NORTH  
APPROXIMATE MEAN  
DECLINATION, 1938

Scale: 24000  
1 inch = 2 miles  
1 centimeter = 2 kilometers

Contour interval 10 feet  
5 foot contours added in dashed lines  
Datum is mean sea level

FOR SALE BY U. S. GEOLOGICAL SURVEY, FEDERAL CENTER, DENVER, COLORADO OR WASHINGTON 25, D. C.  
A FOLDER DESCRIBING TOPOGRAPHIC MAPS AND SYMBOLS IS AVAILABLE ON REQUEST

U. S. G. S.  
FILE COPY  
Inspection and Editing

MONEGAW SPRINGS, MO.  
1938  
N 3800—W 9345/7.5