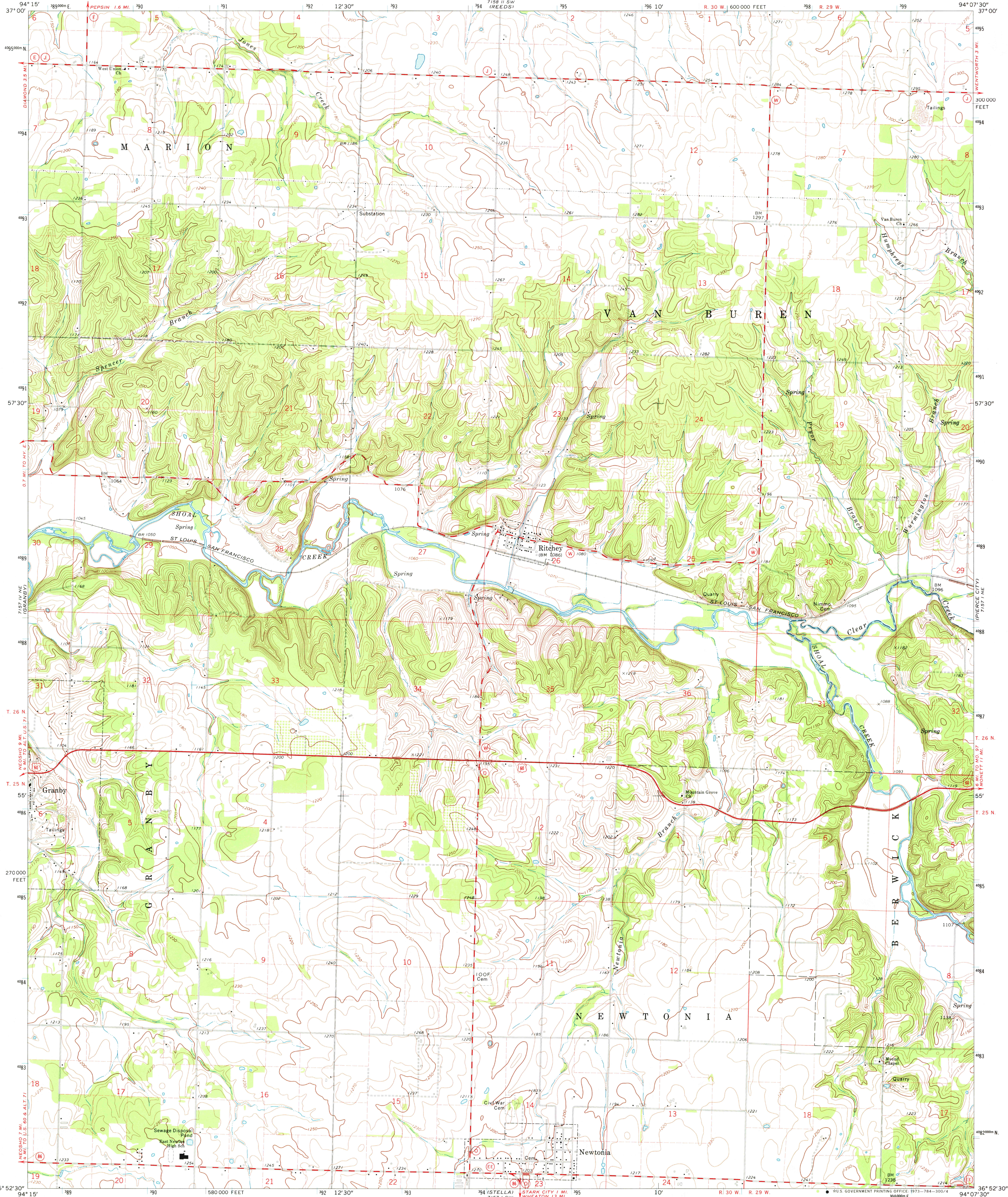


UNITED STATES
DEPARTMENT OF THE INTERIOR
GEOLOGICAL SURVEY

NEWTONIA QUADRANGLE
MISSOURI—NEWTON CO.
7.5 MINUTE SERIES (TOPOGRAPHIC)
NW 4 RITCHIEY 15' QUADRANGLE



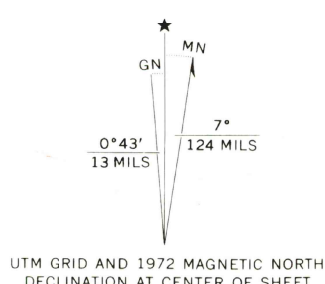
Mapped, edited, and published by the Geological Survey

Control by USGS and USC&GS

Topography by photogrammetric methods from aerial
photographs taken 1970. Field checked 1972

Polyconic projection. 1927 North American datum
10,000-foot grid based on Missouri coordinate system, west zone
1000-meter Universal Transverse Mercator grid ticks,
zone 15, shown in blue

Fine red dashed lines indicate selected fence and field lines where
generally visible on aerial photographs. This information is unchecked



SCALE 1:24,000

CONTOUR INTERVAL 10 FEET
DATUM IS MEAN SEA LEVEL

THIS MAP COMPLIES WITH NATIONAL MAP ACCURACY STANDARDS
FOR SALE BY U. S. GEOLOGICAL SURVEY, DENVER, COLORADO 80225, OR WASHINGTON, D. C. 20242
AND BY THE MISSOURI GEOLOGICAL SURVEY, ROLLA, MISSOURI 65401
A FOLDER DESCRIBING TOPOGRAPHIC MAPS AND SYMBOLS IS AVAILABLE ON REQUEST



ROAD CLASSIFICATION
Primary highway, hard surface ———— improved surface
Secondary highway, hard surface ———— Unimproved road
Interstate Route ———— U. S. Route ———— State Route

USGS
Historical File
Topographic Division

NEWTONIA, MO.
NW 4 RITCHIEY 15' QUADRANGLE
N3652.5—W9407.5/7.5
1972

AMS 7157 1 NW—SERIES W979

3000
MAY 18 1974
50 years