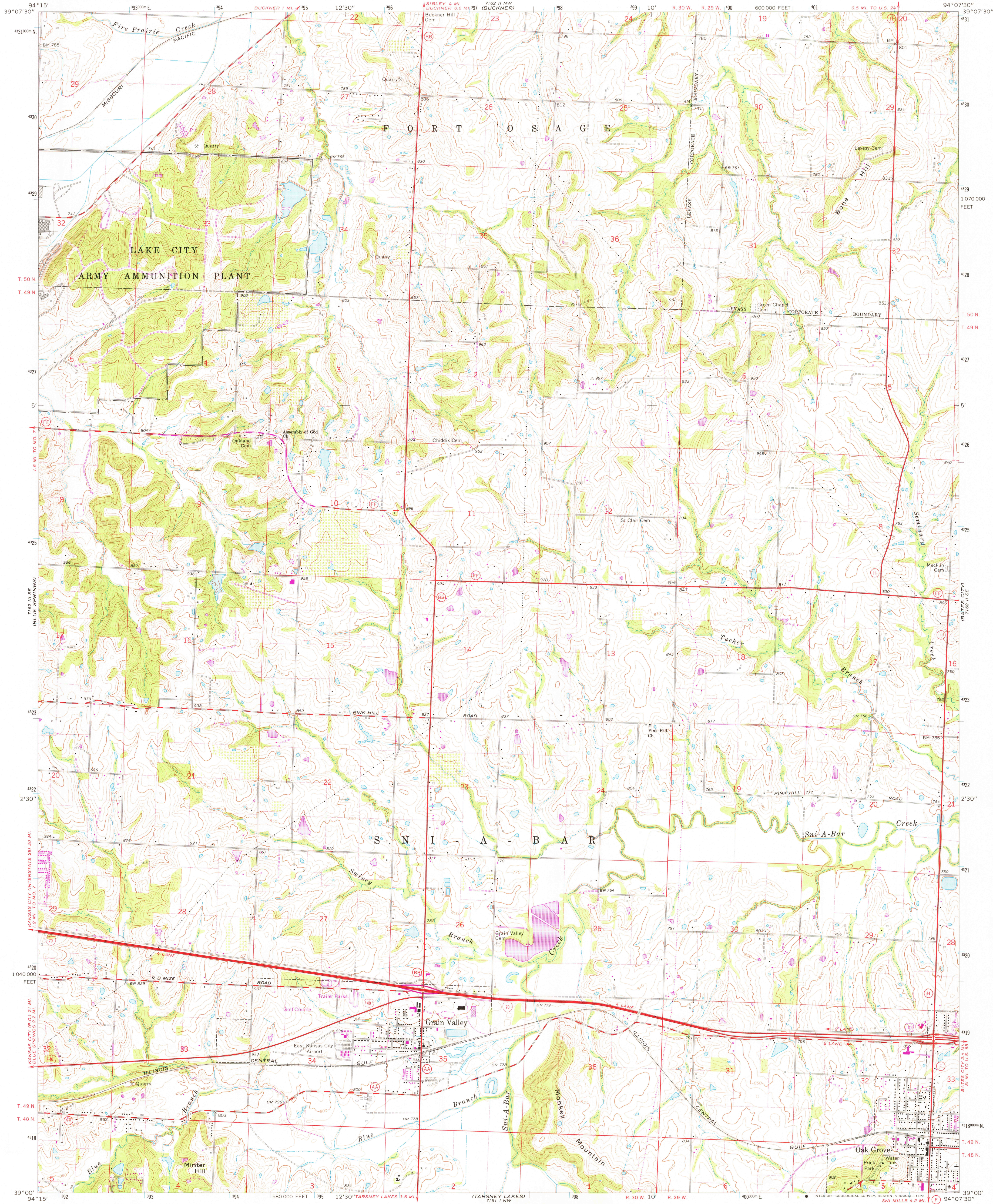


UNITED STATES  
DEPARTMENT OF THE INTERIOR  
GEOLOGICAL SURVEY

OAK GROVE QUADRANGLE  
MISSOURI—JACKSON CO.  
7.5 MINUTE SERIES (TOPOGRAPHIC)



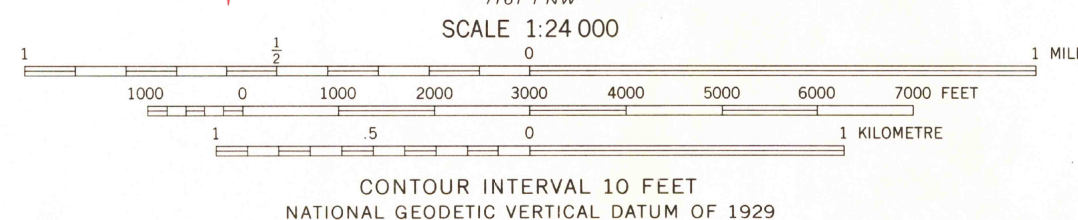
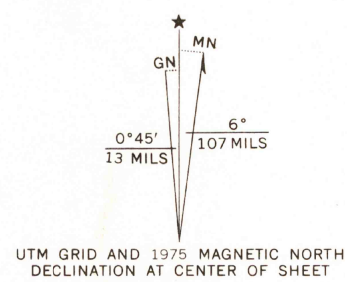
Mapped, edited, and published by the Geological Survey  
Control by USGS and USC&GS

Topography by photogrammetric methods from aerial  
photographs taken 1963. Field checked 1965  
Supersedes map dated 1934

Polyconic projection. 1927 North American datum  
10,000-foot grid based on Missouri coordinate system, west zone  
1000 metre Universal Transverse Mercator grid ticks,  
zone 15, shown in blue

Fine red dashed lines indicate selected fence and field lines where  
generally visible on aerial photographs. This information is unchecked

Revisions shown in purple compiled from aerial photographs  
taken 1975. This information not field checked



THIS MAP COMPLIES WITH NATIONAL MAP ACCURACY STANDARDS  
FOR SALE BY U. S. GEOLOGICAL SURVEY, DENVER, COLORADO 80225, OR RESTON, VIRGINIA 22092  
AND BY THE DIVISION OF RESEARCH AND TECHNICAL INFORMATION  
MISSOURI DEPARTMENT OF NATURAL RESOURCES, ROLLA, MISSOURI 65401  
A FOLDER DESCRIBING TOPOGRAPHIC MAPS AND SYMBOLS IS AVAILABLE ON REQUEST



OAK GROVE, MO.  
N3900—W9407.5/7.5

USGS  
Historical File  
Topographic Division

1965  
PHOTOREVISED 1975  
AMS 7162 II SW—SERIES V879

NOV 10 1976