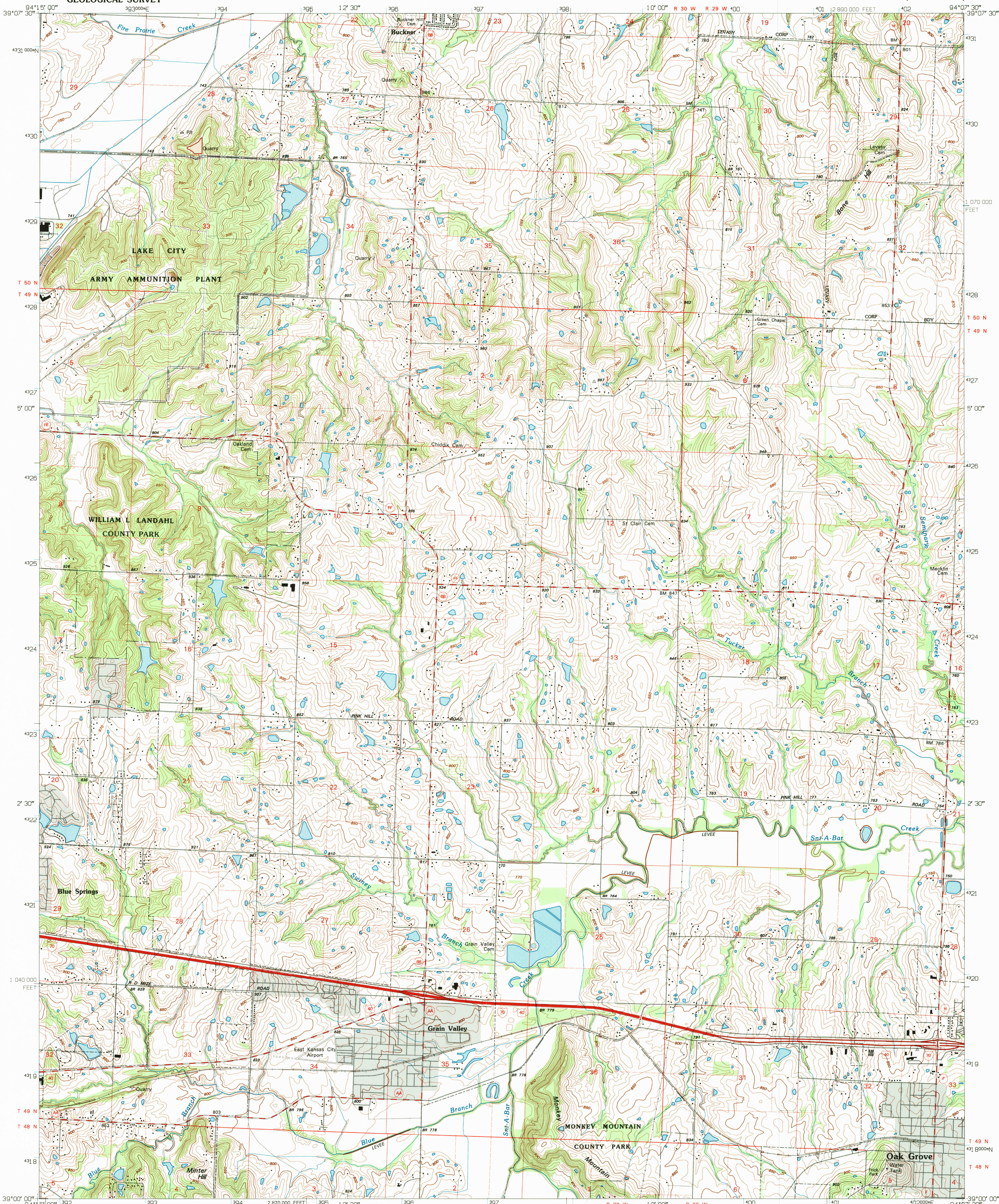


UNITED STATES
DEPARTMENT OF THE INTERIOR
GEOLOGICAL SURVEY

OAK GROVE QUADRANGLE
MISSOURI-JACKSON CO.
7.5 MINUTE SERIES (TOPOGRAPHIC)



Produced by the United States Geological Survey
Compiled by photogrammetric methods from imagery dated 1963
Field checked 1965. Revised from imagery dated 1990
PLSS and survey control current as of 1965. Map edited 1995
Contours not revised
North American Datum of 1983 (NAD 83). Projection and
blue 1000-meter ticks: Universal Transverse Mercator, zone 15
10 000-foot ticks: Missouri Coordinate System of 1983 (west zone)
North American Datum of 1927 (NAD 27) is shown by dashed
corner ticks. The values of the shift between NAD 83 and NAD 27
for 7.5-minute intersections are obtainable from National Geodetic
Survey NADCON software
There may be private inholdings within the boundaries of
the National or State reservations shown on this map

UTM GRID AND 1995 MAGNETIC NORTH
DECLINATION AT CENTER OF SHEET

SCALE 1:24000
CONTOUR INTERVAL 10 FEET
NATIONAL GEODETIC VERTICAL DATUM OF 1929

THIS MAP COMPLIES WITH NATIONAL MAP ACCURACY STANDARDS
FOR SALE BY U.S. GEOLOGICAL SURVEY, DENVER, COLORADO 80225, OR RESTON, VIRGINIA 22092
AND DIVISION OF GEOLOGY AND LAND SURVEY
MISSOURI DEPARTMENT OF NATURAL RESOURCES, ROLLA, MISSOURI 65401
A FOLDER DESCRIBING TOPOGRAPHIC MAPS AND SYMBOLS IS AVAILABLE ON REQUEST

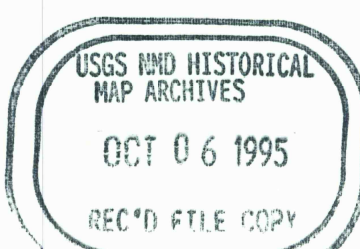


QUADRANGLE LOCATION

1	2	3
4	5	6
7	8	

ADJOINING 7.5' QUADRANGLE NAMES

ROAD CLASSIFICATION
Primary highway
hard surface
Secondary highway
hard surface
Light-duty road, hard or
improved surface
Unimproved road



OAK GROVE, MO
39094-A2-TF-024
1990

DMA 7162 II SW - SERIES V879

