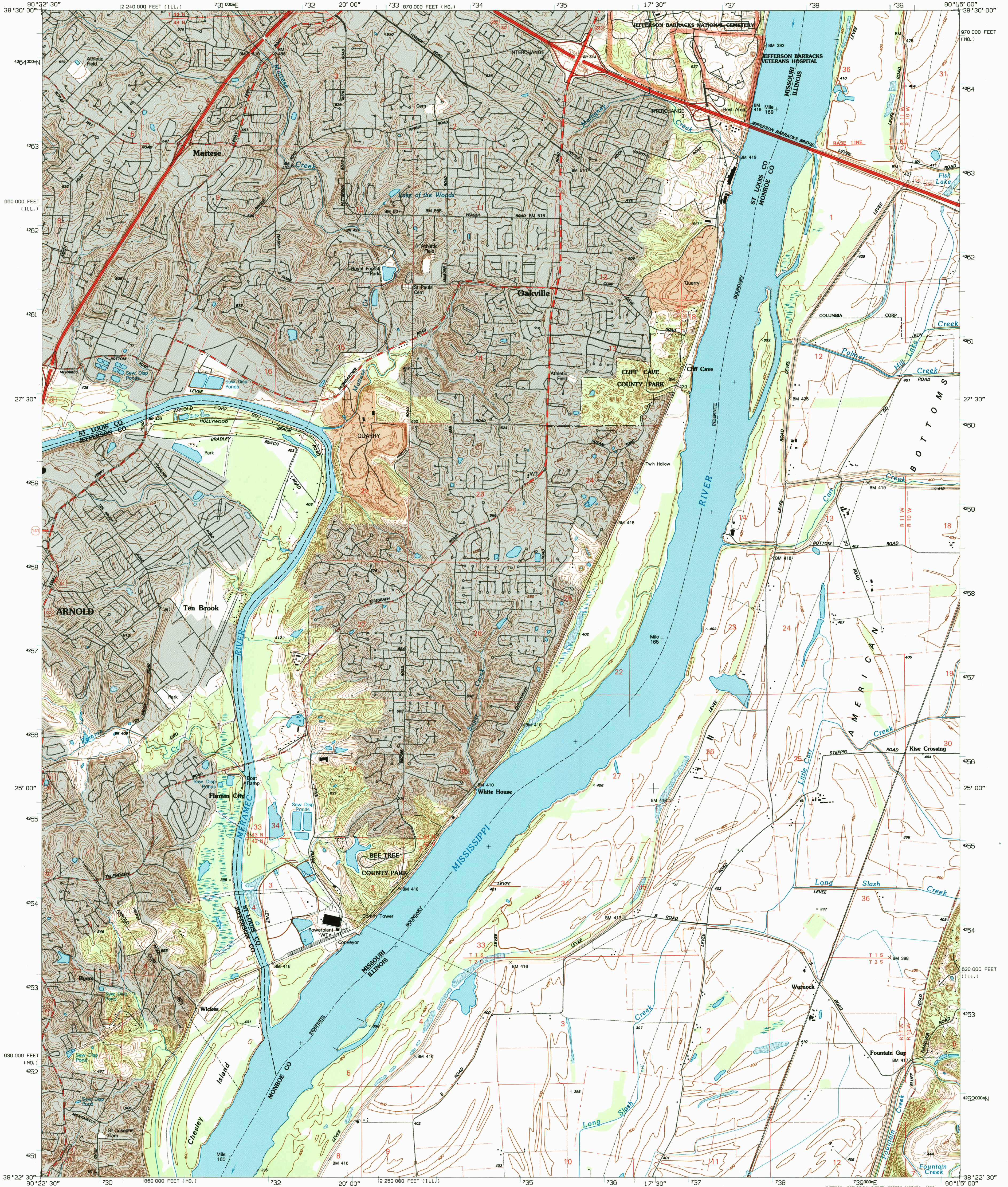
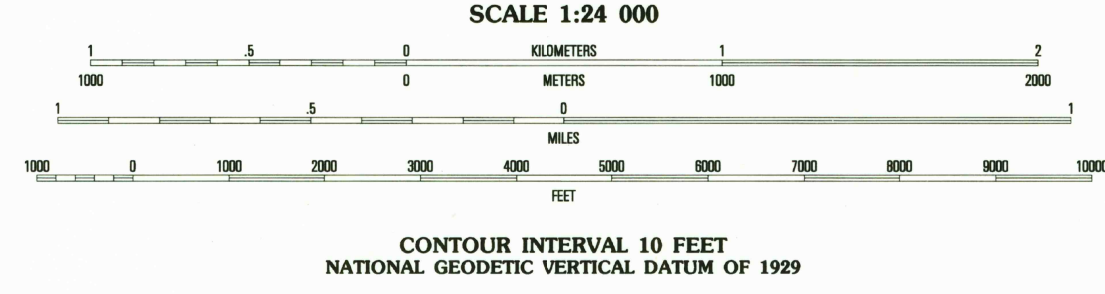
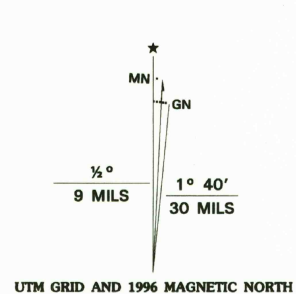


UNITED STATES
DEPARTMENT OF THE INTERIOR
GEOLOGICAL SURVEY

OAKVILLE QUADRANGLE
MISSOURI-ILLINOIS
7.5-MINUTE SERIES (TOPOGRAPHIC)



Produced by the United States Geological Survey
in cooperation with U.S. Corps of Engineers
Compiled by photogrammetric methods from imagery dated 1986
Field checked 1989. Revised from imagery dated 1993
PLSS and survey control current as of 1989. Map edited 1996
Contours not revised. Contours that conflict with revised
planimetry are dashed
North American Datum of 1983 (NAD 83). Projection and
blue 1000-meter ticks: Universal Transverse Mercator, zone 15
10 000-foot ticks: Missouri (east zone) and Illinois (west zone)
Coordinate Systems of 1983
North American Datum of 1927 (NAD 27) is shown by dashed
corner ticks. The values of the shift between NAD 83 and NAD 27
for 7.5-minute intersections are obtainable from National Geographic
Survey NADCON software
There may be private inholdings within the boundaries of
the National or State reservations shown on this map



ROAD CLASSIFICATION

Primary highway	Light-duty road, hard or
hard surface	improved surface
Secondary highway	
hard surface	Unimproved road

Interstate Route U.S. Route State Route

ADJOINING 7.5' QUADRANGLE NAMES

1	2	3
4	5	6
7	8	9

JUL 16 1996
REC'D FILE COPY

OAKVILLE, MO-IL
38090-D3-TF-024
1993
DMA 7960 IV NE-SERIES V876

THIS MAP COMPLIES WITH NATIONAL MAP ACCURACY STANDARDS
FOR SALE BY U.S. GEOLOGICAL SURVEY, DENVER, COLORADO 80225, OR RESTON, VIRGINIA 22092
DIVISION OF GEOLOGY AND LAND SURVEY
MISSOURI DEPARTMENT OF NATURAL RESOURCES, ROLLA, MISSOURI 65401
AND ILLINOIS GEOLOGICAL SURVEY, CHAMPAIGN, ILLINOIS 61820
A FOLDER DESCRIBING TOPOGRAPHIC MAPS AND SYMBOLS IS AVAILABLE ON REQUEST

