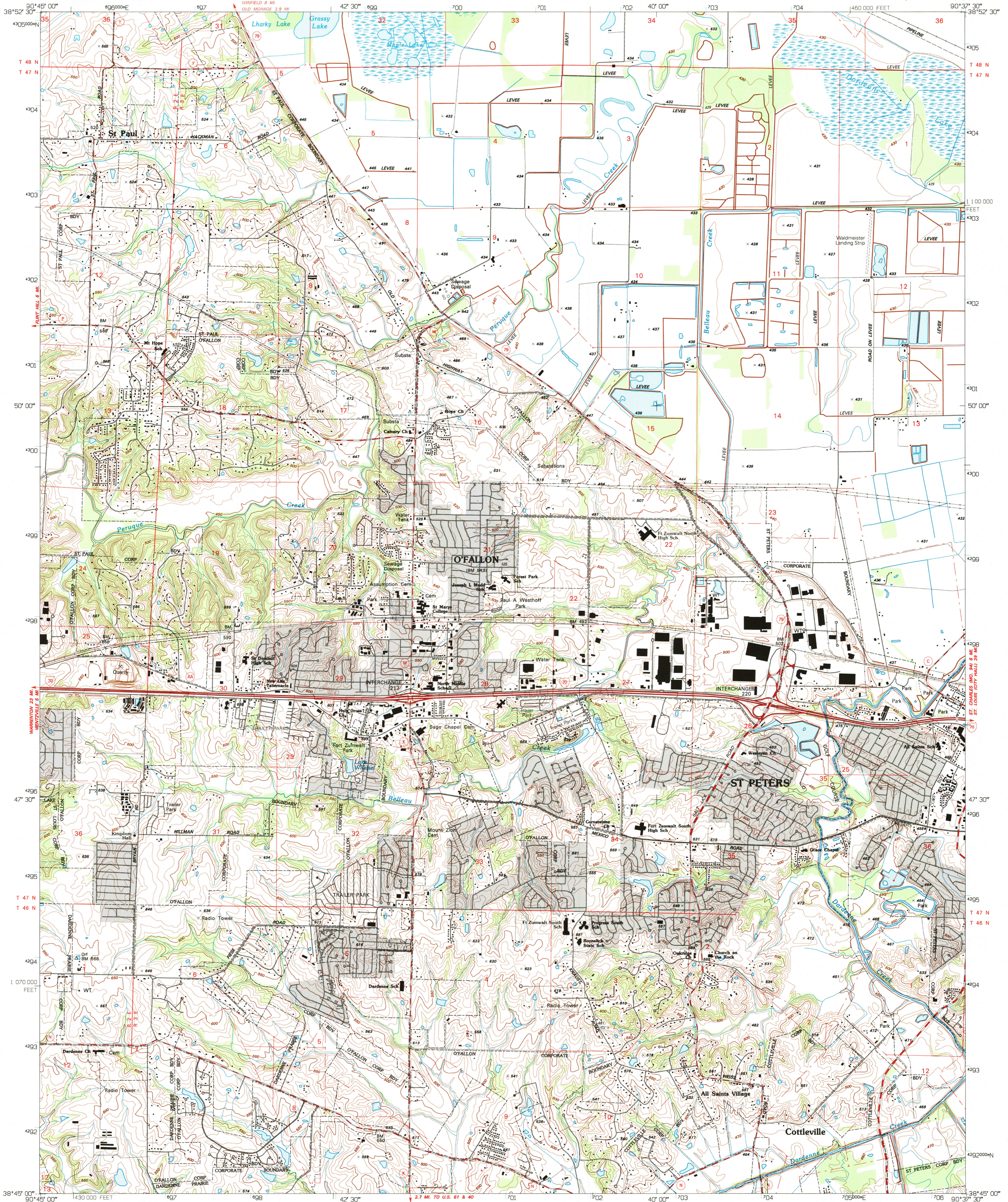


UNITED STATES  
DEPARTMENT OF THE INTERIOR  
GEOLOGICAL SURVEY

O'FALLON QUADRANGLE  
MISSOURI-ST. CHARLES CO.  
7.5 MINUTE SERIES (TOPOGRAPHIC)



Produced by the United States Geological Survey  
Control by USGS and NOS/NOAA  
Topography by photogrammetric methods from aerial photographs  
taken 1952. Field checked 1954. Revised from aerial photographs  
taken 1950. Field checked 1993. Map edited 1994  
Universal Transverse Mercator projection  
10,000-foot grid ticks: Missouri coordinate system, east zone  
1000-meter Universal Transverse Mercator grid ticks, zone 15, shown in blue  
1927 North American Datum (NAD 27)  
North American Datum of 1983 (NAD 83) is shown by dashed corner ticks  
The values of the shift between NAD 27 and 83 for 7.5-minute  
intersections are given in USGS Bulletin 1875  
Gray tint indicates areas in which only landmark buildings are shown

UTM GRID AND 1984 MAGNETIC NORTH  
DECLINATION AT CENTER OF SHEET

SCALE 1:24000  
KILOMETERS  
METERS  
MILES  
FOOT  
CONTOUR INTERVAL 10 FEET  
NATIONAL GEODETIC VERTICAL DATUM OF 1929

ROAD CLASSIFICATION  
Primary highway  
Light-duty road, hard or  
hard surface  
Secondary highway  
hard surface  
Unimproved road  
Interstate Route  
U.S. Route  
State Route

QUADRANGLE LOCATION

1	2	3
4	5	6
7	8	9

O'FALLON, MO  
38990-G6-TF-024  
1994

APR 24 1995  
REC'D FILE COPY

COMPLIES WITH U.S. GEOLOGICAL SURVEY STANDARDS FOR SPATIAL ACCURACY - CLASS 2  
FOR SALE BY U.S. GEOLOGICAL SURVEY, DENVER, COLORADO 80225, OR RESTON, VIRGINIA 22092  
MISSOURI DEPARTMENT OF NATURAL RESOURCES, ROLLA, MISSOURI 65401  
A FOLDER DESCRIBING TOPOGRAPHIC MAPS AND SYMBOLS IS AVAILABLE ON REQUEST

ADJOINING 7.5' QUADRANGLE NAMES  
DMA 7861 1 SW-SERIES V879