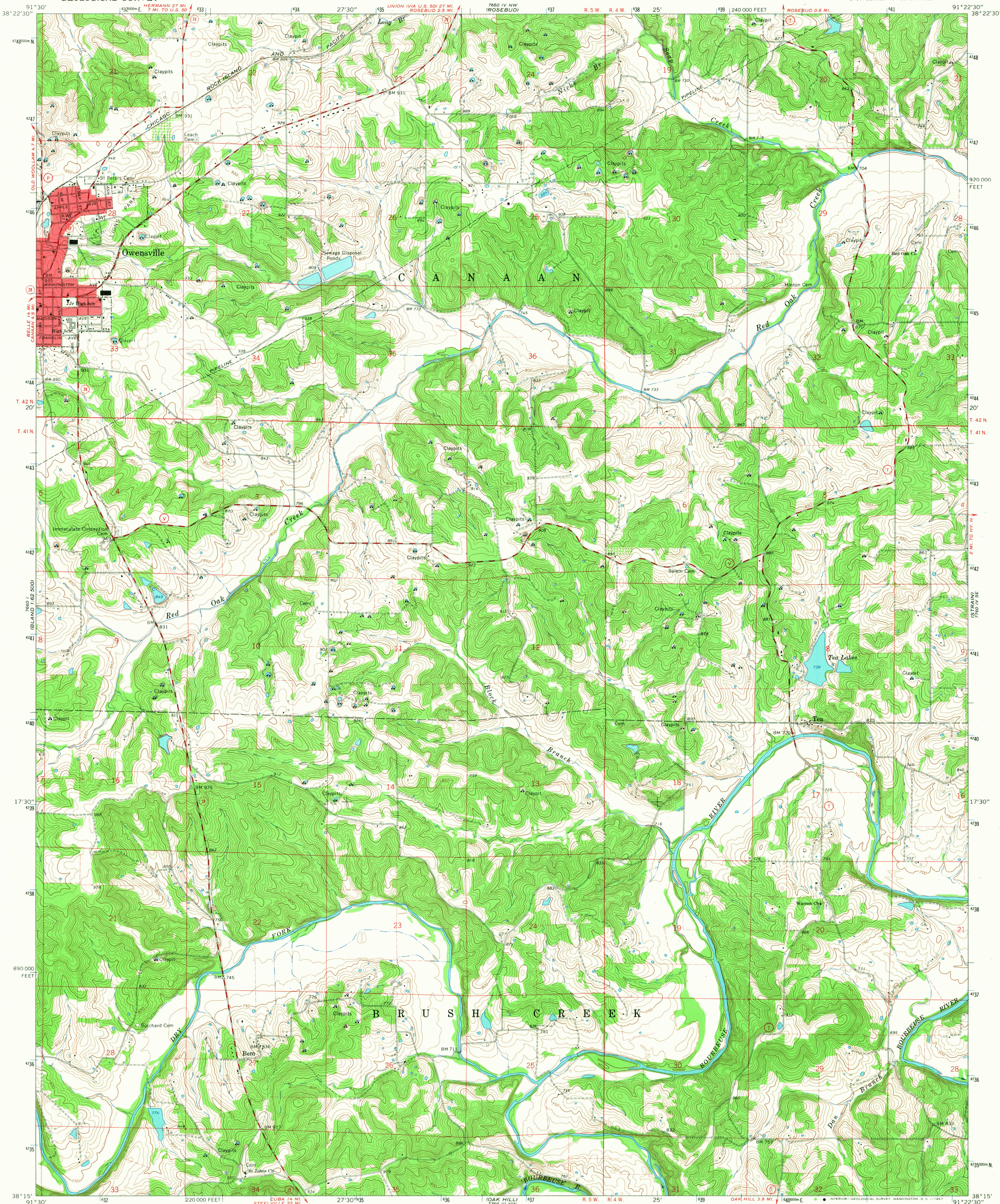
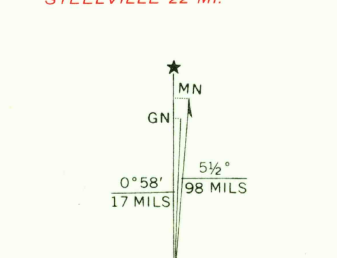


UNITED STATES  
DEPARTMENT OF THE INTERIOR  
GEOLOGICAL SURVEY

OWENSVILLE EAST QUADRANGLE  
MISSOURI—GASCONADE CO.  
7.5 MINUTE SERIES (TOPOGRAPHIC)  
SW 1/4 GERALD 15 QUADRANGLE



Mapped, edited, and published by the Geological Survey  
Control by USGS and USC&GS  
Topography by photogrammetric methods from aerial  
photographs taken 1964. Field checked 1966  
Polyconic projection. 1927 North American datum  
10,000-foot grid based on Missouri coordinate system, east zone  
1000-meter Universal Transverse Mercator grid ticks,  
zone 15, shown in blue  
Red tint indicates area in which only landmark buildings are shown  
Fine red dashed lines indicate selected fence and field lines where  
generally visible on aerial photographs. This information is unchecked



THIS MAP COMPLIES WITH NATIONAL MAP ACCURACY STANDARDS  
FOR SALE BY U.S. GEOLOGICAL SURVEY, DENVER, COLORADO 80225, OR WASHINGTON, D. C. 20242  
AND BY THE MISSOURI GEOLOGICAL SURVEY, ROLLA, MISSOURI 65401  
A FOLDER DESCRIBING TOPOGRAPHIC MAPS AND SYMBOLS IS AVAILABLE ON REQUEST

USGS  
Historical File  
Topographic Division

ROAD CLASSIFICATION  
Medium-duty ——— Light-duty ———  
Unimproved dirt ———  
○ State Route

U.S.G.S.  
FILE COPY  
TOPOGRAPHIC DIVISION

OWENSVILLE EAST, MO.  
SW 1/4 GERALD 15 QUADRANGLE  
N 3815—W 9122.5/7.5  
1966  
AMS 7760 IV SW—SERIES V879

3135  
AUG 7 1967