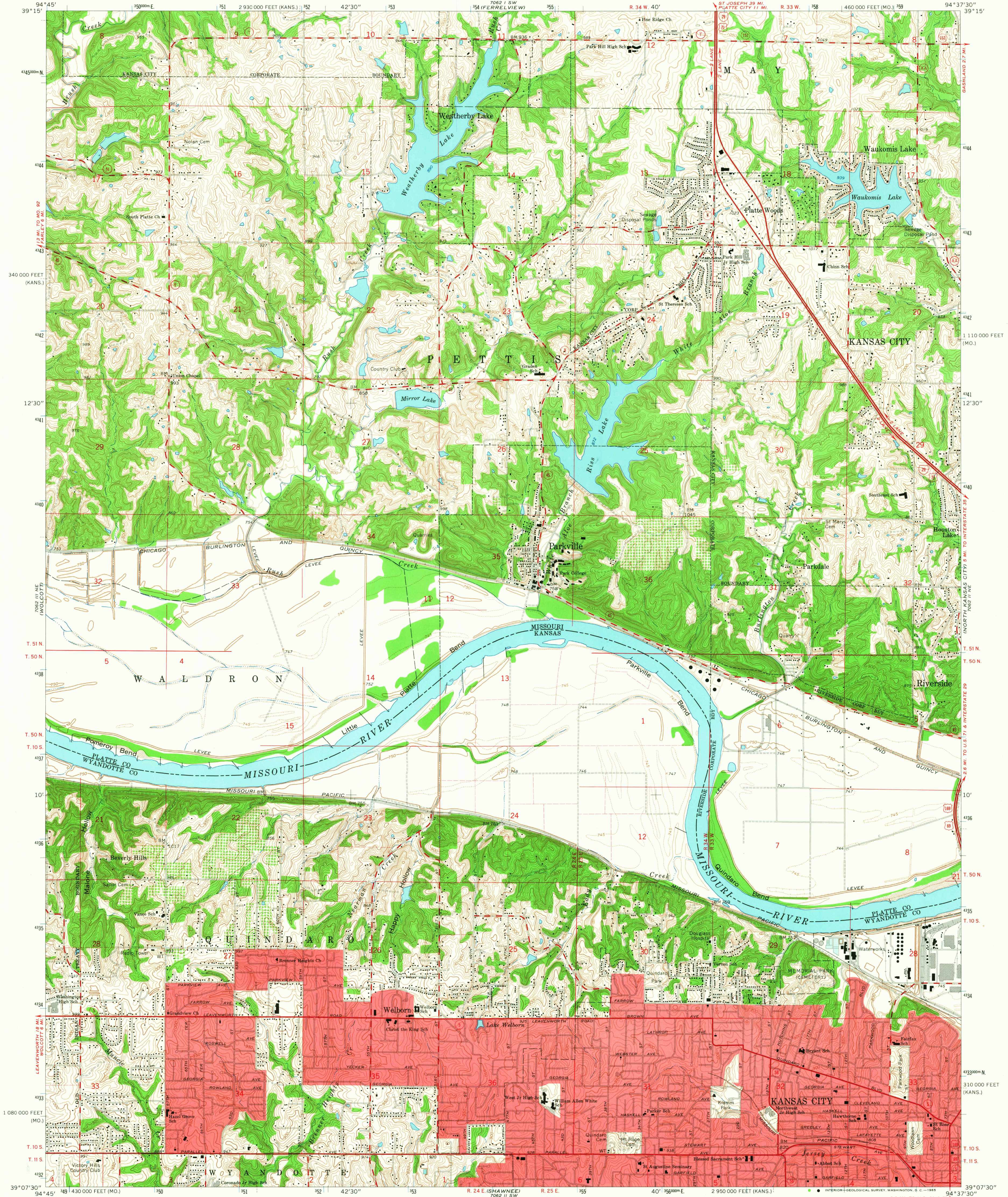
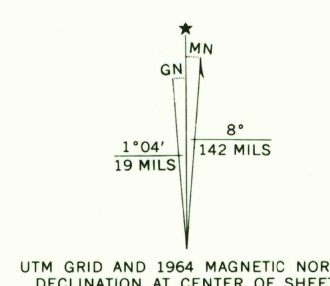


UNITED STATES
DEPARTMENT OF THE INTERIOR
GEOLOGICAL SURVEY

PARKVILLE QUADRANGLE
MISSOURI-KANSAS
7.5 MINUTE SERIES (TOPOGRAPHIC)



Mapped, edited, and published by the Geological Survey
Control by USGS and USC&GS
Topography in Missouri by photogrammetric methods from aerial photographs taken 1947. Field checked 1948. Revised 1964
Topography in Kansas by photogrammetric methods from aerial photographs taken 1963 and planetable surveys 1964
Polyconic projection. 1927 North American datum
10,000-foot grids based on Missouri coordinate system, west zone and Kansas coordinate system, north zone
100-meter Universal Transverse Mercator grid ticks, zone 15, shown in blue
Red tint indicates area in which only landmark buildings are shown
Fine red dashed lines indicate selected fence and field lines where generally visible on aerial photographs. This information is unchecked



SCALE 1:24,000
CONTOUR INTERVAL 10 FEET
DOTTED LINES REPRESENT 5-FOOT CONTOURS
DATUM IS MEAN SEA LEVEL
THIS MAP COMPLIES WITH NATIONAL MAP ACCURACY STANDARDS
FOR SALE BY U. S. GEOLOGICAL SURVEY, DENVER, COLORADO 80225 OR WASHINGTON, D. C. 20242.
MISSOURI GEOLOGICAL SURVEY, ROLLA, MISSOURI.
AND STATE GEOLOGICAL SURVEY, LAWRENCE, KANSAS
A FOLDER DESCRIBING TOPOGRAPHIC MAPS AND SYMBOLS IS AVAILABLE ON REQUEST

USGS
Historical File
Topographic Division

MISSOURI

QUADRANGLE LOCATION

U.S.G.S.
FILE COPY
TOPOGRAPHIC DIVISION

ROAD CLASSIFICATION

Heavy-duty	Light-duty
Medium-duty	Unimproved dirt

Interstate Route U.S. Route State Route

PARKVILLE, MO.-KANS.
N3907.5-W9437.5/7.5
1964
AMS 7062 II NW-SERIES V879

OCT 4 1965
2620