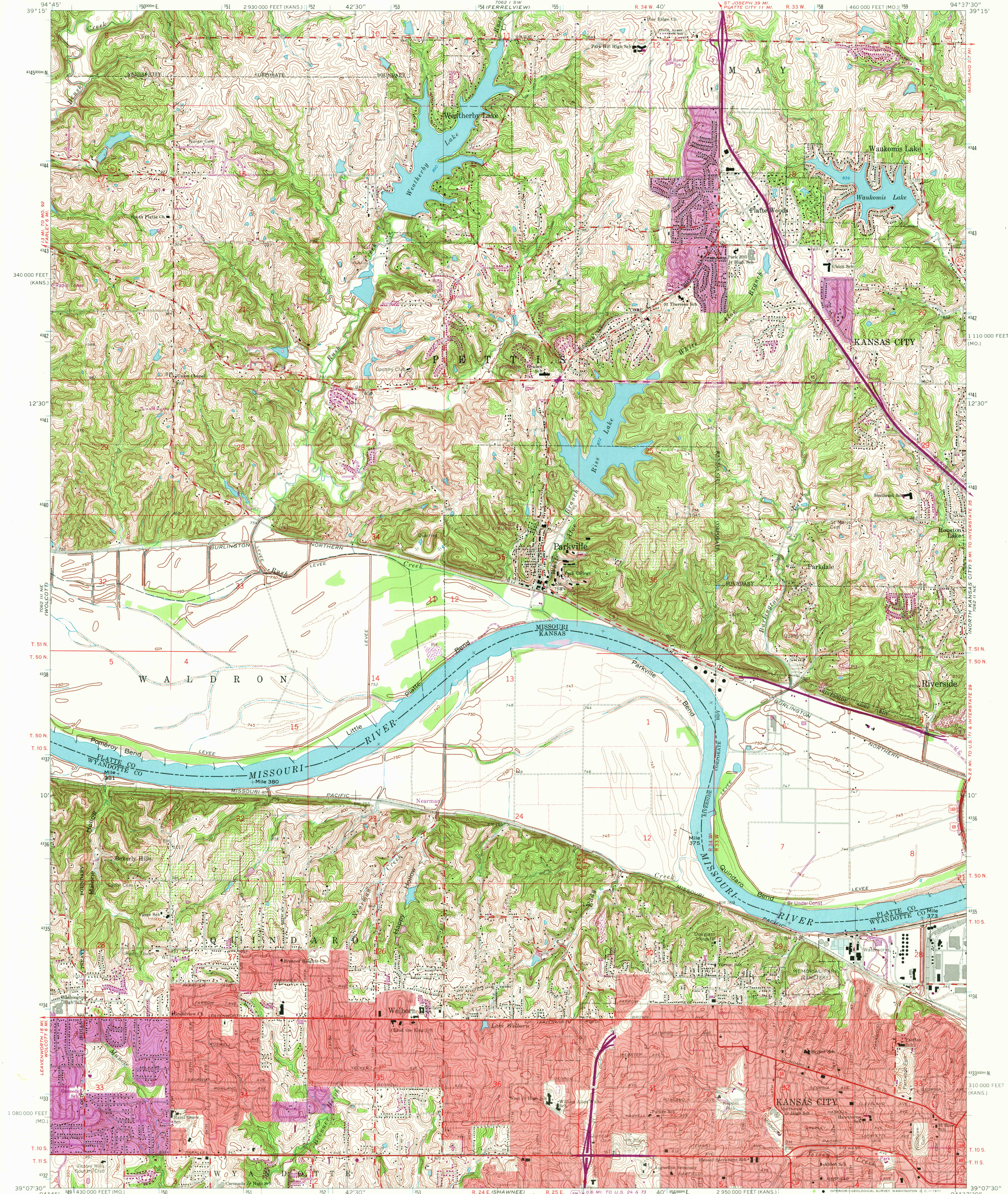


UNITED STATES
DEPARTMENT OF THE INTERIOR
GEOLOGICAL SURVEY

PARKVILLE QUADRANGLE
MISSOURI-KANSAS
7.5 MINUTE SERIES (TOPOGRAPHIC)



Mapped, edited, and published by the Geological Survey
Control by USGS and USC&GS

Topography in Missouri by photogrammetric methods from aerial photographs
taken 1947. Field checked 1948. Revised 1964

Topography in Kansas by photogrammetric methods from aerial
photographs taken 1963 and planetable surveys 1964

Polycyclic projection. 1927 North American datum
10,000-foot grids based on Missouri coordinate system, west zone
and Kansas coordinate system, north zone
1000-meter Universal Transverse Mercator grid ticks,
zone 15, shown in blue

Red tint indicates area in which only landmark buildings are shown

Fine red dashed lines indicate selected fence and field lines where
generally visible on aerial photographs. This information is unchecked

UTM GRID AND 1970 MAGNETIC NORTH
DECLINATION AT CENTER OF SHEET

THIS MAP COMPLIES WITH NATIONAL MAP ACCURACY STANDARDS
FOR SALE BY U.S. GEOLOGICAL SURVEY, DENVER, COLORADO 80225, OR WASHINGTON, D. C. 20242.

MISSOURI GEOLOGICAL SURVEY, ROLLA, MISSOURI 65401.
AND STATE GEOLOGICAL SURVEY, LAWRENCE, KANSAS 66044

A FOLDER DESCRIBING TOPOGRAPHIC MAPS AND SYMBOLS IS AVAILABLE ON REQUEST

Revisions shown in purple compiled from aerial photographs
taken 1970. This information not field checked

Purple tint indicates extension of urban areas

ROAD CLASSIFICATION
Heavy-duty ——— Light-duty ———
Medium-duty ——— Unimproved dirt ———
Interstate Route U.S. Route State Route

1964
PHOTOREVISED 1970
AMS 7062 II NW—SERIES V879

QUADRANGLE LOCATION
PARKVILLE, MO.—KANS.
N3907.5—W9 37.5/7.5

USGS
HISTORICAL FILE
TOPOGRAPHIC DIVISION

2295

OCT 2 6 1971