

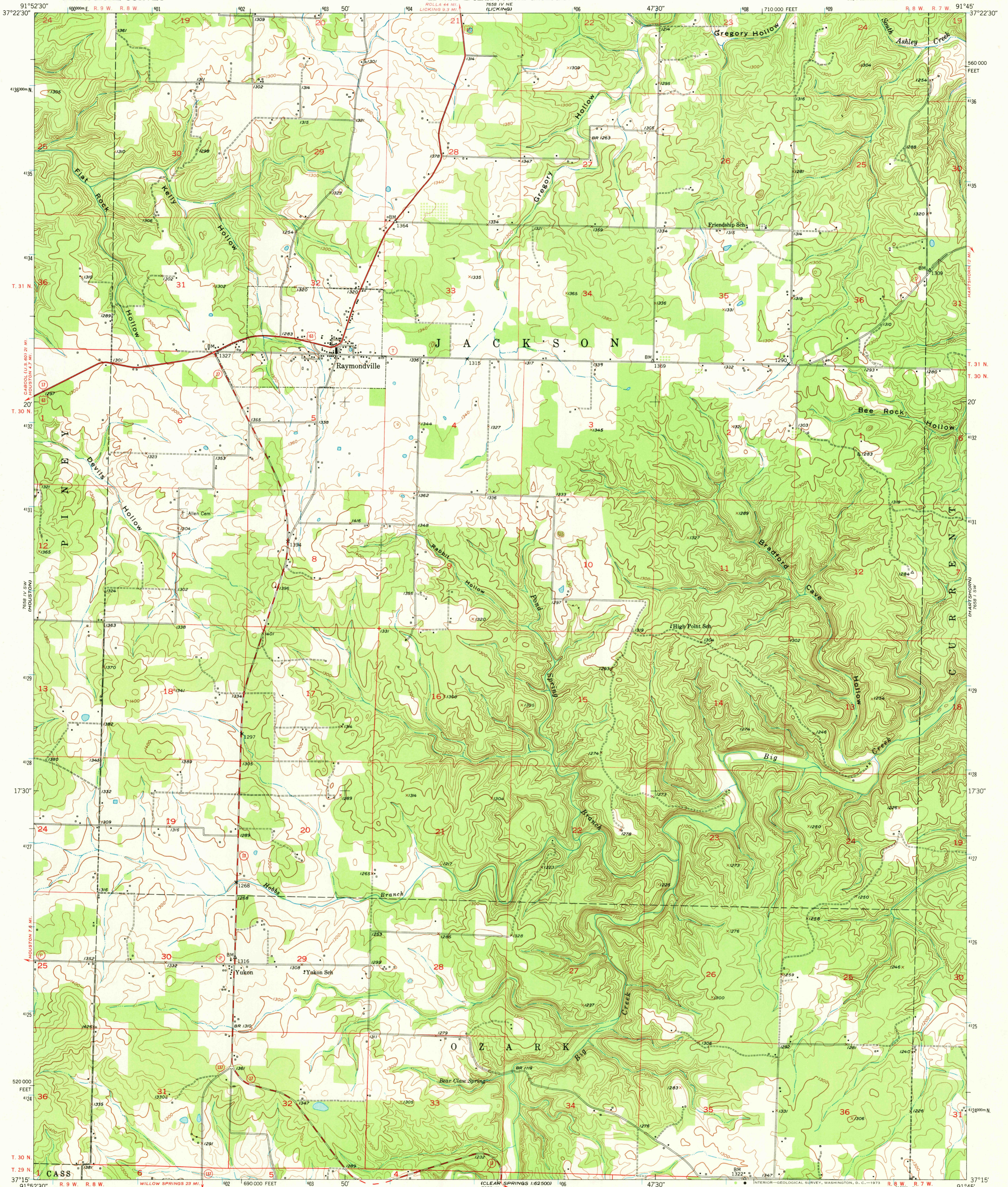
7658 IV SE (PRESENT)

UNITED STATES
DEPARTMENT OF THE INTERIOR
GEOLOGICAL SURVEY

STATE OF MISSOURI
GEOLOGICAL SURVEY AND WATER RESOURCES
EDWARD L. CLARK, STATE GEOLOGIST

RAYMONDVILLE QUADRANGLE
MISSOURI-TEXAS CO.
7.5 MINUTE SERIES (TOPOGRAPHIC)
SE/4 RAYMONDVILLE 15' QUADRANGLE

7658 IV NE (MONTANA)



Mapped, edited, and published by the Geological Survey
Control by USGS and USC&GS
Topography from aerial photographs by multiplex methods
Aerial photographs taken 1949. Field check 1951
Polyconic projection. 1927 North American datum
10,000-foot grid based on Missouri coordinate system,
central zone
1000-meter Universal Transverse Mercator grid ticks,
zone 15, shown in blue

UTM GRID AND 1951 MAGNETIC NORTH
DECLINATION AT CENTER OF SHEET

SCALE 1:24,000
1 0 1000 2000 3000 4000 5000 6000 7000 FEET
1 5 10 15 20 KILOMETER
CONTOUR INTERVAL 20 FEET
DATUM IS MEAN SEA LEVEL

ROAD CLASSIFICATION
Heavy-duty ——— Light-duty ———
Medium-duty ——— Unimproved dirt ———
U.S. Route ——— State Route ———

USGS
Historical File
Topographic Division

RAYMONDVILLE, MO.
SE/4 RAYMONDVILLE 15' QUADRANGLE
N3715—W9145/7.5

JUL 1 0 1973

1951
AMS 7658 IV SE—SERIES V872