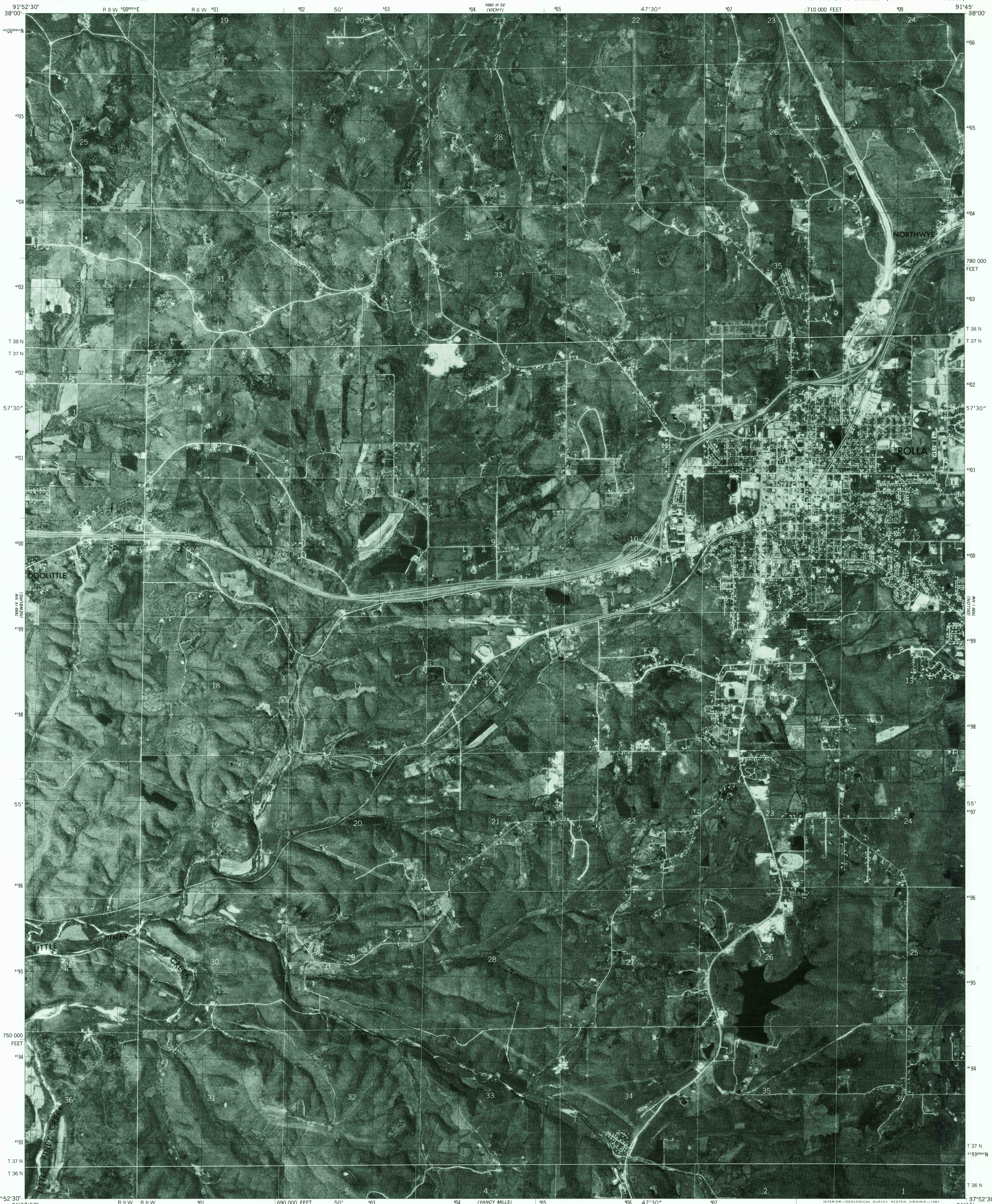


UNITED STATES  
DEPARTMENT OF THE INTERIOR  
GEOLOGICAL SURVEY

ROLLA QUADRANGLE  
MISSOURI  
7.5 MINUTE SERIES (ORTHO PHOTOQUAD)



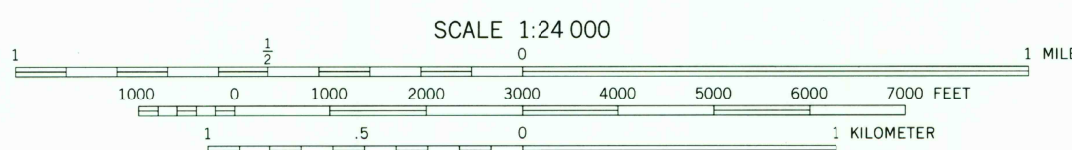
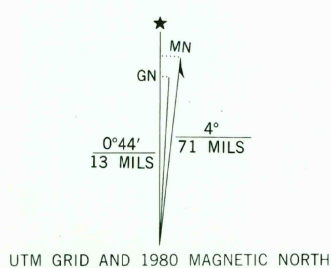
Produced and published by the Geological Survey  
in cooperation with the Soil Conservation Service

Orthophotograph prepared from 1:80 000-scale  
aerial photograph taken April 22, 1980

Projection and 10,000-foot grid ticks: Missouri coordinate  
system, central zone (transverse Mercator)  
1000-meter Universal Transverse Mercator grid, zone 15  
1927 North American Datum

To place on the predicted North American Datum 1983  
move the projection lines 2 meters south and  
13 meters east as shown by dashed corner ticks

Photomagey rectified by optical scanning  
which may produce double or mismatched images;  
use the mean of image positions for map point



THIS MAP COMPLIES WITH NATIONAL MAP ACCURACY STANDARDS  
FOR SALE BY U. S. GEOLOGICAL SURVEY, DENVER, COLORADO 80225, OR RESTON, VIRGINIA 22092,  
AND THE DIVISION OF GEOLOGY AND LAND SURVEY  
MISSOURI DEPARTMENT OF NATURAL RESOURCES, ROLLA, MISSOURI 65401



RETURN TO:  
USGS NMD HISTORICAL MAP ARCHIVES

This quadrangle area also covered by  
1:24 000-scale topographic map

ROLLA, MO.  
N3752.5-W9145/7.5

1980

DMA 7659 IV NE-SERIES V079

Land lines from corresponding 1:24 000-scale topographic  
map dated 1963. There may be discrepancies between  
positions of land lines and photomagey

DEC 3 1981