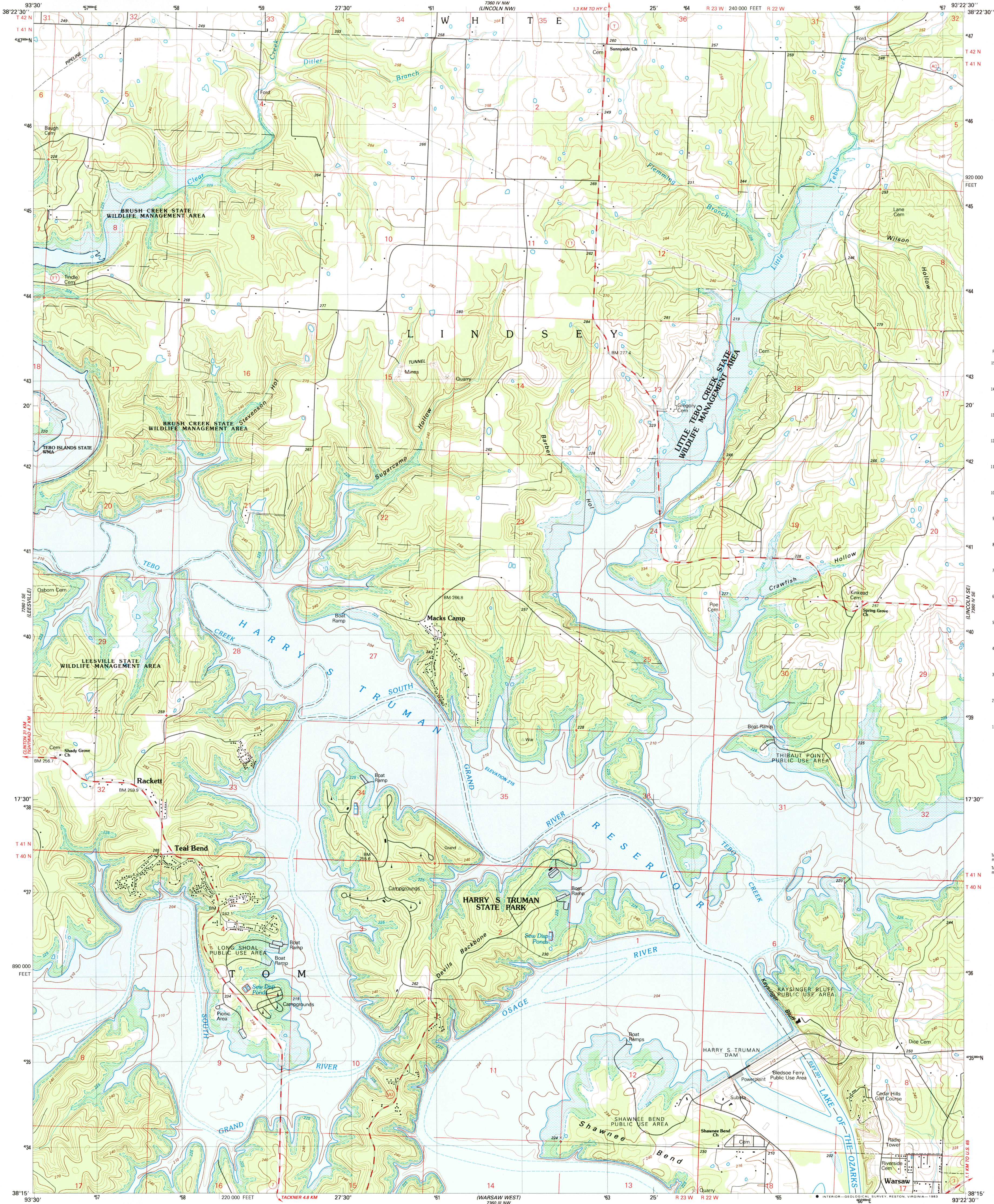


UNITED STATES
DEPARTMENT OF THE INTERIOR
GEOLOGICAL SURVEY

SHAWNEE BEND QUADRANGLE
MISSOURI-BENTON CO.
7.5 MINUTE SERIES (TOPOGRAPHIC)



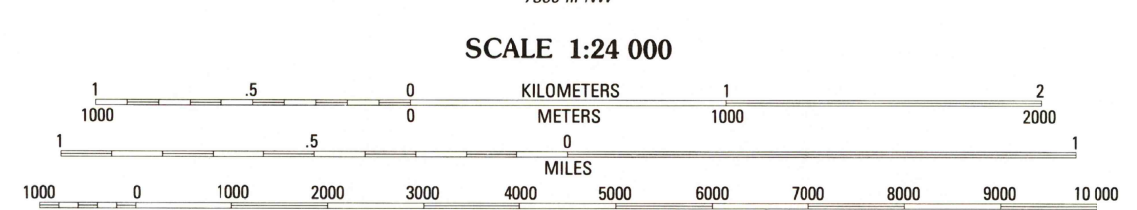
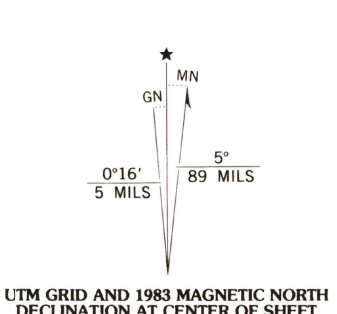
CONVERSION
SCALES



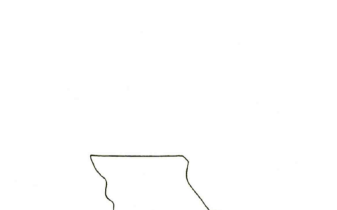
Feet	Meters
1	3048
2	6096
3	9144
4	12192
5	15240
6	18288
7	21336
8	24384
9	27432
10	30480

To convert feet to meters
multiply by .3048
To convert meters to feet
multiply by 3.2808

Produced by the United States Geological Survey
Control by USGS and NOS/NOAA
Topography by photogrammetric methods from aerial photographs
taken 1979-80. Field checked 1981. Map edited 1983
Supersedes map dated 1959
Projection and 1000-meter grid, zone 15,
Universal Transverse Mercator
10,000-foot grid ticks: Missouri coordinate system,
central zone
1927 North American Datum
To place on the predicted North American Datum 1983,
move the projection lines 17 meters east as shown by dashed corner ticks
There may be private inholdings within the boundaries of
the National or State reservations shown on this map
Areas covered by dashed light-blue pattern
are subject to controlled inundation
Fine red dashed lines indicate selected fence and field lines where
generally visible on aerial photographs. This information is unchecked



CONTOUR INTERVAL 6 METERS
NATIONAL GEODETIC VERTICAL DATUM OF 1929
CONTROL ELEVATIONS SHOWN TO THE NEAREST 0.1 METER
OTHER ELEVATIONS SHOWN TO THE NEAREST METER
THIS MAP COMPLIES WITH NATIONAL MAP ACCURACY STANDARDS
FOR SALE BY U. S. GEOLOGICAL SURVEY, DENVER, COLORADO 80225, OR RESTON, VIRGINIA 22092
AND THE DIVISION OF GEOLOGY AND LAND SURVEY
MISSOURI DEPARTMENT OF NATURAL RESOURCES, ROLA, MISSOURI 65401
A FOLDER DESCRIBING TOPOGRAPHIC MAPS AND SYMBOLS IS AVAILABLE ON REQUEST



CONTOURS AND ELEVATIONS
IN METERS

ROAD CLASSIFICATION
Primary highway,
hard surface Light-duty road, hard or
improved surface
Secondary highway,
hard surface Unimproved road
Interstate Route U. S. Route State Route

SHAWNEE BEND, MO.
N3815-W9322.5/7.5
1983
DMA 7360 IV SW-SERIES V879

RETURN TO:
USGS AND HISTORICAL MAP ARCHIVES