

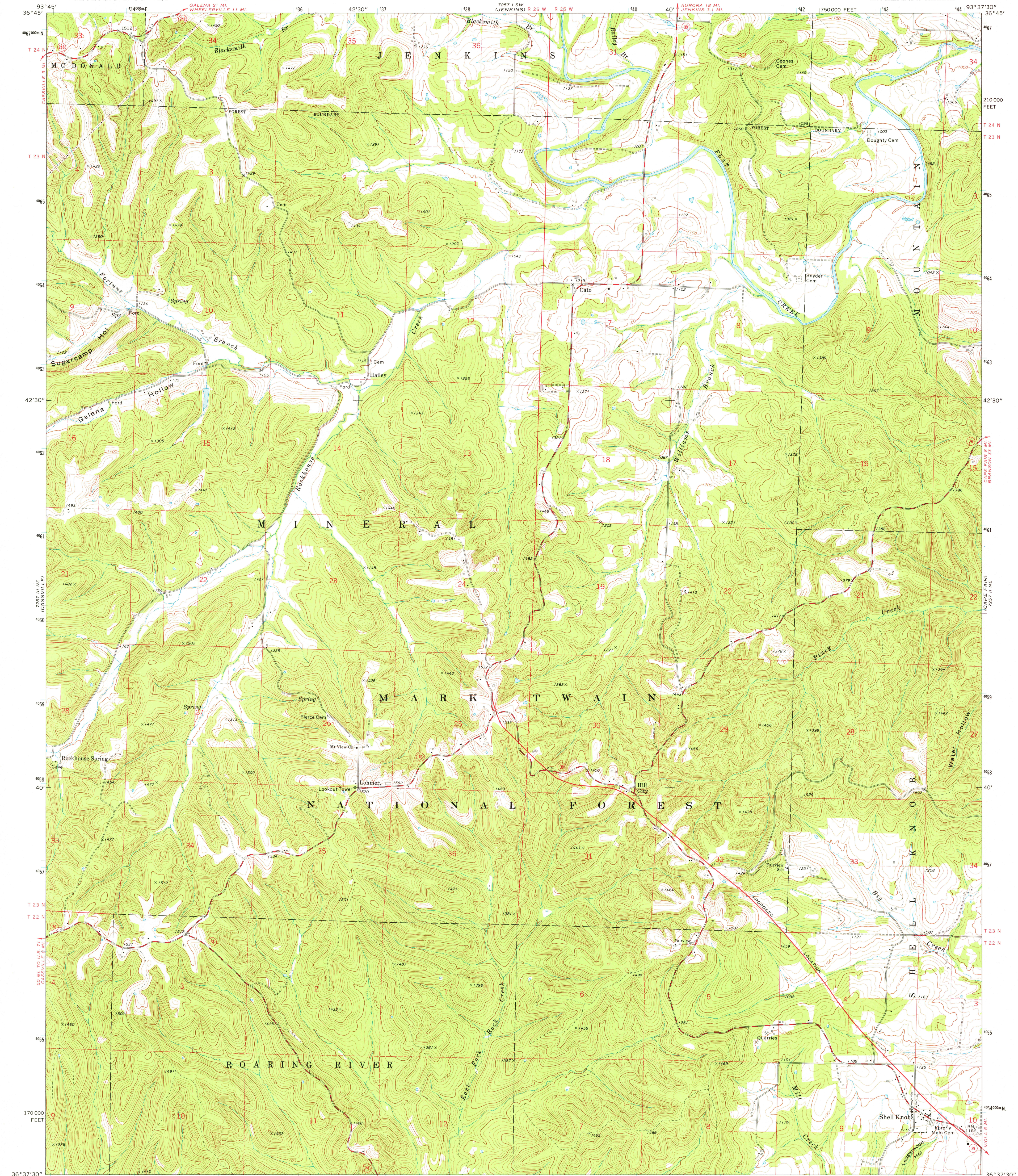
2557 11 NE  
(MC DOWELL)

UNITED STATES  
DEPARTMENT OF THE INTERIOR  
GEOLOGICAL SURVEY



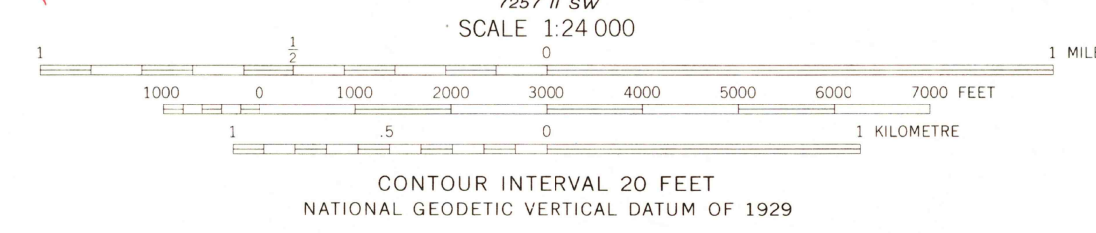
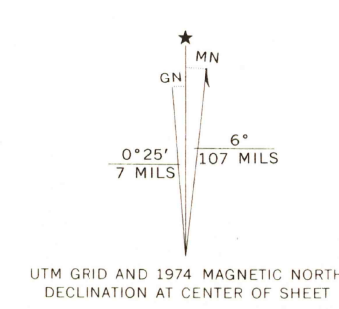
SHELL KNOB QUADRANGLE  
MISSOURI—BARRY CO.  
7.5 MINUTE SERIES (TOPOGRAPHIC)  
NW 4 SHELL KNOB 15' QUADRANGLE

2557 11 SE  
(JENKINS)



(EAGLE ROCK)  
7257 11 SE

Mapped, edited, and published by the Geological Survey  
Control by USGS and NOS/NOAA  
Topography by photogrammetric methods from aerial  
photographs taken 1973. Field checked 1974  
Projection and 10,000-foot grid ticks: Missouri coordinate  
system, west zone (transverse Mercator)  
1000-metre Universal Transverse Mercator grid ticks,  
zone 15, shown in blue. 1927 North American datum  
Fine red dashed lines indicate selected fence and field lines where  
generally visible on aerial photographs. This information is unchecked  
There may be private inholdings within the boundaries of  
the National or State reservations shown on this map



THIS MAP COMPLIES WITH NATIONAL MAP ACCURACY STANDARDS  
FOR SALE BY U. S. GEOLOGICAL SURVEY, DENVER, COLORADO 80225, OR RESTON, VIRGINIA 22092  
AND BY THE DIVISION OF RESEARCH AND TECHNICAL INFORMATION  
MISSOURI DEPARTMENT OF NATURAL RESOURCES, ROLLA, MISSOURI 65401  
A FOLDER DESCRIBING TOPOGRAPHIC MAPS AND SYMBOLS IS AVAILABLE ON REQUEST



ROAD CLASSIFICATION  
Primary highway, hard surface  
Secondary highway, hard surface  
Unimproved road  
Light duty road, hard or improved surface  
Unimproved road  
Interstate Route  
U. S. Route  
State Route  
USGS  
Historical File  
Topographic Division  
SHELL KNOB, MO.  
NW 4 SHELL KNOB 15' QUADRANGLE  
N3637.5—W9337.5/7.5  
1974  
AMS 7257 11 NW—SERIES V879

APR 16 1978

2900