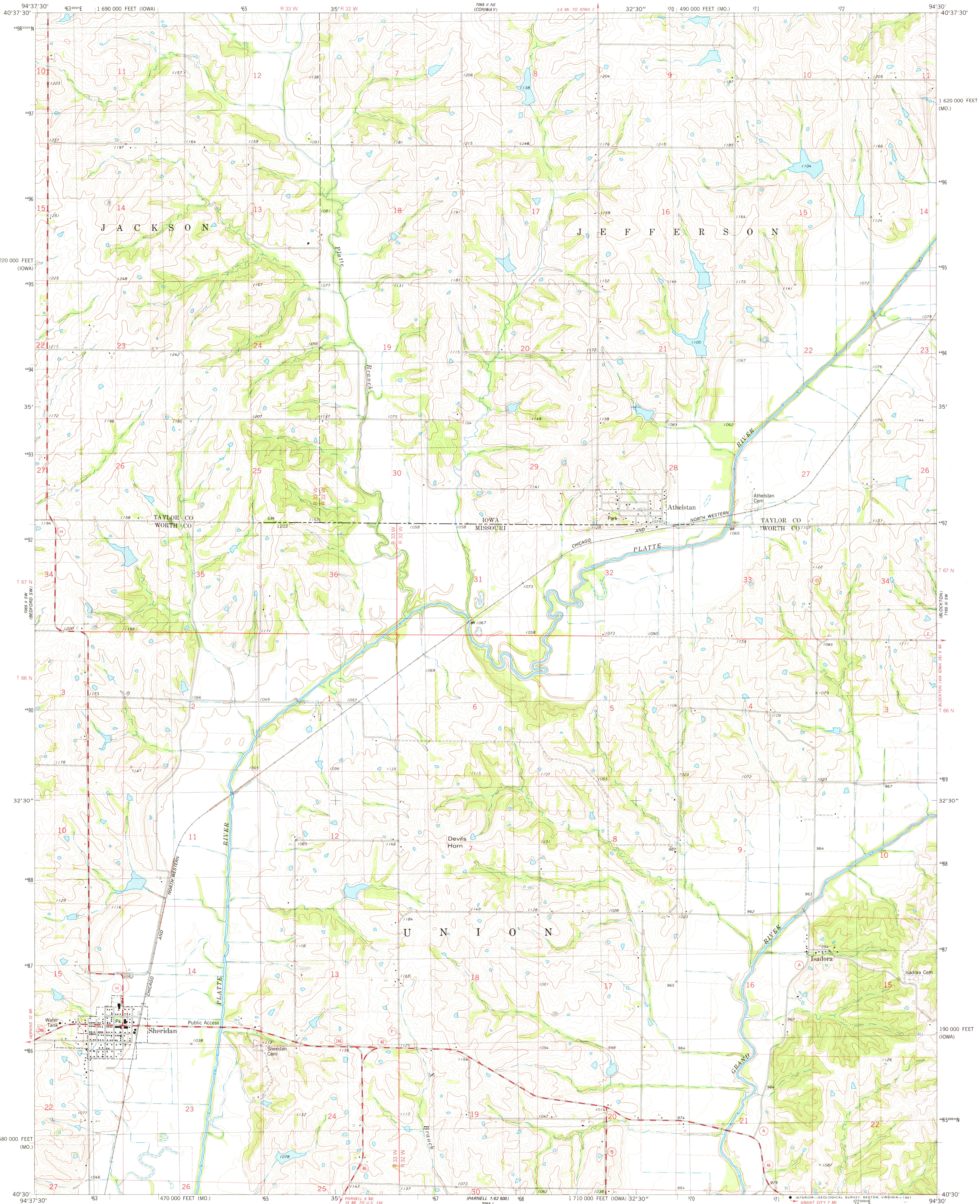


UNITED STATES
DEPARTMENT OF THE INTERIOR
GEOLOGICAL SURVEY

SHERIDAN QUADRANGLE
MISSOURI-IOWA
7.5 MINUTE SERIES (TOPOGRAPHIC)



Mapped, edited, and published by the Geological Survey
in cooperation with the Iowa Geological Survey

Control by USGS and NOS/NOAA

Topography by photogrammetric methods from aerial photographs
taken 1975. Field checked 1977. Map edited 1980

Projection: Missouri coordinate system, west zone
(transverse Mercator)

10,000-foot grid ticks based on Missouri coordinate system,
west zone and Iowa coordinate system, south zone

1000-meter Universal Transverse Mercator grid, zone 15

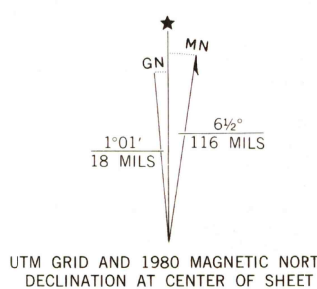
1927 North American Datum

To place on the predicted North American Datum 1983

move the projection lines 3 meters north and

20 meters east as shown by dashed corner ticks

Fine red dashed lines indicate selected fence and field lines where
generally visible on aerial photographs. This information is unchecked



SCALE 1:24 000
1 0000 0 1000 2000 3000 4000 5000 6000 7000 FEET
1 0 1 2 3 4 5 6 7 8 9 10 KILOMETER

CONTOUR INTERVAL 10 FEET
NATIONAL GEODETIC VERTICAL DATUM OF 1929
THIS MAP COMPLIES WITH NATIONAL MAP ACCURACY STANDARDS
FOR SALE BY U. S. GEOLOGICAL SURVEY, DENVER, COLORADO 80225, OR RESTON, VIRGINIA 22092
AND THE DIVISION OF GEOLOGY AND LAND SURVEY
MISSOURI DEPARTMENT OF NATURAL RESOURCES, ROLLA, MISSOURI 65401
AND IOWA GEOLOGICAL SURVEY, IOWA CITY, IOWA 52240
A FOLDER DESCRIBING TOPOGRAPHIC MAPS AND SYMBOLS IS AVAILABLE ON REQUEST



ROAD CLASSIFICATION
Primary highway, hard surface ——— Light-duty road, hard or improved surface ———
Secondary highway, hard surface ——— Unimproved road ———
Interstate Route U. S. Route State Route

SHERIDAN, MO.-IOWA

N4030-W9430/7.5

1980

DMA 7065 II SE-SERIES V879

FEB 26 1981

2800