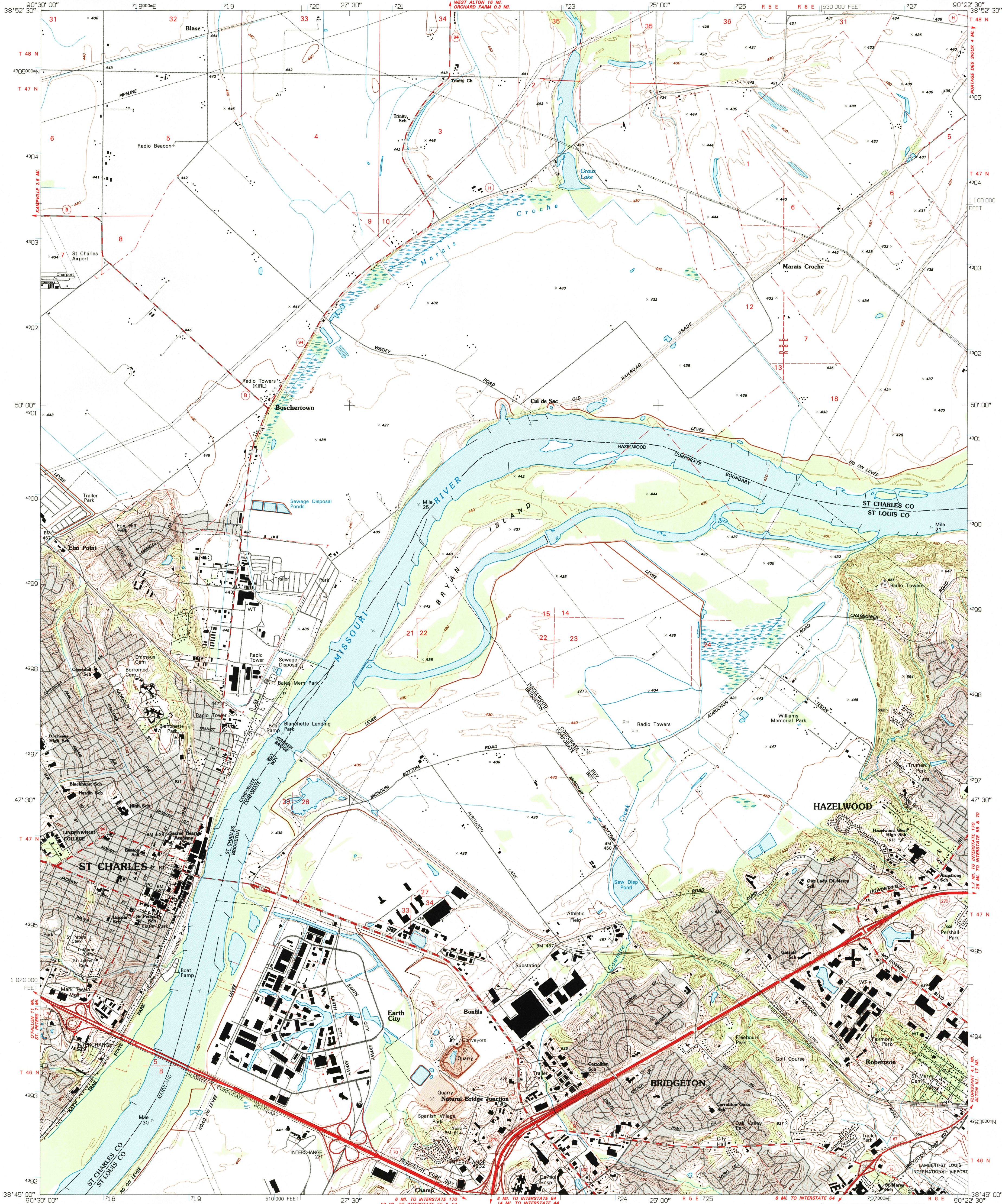
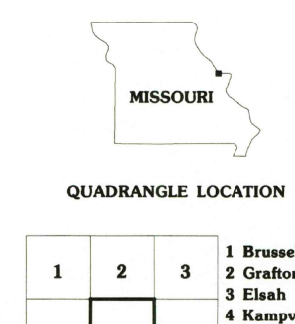
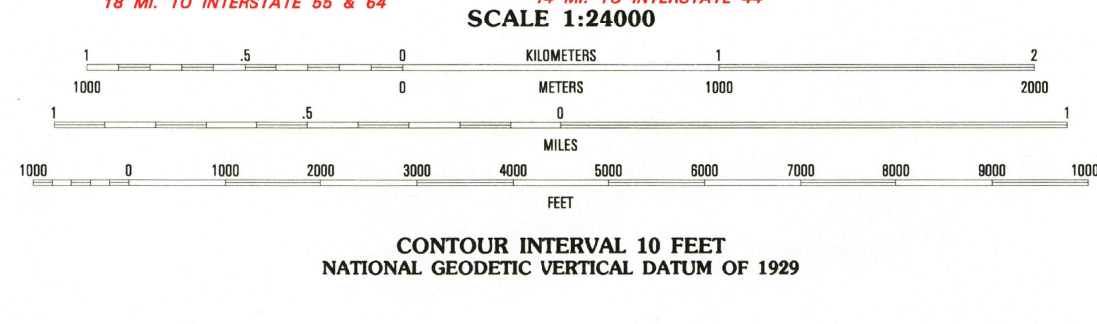
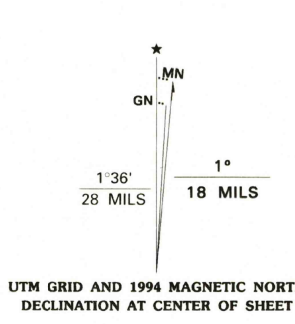


UNITED STATES  
DEPARTMENT OF THE INTERIOR  
GEOLOGICAL SURVEY

ST. CHARLES QUADRANGLE  
MISSOURI  
7.5 MINUTE SERIES (TOPOGRAPHIC)



Produced by the United States Geological Survey  
Compiled by photogrammetric methods from imagery dated 1952  
Field checked 1954. Revised from imagery dated 1990 and  
other sources. Field checked 1993. Map edited 1994  
North American Datum of 1927 (NAD 27). Projection and  
blue 1000-meter ticks: Universal Transverse Mercator, zone 15  
10 000-foot ticks: Missouri coordinate system, east zone  
North American Datum of 1983 (NAD 83) is shown by dashed  
corner ticks. The values of the shift between NAD 27 and NAD 83  
for 7.5-minute intersections are obtainable from National Geodetic  
Survey NADCON software  
There may be private inholdings within the boundaries of  
the National or State reservations shown on this map



Primary highway  
hard surface .....  
Secondary highway  
hard surface .....  
Unimproved road .....  
Light-duty road, hard or  
improved surface .....  
Interstate Route .....  
U.S. Route .....  
State Route .....

1	2	3
4	5	6
7	8	9

USGS AND HISTORICAL  
MAP ARCHIVES  
JUN 19 1995  
REC'D FILE COPY  
ST. CHARLES, MO.  
38090-G4-TF-024  
1994  
DMA 7961 IV SW - SERIES V879

CONTOUR INTERVAL 10 FEET  
NATIONAL GEODETIC VERTICAL DATUM OF 1929  
COMPLIES WITH U.S. GEOLOGICAL SURVEY STANDARDS FOR SPATIAL ACCURACY - CLASS 2  
FOR SALE BY U.S. GEOLOGICAL SURVEY, DENVER, COLORADO 80225, OR RESTON, VIRGINIA 22092  
AND DIVISION OF GEOLOGY AND LAND SURVEY  
MISSOURI DEPARTMENT OF NATURAL RESOURCES, ROLLA, MISSOURI 65401  
A FOLDER DESCRIBING TOPOGRAPHIC MAPS AND SYMBOLS IS AVAILABLE ON REQUEST