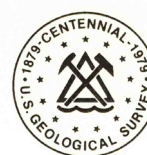


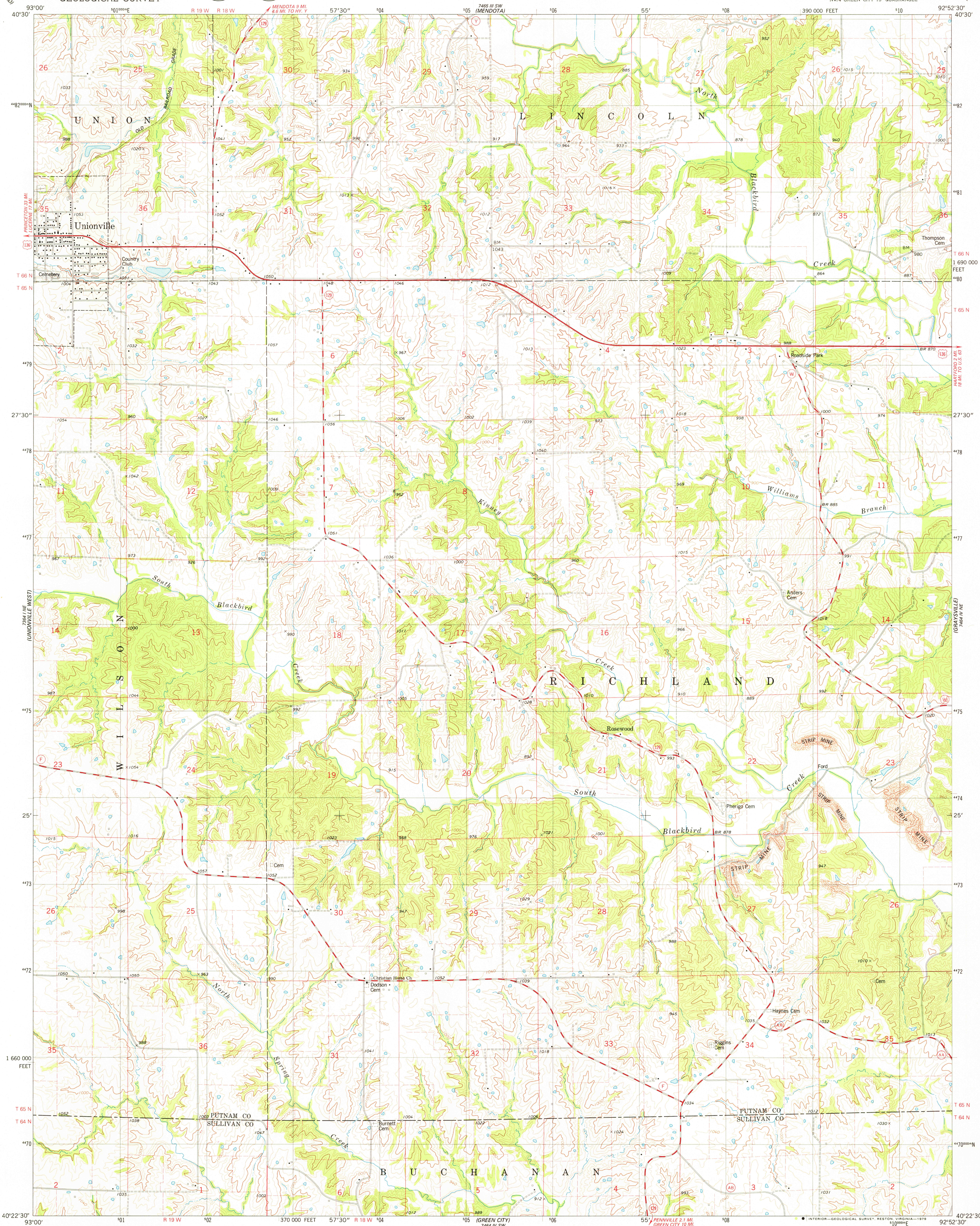
705 1/2 SE
THUNDERHEAD

UNITED STATES
DEPARTMENT OF THE INTERIOR
GEOLOGICAL SURVEY

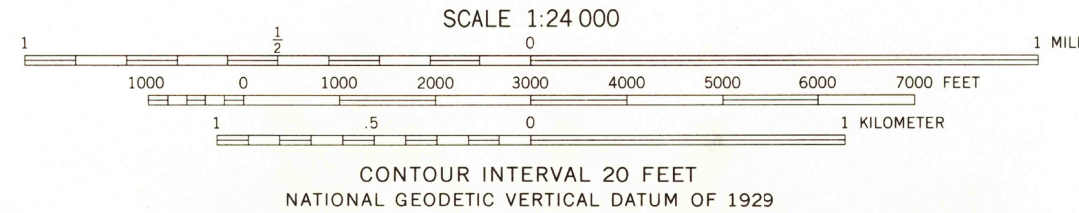
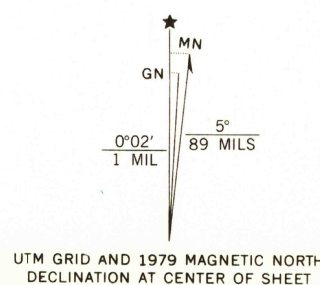


UNIONVILLE EAST QUADRANGLE
MISSOURI
7.5 MINUTE SERIES (TOPOGRAPHIC)
NW/4 GREEN CITY 15' QUADRANGLE

705 3/4 SE
OMAWA



Mapped, edited, and published by the Geological Survey
Control by USGS and NOS/NOAA
Topography by photogrammetric methods from aerial photographs
taken 1974. Field checked 1976. Map edited 1979
Projection and 10,000-foot grid ticks: Missouri coordinate
system, central zone (transverse Mercator)
1000-meter Universal Transverse Mercator grid, zone 15
1927 North American datum
Fine red dashed lines indicate selected fence and field lines where
generally visible on aerial photographs. This information is unchecked



THIS MAP COMPLIES WITH NATIONAL MAP ACCURACY STANDARDS
FOR SALE BY U. S. GEOLOGICAL SURVEY, DENVER, COLORADO 80225, OR RESTON, VIRGINIA 22092,
AND THE DIVISION OF RESEARCH AND TECHNICAL INFORMATION
MISSOURI DEPARTMENT OF NATURAL RESOURCES, ROLLA, MISSOURI 65401
A FOLDER DESCRIBING TOPOGRAPHIC MAPS AND SYMBOLS IS AVAILABLE ON REQUEST



ROAD CLASSIFICATION
Primary highway, hard surface
Secondary highway, hard surface
Unimproved road
Interstate Route
U. S. Route
State Route
Light-duty road, hard or improved surface
Unimproved road
Interstate Route
U. S. Route
State Route

UNIONVILLE EAST, MO.
NW/4 GREEN CITY 15' QUADRANGLE
N4022.5 — W9252.5/7.5

USGS
Historical File
Topographic Division

1979
AMS 7464 IV NW—SERIES V879

NOV 28 1979

2000