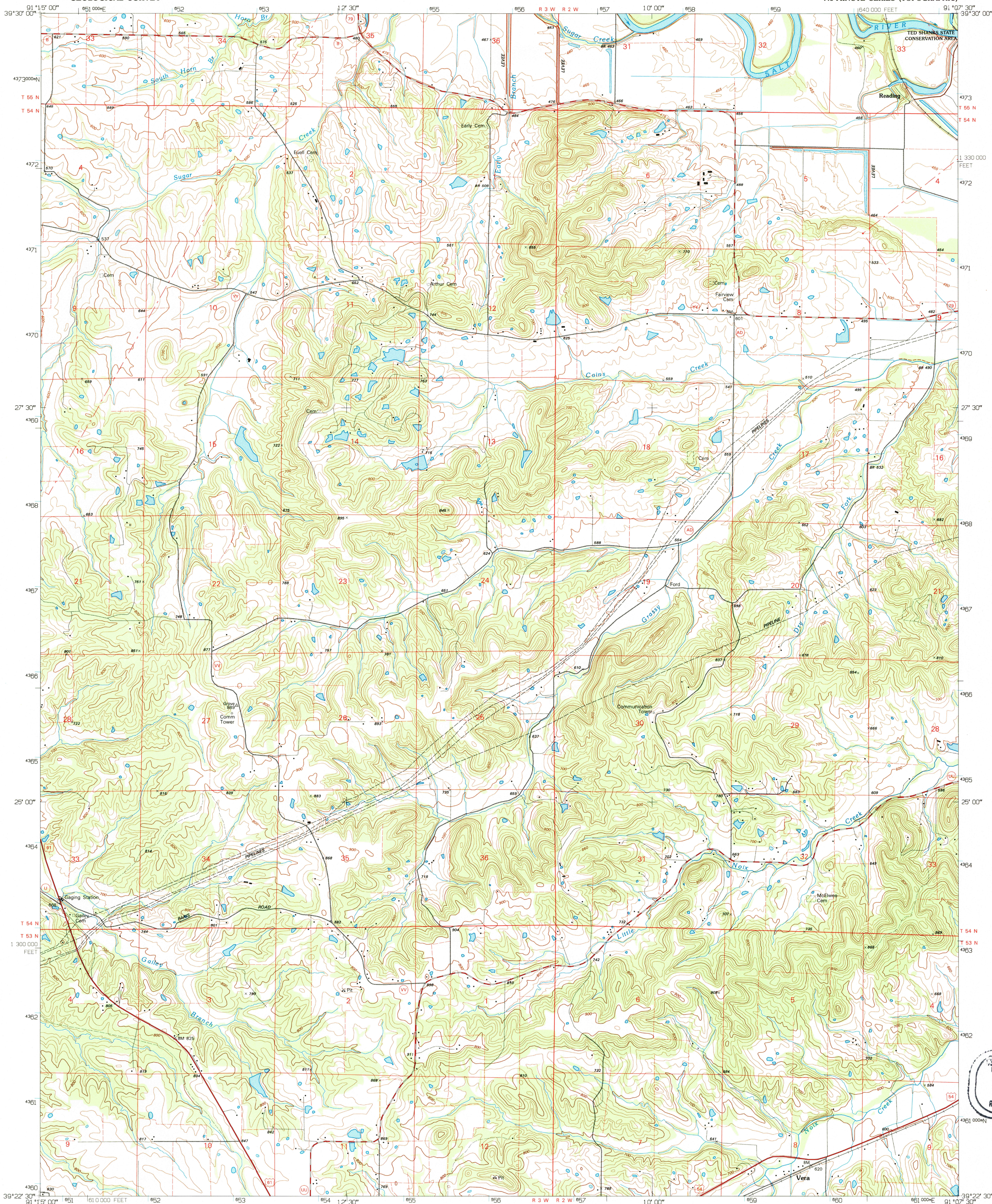
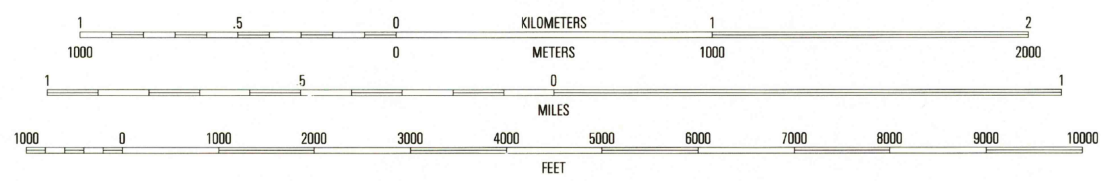
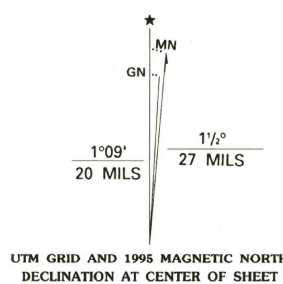


UNITED STATES
DEPARTMENT OF THE INTERIOR
GEOLOGICAL SURVEY

VERA QUADRANGLE
MISSOURI-PIKE CO.
7.5-MINUTE SERIES (TOPOGRAPHIC)

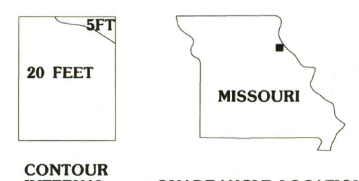


Produced by the United States Geological Survey
Compiled by photogrammetric methods from imagery dated 1972
Field checked 1973. Revised in cooperation with the
U.S. Corps of Engineers from imagery dated 1991. PLSS
and survey control current as of 1973. Map edited 1995
Contours not revised
North American Datum of 1983 (NAD 83). Projection and
blue 1000-meter ticks: Universal Transverse Mercator, zone 15
10 000-foot ticks: Missouri Coordinate System of 1983 (east zone)
North American Datum of 1927 (NAD 27) is shown by dashed
corner ticks. The values of the shift between NAD 83 and NAD 27
for 7.5-minute intersections are obtainable from National Geodetic
Survey NADCON software
There may be private inholdings within the boundaries of
the National or State reservations shown on this map



CONTOUR INTERVAL 5 AND 20 FEET
NATIONAL GEODETIC VERTICAL DATUM OF 1929

THIS MAP COMPLIES WITH NATIONAL MAP ACCURACY STANDARDS
FOR SALE BY U.S. GEOLOGICAL SURVEY, DENVER, COLORADO 80225, OR RESTON, VIRGINIA 22092
AND DIVISION OF GEOLOGY AND LAND SURVEY
MISSOURI DEPARTMENT OF NATURAL RESOURCES, ROLLA, MISSOURI 65401
A FOLDER DESCRIBING TOPOGRAPHIC MAPS AND SYMBOLS IS AVAILABLE ON REQUEST



1	2	3	1. Hannibal SE
4	5	2. Ashburn	
6	7	3. Rockport	
		4. Frankford	
		5. Louisiana	
		6. Carrollville	
		7. Bowling Green	
		8. Cyrene	

ROAD CLASSIFICATION
Primary highway Light-duty road, hard or
hard surface improved surface
Secondary highway
hard surface Unimproved road
Interstate Route U.S. Route State Route

VERA, MO
39091-D2-TF-024

1991

DMA 7762 1 NW-SERIES V879

U.S. AND HISTORICAL
MAP ARCHIVES
JAN 29 1996
REC'D FILE COPY

