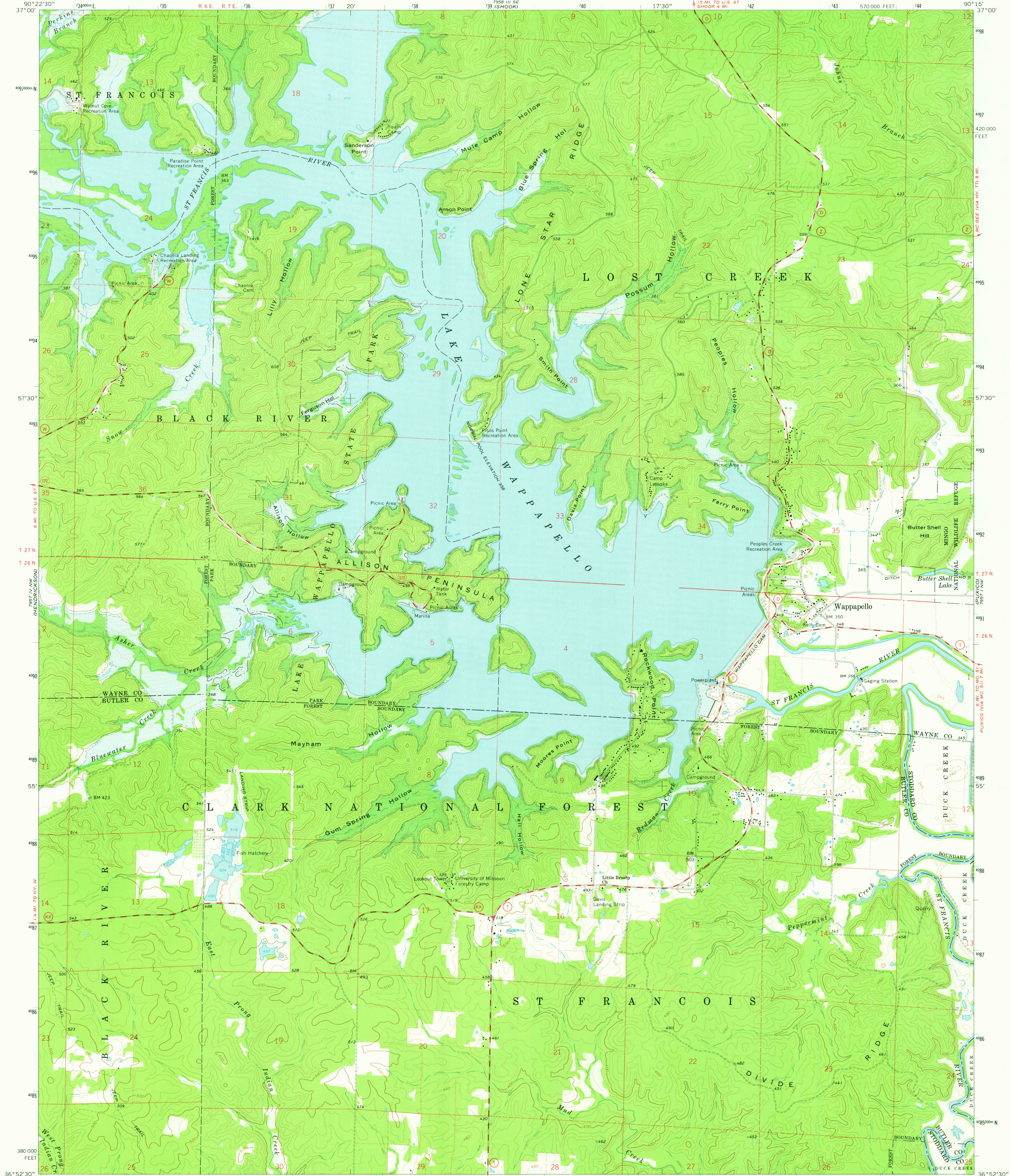
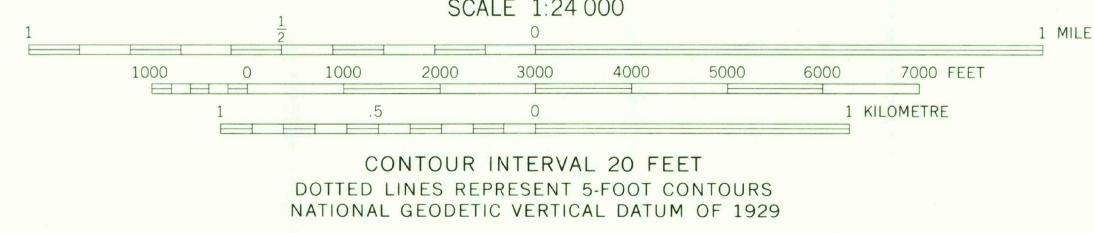
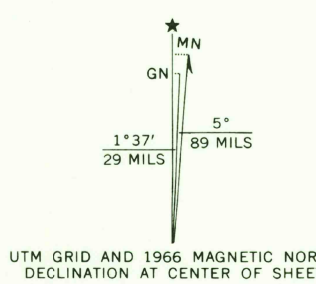


UNITED STATES
DEPARTMENT OF THE INTERIOR
GEOLOGICAL SURVEY

WAPPAPELLO QUADRANGLE
MISSOURI
7.5 MINUTE SERIES (TOPOGRAPHIC)
NE/4 POPLAR BLUFF 15' QUADRANGLE



Mapped, edited, and published by the Geological Survey
Control by USGS and USC&GS
Topography by photogrammetric methods from aerial
photographs taken 1964. Field checked 1966.
Polyconic projection. 1927 North American datum
10,000-foot grid based on Missouri coordinate system, east zone
1000-metre Universal Transverse Mercator grid ticks,
zone 15, shown in blue
Areas covered by dashed light-blue pattern
are subject to controlled inundation
Fine red dashed lines indicate selected fence and field lines where
generally visible on aerial photographs. This information is unchecked



THIS MAP COMPLIES WITH NATIONAL MAP ACCURACY STANDARDS
FOR SALE BY U.S. GEOLOGICAL SURVEY, DENVER, COLORADO 80225, OR RESTON, VIRGINIA 22092
AND BY THE DIVISION OF RESEARCH AND TECHNICAL INFORMATION
MISSOURI DEPARTMENT OF NATURAL RESOURCES, ROLLA, MISSOURI 65401
A FOLDER DESCRIBING TOPOGRAPHIC MAPS AND SYMBOLS IS AVAILABLE ON REQUEST



USGS
Historical File
Topographic Division
1966
AMS 7957 IV NE—SERIES W979

WAPPAPELLO, MO.
NE/4 POPLAR BLUFF 15' QUADRANGLE
N3652.5—W9015/7.5

JUL 1 2 1976